

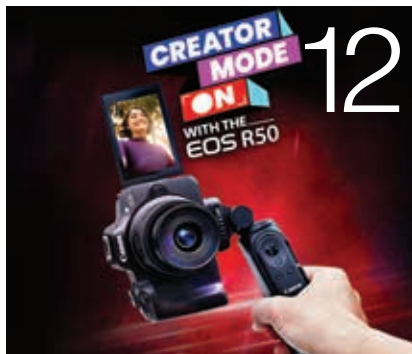
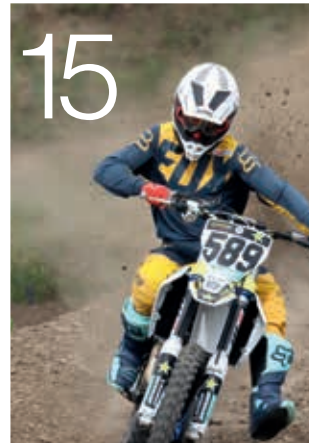
CELEBR8  
the MAGICAL  
INDIAN WEDDING  
WITH EOS R8



PRODUCT RANGE CATALOGUE  
DECEMBER 2023



# CONTENTS



01	TECHNOLOGY: DSLR/MIRRORLESS	03
02	MIRRORLESS CAMERAS	05
03	DSLR CAMERAS	14
04	DIGITAL CAMERAS	17
05	LENSES	22
06	ACCESSORIES	23
07	PROFESSIONAL VIDEO CAMERAS	24
08	CINEMA EOS CAMERAS	27

## CANON DIGITAL TRINITY

Only Canon has a unique advantage of designing all three elements of the camera, i.e. the lens, image sensor and imaging processor. This provides higher quality images in diverse shooting conditions. We call this the 'Canon Digital Trinity.'



## CINEMATIC MOVIE RECORDING

Beyond future proofing your videos, true-to-life realism with 8K<sup>\*1</sup> no-crop video recording, which provides video editors the ultimate freedom to pan across footages or zoom in on any subject without any loss of quality when delivered in FHD or even 4K! With all the additional pixels, it is also possible to crop out anything distracting, reframe the composition or perform post-stabilisation. 8K resolution is 4 times than that of 4K<sup>\*1</sup> and 16 times of FHD<sup>\*1</sup>.

## DUAL PIXEL CMOS AF<sup>\*2</sup>

Dual Pixel CMOS AF is a sensor-based, Phase Detection AF technology. It provides smooth, high performance focus tracking, while recording movies and precise focus during still photo shoot. AF coverage is possible for the entire frame from corner to corner (approx. 100% x 100%)<sup>\*1</sup> when AF points are set to automatic selection. The AF coverage enables a versatile and responsive experience for extreme precision - ideal for shooting with creative composition and framing.



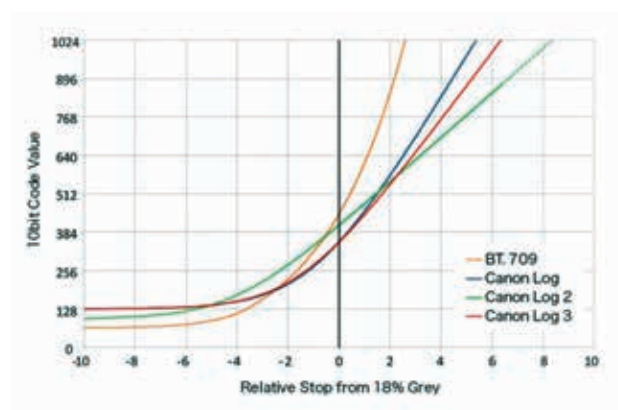
## IN-BODY IMAGE STABILISER<sup>\*3</sup>

5-axis camera-shake blur correction function works in tandem with the lens's image stabiliser, effectively reducing image blur equivalent to up to an 8-stop increase in shutter speed - resulting in reduced shakiness and improved usability of footages even when shooting from challenging angles or when shooting handheld while walking. It also dramatically expands the possibilities of capturing sharp handheld images and videos in low-light conditions.

<sup>\*1</sup> Feature available in select cameras. <sup>\*2</sup> DPAF / DPAF II is available in select cameras. <sup>\*3</sup> In-Body IS available in select cameras. <sup>\*1</sup> 100% AF coverage is available in select cameras. For more information, check the product section of the brochure. All images and effects are simulated. Actual image may vary. To know detailed T&C of EMI, please visit: <https://in.canon/en/consumer/web/emi-cashback-offers>

## Eye Control AF\*1

Experience the power of focusing by sight, which redefines the limits of focusing speed and accuracy. Direct the AF point with your eye by looking at the desired subject through the viewfinder to achieve focus and recommended in situations with multiple subjects as it provides a high degree of flexibility in switching focus quickly from one subject to another.



## Canon Log 3\*1

Canon Log 3 is widely used in the Cinema EOS System as it is less prone to blown-out highlights compared to Canon Log gamma. Rich tones are accurately rendered for high-contrast scenes. In addition, it supports not only the standard BT.709 and BT.2020 colour gamut, but also Cinema Gamut, allowing users to provide visually consistent videos where supporting EOS cameras are used in conjunction with other Cinema EOS cameras.

## THE REVOLUTIONARY RF MOUNT SYSTEM\*4

The new and revolutionary RF Mount System is the latest technological advancement in the EOS universe. Featuring a large 54mm diameter and a high bandwidth 12-pin communication system. The large diameter mount coupled with 20mm short back focus higher quality, wider aperture optics in a relatively compact size. This brings benefits of improved speed and performance that allows more image corrections (DLO or Digital Lens Optimiser) and improved performance of image stabilisation.



## FUTURE OF PHOTO STORAGE^2

A cloud-based storage, the image.canon is a cloud service designed to automatically forward image data in its original format from the camera to the computer, mobile device and supported third-party services. image.canon stores the uploaded original images and videos for 30 days and offers the option of a long-term storage of up to 10GB. This gives photographers the freedom to share images to popular social media sites such as Flickr, Google Drive and YouTube.

\*4 EOS R System, RF Mount System supporter. ^2 Information may be subject to change. For more information, check the product section of the brochure. All images and effects are simulated. Actual image may vary. To know detailed T&C of EMI, please visit: <https://in.canon/en/consumer/web/emi-cashback-offers>



# MIRRORLESS CAMERAS

**6K**

60p  
12-BIT RAW

## CINEMATIC RESOLUTION

Photo Credit: Arjun Mark

Up to  
**30**  
frames  
per second

**BLAZING FAST  
CAPTURES**



**FOLLOWS  
THE EYES**

**IN-BODY  
IMAGE  
STABILISER**

**HIGH STABILITY**

## EOS R3

**In the Heart of Action**

- 6k 60p RAW / 4K 120p / FHD 240p Movie Recording
- 24.1 Megapixel Back Illuminated Full Frame CMOS Sensor
- Up to 195 fps High Speed Burst Shooting
- Eye Control AF
- People / Animal / Vehicle Priority AF
- Low Light AF at EV-7.5
- 1/64000s – Max. Electronic Shutter Speed
- Up to 8-Stops Image Stabilisation

EOS R3 (Body Only)

MRP: ₹537 995.00/U incl. of all taxes

EOS R3 with 512 GB Card & Reader Combo

MRP: ₹628 995.00/U incl. of all taxes

DIGIC  
**X**

Dual Pixel  
CMOS **AF II**

ISO  
102400  
FHD 25600  
4K 25600

 Eye Control

 Multiple Exposure

 GPS

 image.canon

All prices are subject to change. For latest prices, please visit [in.canon](https://in.canon) and visit the relevant product section. EMI options available with Bajaj Finance | HDFC Bank | IDFC First Bank | Pine Labs. EMI finance is at sole discretion of Financier/Bank/Service Provider to customers. EMI available on select models. All images and effects are simulated. Actual image may vary.



Photo Credit: Rohit Dhingra  
Captured on EOS R5  
RF 85mm f/1.2L USM DS

## BORN TO RULE

### EOS R5



- 8K 30p RAW / 4K 120p Movie Recording
- 45.0 Megapixel Full-Frame CMOS Sensor
- Up to 5,940 Selectable AF Points Positions
- Low Light AF at EV-6.0
- ISO 100-51200 (Expandable to ISO 102400)
- Up to 8-Stops Image Stabilisation

Dual Pixel CMOS AF II

DIGIC X

AF Supports  
F22

image.canon

Wi-Fi  
Bluetooth®

ANIMAL  
DETECTION  
AF

20 fps/12 fps  
(Electronic/Mechanical)  
Shutter

EOS R5 (RF 24-105mm f/4L IS USM)  
MRP: ₹ 465 995.00/U incl. of all taxes

EOS R5 (Body Only)  
MRP: ₹ 365 995.00/U incl. of all taxes

EOS R5 with 512 GB Card & Reader Combo  
MRP: ₹ 456 995.00/U incl. of all taxes

All prices are subject to change. For latest prices, please visit [in.canon](https://in.canon) and check out the relevant product section. EMI options available with Bajaj Finance | HDFC Bank | IDFC First Bank | Pine Labs. EMI finance is at sole discretion of Financier/Bank/Service Provider to customers. EMI available on select models. All images and effects are simulated. Actual image may vary.



## MAKE IT [DRAMAGIC] WITH THE EOS R6 Mark II



### EOS R6 Mark II

- 6K 60p Pro Res RAW w/External Recorder
- Full HD 180p w/Canon Log3
- Up to 40 fps Continuous Shooting
- HDR [Moving Subjects]
- Dual Pixel CMOS AF II
- Co-ordinated IS (Lens IS + In-Body IS + Movie Digital IS)
- UVC/UAC Compatibility

EOS R6 Mark II (RF 24-105mm f4 L IS USM)  
MRP: ₹343 995.00/U incl. of all taxes

EOS R6 Mark II (RF 24-105mm f4-7.1 IS STM)  
MRP: ₹271 995.00/U incl. of all taxes

EOS R6 Mark II (Body Only)  
MRP: ₹243 995.00/U incl. of all taxes

24.2 MEGA  
PIXELS  
CMOS

DIGIC  
X

180p  
High Frame Rate  
FULL HD Movie

Upto  
40  
Frames  
per second

Panorama Mode

In-Camera  
Digital Lens  
Optimizer

All prices are subject to change. For latest prices, please visit [in.canon](https://in.canon) and check out the relevant product section. EMI options available with Bajaj Finance | HDFC Bank | IDFC First Bank | Pine Labs. EMI finance is at sole discretion of Financier/Bank/Service Provider to customers. EMI available on select models. All images and effects are simulated. Actual image may vary.



## SHAKE YOUR LEGS. NOT FOOTAGES.

### WITH MOVIE IMAGE STABILIZATION.

# CELEBR8

the FUN

# INDIAN WEDDING

WITH EOS R8



## EOS R8

- 4K 60p Movie Recording w/ 6K Oversampling
- Full HD 180p Slow Motion Movie Recording
- 24.2 Megapixels Full Frame CMOS Sensor
- Canon Log 3 for Color Grading
- Up to 40 fps Continuous Shooting
- Human/Animal/Vehicle Priority AF
- Up to 100% AF Coverage Area
- In-Camera Depth Compositing



EOS R8 (RF24-50mm f/4.5-6.3 IS STM)  
MRP: ₹ 161 995.00/U incl. of all taxes  
EOS R8 (Body)  
MRP: ₹ 142 995.00/U incl. of all taxes

All prices are subject to change. For latest prices, please visit [in.canon](https://in.canon) and check out the relevant product section. EMI options available with Bajaj Finance | HDFC Bank | IDFC First Bank | Pine Labs. EMI finance is at sole discretion of Financier/Bank/Service Provider to customers. EMI available on select models. All images and effects are simulated. Actual image may vary.



# MIRRORLESS CAMERAS



Captured on Canon EOS RP



## EOS RP

### Light Heavyweight

- 26.2 Megapixel Full-Frame CMOS Sensor
- 5.0 fps Continuous Shooting
- ISO 100-40000 (Expandable to ISO 102400)
- Up to 4,779 Selectable AF Point Positions
- Low Light AF at EV-5
- 4K 24p / Full HD 60p Movie Recording

**Dual Pixel AF**  
CMOS

**26.2** MEGA  
PIXELS  
CMOS

**4K**  
EOS Movie  
4K\* FULL FD

**DIGIC**  
8

**EOS**  
Digital Lens  
Optimizer

**Wi-Fi**  
Bluetooth®

EOS RP (Body)

MRP: ₹94 995.00/U incl. of all taxes

All prices are subject to change. For latest prices, please visit [in.canon](https://in.canon) and check out the relevant product section. More range of RF Lenses available. For more details, visit [in.canon](https://in.canon). EMI options available with Bajaj Finance | HDFC Bank | IDFC First Bank | Pine Labs. EMI finance is at sole discretion of Financier/Bank/Service Provider to customer. EMI available on select models.

To know detailed T&C of EMI, please visit: <https://in.canon/en/consumer/web/emi-cashback-offers>. All images and effects are simulated. Actual image may vary.



# TAKE OFF

## EXPLORE NEW FLIGHTS OF PASSION

### EOS R7

#### Take Off



- 32.5 Megapixel APS-C CMOS Sensor
- 4K 60p / Full HD 120p Continuous Movie Recording
- Up to 30 fps Continuous Shooting with AF/AE Tracking
- Dual SD Card Slots
- Canon Log 3 for Colour Grading
- Up to 8-Stops Image Stabilisation
- Multi-function Accessory Shoe



Dual Pixel  
CMOS AF II

ISO 100-32000  
[Expandable to  
ISO 51200]



RF-S Lens  
Compatible

EOS R7 (RF-S18-150mm f3.5-6.3 IS STM)

MRP: ₹ 175 995.00/U incl. of all taxes

EOS R7 (Body)

MRP: ₹ 138 995.00/U incl. of all taxes

All prices are subject to change. For latest prices, please visit [in.canon](https://in.canon) and check out the relevant product section. EMI options available with Bajaj Finance | HDFC Bank | IDFC First Bank | Pine Labs. EMI finance is at sole discretion of Financier/Bank/Service Provider to customers. EMI available on select models. To know detailed T&C of EMI, please visit: <https://in.canon/en/consumer/web/emi-cashback-offers>. All images and effects are simulated. Actual image may vary.



## FIND YOUR *Story*



### EOS R10

Find Your Own Story

- 24.2 Megapixel APS-C CMOS Sensor
- 4K 60p / Full HD 120p Continuous Movie Recording
- Up to 23 fps Continuous Shooting with AF/AE Tracking
- In-Camera Panorama & Depth Compositing
- Human/Animal/Vehicle Priority AF
- Multi-function Accessory Shoe
- Light & Compact Body Design



Dual Pixel CMOS AF II

ISO 100-32000  
[Expandable to  
ISO 51200]



RF-S Lens  
Compatible

EOS R10 (RF-S18-150mm f3.5-6.3 IS STM)

MRP: ₹ 119 995.00/U incl. of all taxes

EOS R10 (RF-S18-45mm f4.5-6.3 IS STM)

MRP: ₹ 92 995.00/U incl. of all taxes

EOS R10 (Body)

MRP: ₹ 82 995.00/U incl. of all taxes

All prices are subject to change. For latest prices, please visit [in.canon](https://in.canon/en/consumer/web/emi-cashback-offers) and check out the relevant product section. EMI options available with Bajaj Finance | HDFC Bank | IDFC First Bank | Pine Labs. EMI finance is at sole discretion of Financier/Bank/Service Provider to customers. EMI available on select models. To know detailed T&C of EMI, please visit: <https://in.canon/en/consumer/web/emi-cashback-offers>. All images and effects are simulated. Actual image may vary.



# CREATOR MODE

## ON WITH THE EOS R50



## EOS R50

### Creator Mode On

- 4K 30p / Full HD 120p Movie Recording
- Movie IS/Movie for Close-up Demos mode
- Focus Breathing Correction
- 24.2 Megapixel APS-C CMOS Sensor
- Up to 15 fps Continuous Shooting
- Human/Animal/Vehicle Priority AF
- Up to 100% AF Coverage Area
- Light & Compact body design



EOS R50

(RF-S18-45mm f/4.5-6.3 IS STM + RF-S55-210mm f/5-7.1 IS STM)

MRP: ₹ 97,995.00/U incl. of all taxes

EOS R50 (RF-S18-45mm f/4.5-6.3 IS STM)

MRP: ₹ 75,995.00/U incl. of all taxes

All prices are subject to change. For latest prices, please visit [in.canon](https://in.canon) and check out the relevant product section. EMI options available with Bajaj Finance | HDFC Bank | IDFC First Bank | Pine Labs. EMI finance is at sole discretion of Financier/Bank/Service Provider to customers. EMI available on select models. All images and effects are simulated. Actual image may vary.



Incoming Call

Sam the Scammer



YOUR PHONE  
HAS OTHER JOBS  
**SOME THINGS  
ARE BEST LEFT  
TO CANON**

## EOS R100

A Mirrorless for All

- 24.1 Megapixel APS-C CMOS Sensor
- 4K 25p/FHD 60p Movie Recording
- HD 120p High Frame Rate Video
- Vertical Video Recording
- Hybrid Auto
- 3.5mm External Microphone Port

Dual Pixel AF



EOS R100 (RF-S18-45mm f/4.5-6.3 IS STM)

MRP: ₹ 64 995.00/U incl. of all taxes

All prices are subject to change. For latest prices, please visit [in.canon](https://in.canon) and check out the relevant product section. EMI options available with Bajaj Finance | HDFC Bank | IDFC First Bank | Pine Labs. EMI finance is at sole discretion of Financier/Bank/Service Provider to customers. EMI available on select models. All images and effects are simulated. Actual image may vary.



# DSLR CAMERAS

Captured on EOS 5D Mark IV, EF 14mm f/2.8 L II USM

PROMO OFFER\* 512GB CFEXPRESS CARD & READER



## EOS-1D X Mark III

### Masters, Meet The Master

- 20.1 Megapixel Full-Frame CMOS Sensor
- ISO 100-102400 (Expandable to ISO 819200)
- 191 Points AF (155 Points Cross Type)
- 16 fps (Mechanical Shutter)
- 20 fps (Live View/Electronic Shutter)
- 4,00,000 Pixels RGB + IR Metering Sensor
- 4K 60p / FHD 120p Movie Recording

EOS-1D X Mark III (Body)  
MRP: ₹ 654 995.00/U incl. of all taxes



## EOS 5D Mark IV

### The Power of 5

- 30.4 Megapixel Full-Frame CMOS Sensor
- ISO 100-32000 (Expandable to ISO 102400)
- 61 Points AF (41 Points Cross Type)
- 1,50,000 Pixels RGB + IR Metering Sensor
- 4K 30p / Full HD 60p Movie Recording
- Built-in Wi-Fi / NFC / GPS

EOS 5D Mark IV  
(EF 24-105mm f/4L IS II USM Lens)  
MRP: ₹ 337 995.00/U incl. of all taxes



\*Offer valid till stocks last.

All prices are subject to change. For latest prices, please visit in.canon and check out the relevant product section. EMI options available with Bajaj Finance | HDFC Bank | IDFC First Bank | Pine Labs. EMI finance is at sole discretion of Financier/Bank/Service Provider to customers. EMI available on select models. To know detailed T&C of EMI, please visit: <https://in.canon/en/consumer/web/emi-cashback-offers>. All images and effects are simulated. Actual image may vary.



# DSLR CAMERAS



Captured on EOS 90D, EF-S 18-135mm f/3.5-5.6 IS STM



## EOS 6D<sup>II</sup> Mark II

### Sense of Genius

- 26.2 Megapixel Full-Frame CMOS Sensor
- ISO 100-40000 (Expandable to ISO 102400)
- 45 AF Points (All Cross Type)
- 6.5 fps Continuous Shooting
- 7,560 Pixels RGB + IR Metering Sensor
- Full HD 60p Movie Recording



EOS 6D Mark II  
(EF 24-105mm f/4L IS II USM Lens)  
MRP: ₹211 995.00/U incl. of all taxes



## EOS 90D

### Focus x Speed

- 32.5 Megapixel APS-C CMOS Sensor
- ISO 100-25600 (Expandable to ISO 51200)
- 45 AF Points (All Cross Type)
- 10.0 fps Continuous Shooting
- 2,20,000 Pixels RGB + IR Metering Sensor
- 4K 30p / Full HD 120p Movie Recording



EOS 90D (EF-S18-135mm IS USM Lens)  
MRP: ₹144 995.00/U incl. of all taxes  
EOS 90D (Body)  
MRP: ₹113 495.00/U incl. of all taxes

All prices are subject to change. For latest prices, please visit [in.canon.com](https://in.canon.com) and check out the relevant product section. EMI options available with Bajaj Finance | HDFC Bank | IDFC First Bank | Pine Labs. EMI finance is at sole discretion of Financier/Bank/Service Provider to customers. EMI available on select models. To know detailed T&C of EMI, please visit: <https://in.canon.com/en/consumer/web/emi-cashback-offers>. All images and effects are simulated. Actual image may vary.





Captured on EOS 200D II, EF-S 18-55 f/4-5.6 IS STM



## EOS 200D II

### Do Great with Canon

- 24.1 Megapixel APS-C CMOS Sensor
- ISO 100-25600 (Expandable to ISO 51200)
- 9-Point AF (Centre Cross Type)
- 5.0 fps Continuous Shooting
- 4K 24p / Full HD 60p Movie Recording
- Creative Assist Function

**Dual Pixel AF**  
CMOS

**DiGIC 8**

**Smooth Skin**

**Eye Detection AF**

**Wi-Fi Bluetooth®**

**Creative Assist**

EOS 200D II (EF-S18-55mm f/4-5.6 IS STM Lens)  
MRP: ₹ 68 995.00/U incl. of all taxes



## EOS 1500D

### Make Every Trip an EOS Trip

- 24.1 Megapixel APS-C CMOS Sensor
- ISO 100-6400 (Expandable to ISO 12800)
- 9-Point AF (Centre Cross Type)
- 3.0 fps Continuous Shooting
- Full HD 30p Movie Recording
- Built-in Creative Filters

**24.1 MEGA PIXELS**  
CMOS

**DiGIC 4+**

**EOS Movie FULL HD**

**Creative Filters**

**Wi-Fi / NFC**

EOS 1500D (EF-S18-55mm f/3.5-5.6 IS II Lens)  
MRP: ₹ 47 995.00/U incl. of all taxes

All prices are subject to change. For latest prices, please visit [in.canon](https://in.canon/en/consumer/web/emi-cashback-offers) and check out the relevant product section. EMI options available with Bajaj Finance | HDFC Bank | IDFC First Bank | Pine Labs. EMI finance is at sole discretion of Financier/Bank/Service Provider to customers. EMI available on select models. To know detailed T&C of EMI, please visit: <https://in.canon/en/consumer/web/emi-cashback-offers>. All images and effects are simulated. Actual image may vary.



# DIGITAL CAMERAS



YOUR PHONE  
HAS OTHER JOBS

**SOME THINGS  
ARE BEST LEFT  
TO CANON**

***PowerShot V10***

Vlog your way

- Ultra Compact Design
- 19mm f/2.8 Wide Lens
- 4K + Full HD Movie Recording
- Smooth Skin Movie Recording
- Large Stereo Microphone
- Plug & Play Webcam

**15.2** MEGA PIXELS

**1.0** type

**2.0** LCD

**DIGIC X**

**BUILT-IN**

**STAND**

**Wi-Fi**

PowerShot V10

MRP: ₹39 995.00/U incl. of all taxes

All prices are subject to change. For latest prices, please visit [in.canon](https://in.canon) and check out the relevant product section. EMI options available with Bajaj Finance | HDFC Bank | IDFC First Bank | Pine Labs. EMI finance is at sole discretion of Financier/Bank/Service Provider to customers. EMI available on select models. All images and effects are simulated. Actual image may vary.



# DIGITAL CAMERAS

## PowerShot SX70 HS



### Rev up Your Photography Skills with OLED EVF and 65x Zoom

- 20.3 Megapixel HS CMOS Sensor
- 65x Optical Zoom
- Zoom Framing Assist
- Intelligent IS
- Manual Movie Mode
- 4K 30p / Full HD 60p Movie Recording

20.3 MEGA PIXELS CMOS | 4K Frame Grab | 130x ZoomPlus | DIGIC 8 | Wi-Fi Bluetooth

MRP: ₹ 55 995.00/U incl. of all taxes

## PowerShot SX740 HS



### Sleek Camera with 40x Super Zoom for Capturing Moments in Life and Travel

- 20.3 Megapixel 1/2.3-Type HS CMOS Sensor
- 40x Optical Zoom
- Zoom Framing Assist
- Feature Assistant
- Dual Sensing IS
- 4K 30p / Full HD 60p Movie Recording

20.3 MEGA PIXELS CMOS | 80x ZoomPlus | 4K Frame Grab | DIGIC 8 | Wi-Fi Bluetooth | 4K Time-Lapse Movie

MRP: ₹ 38 995.00/U incl. of all taxes

## IXUS 285



### Pocket-sized Picture Perfection

- 20.2 Megapixel HS CMOS Sensor
- 12x Optical Zoom
- Hybrid Auto
- Intelligent IS
- Full HD Movie Recording

20.2 MEGA PIXELS | DIGIC 4+ | INTELLIGENT IS | Wi-Fi / NFC

MRP: ₹ 24 995.00/U incl. of all taxes

All images and effects are simulated. Actual images may vary. All prices are subject to change. For latest prices, please visit [in.canon](https://in.canon) and check out the relevant product section. EMI options available with Bajaj Finance | HDFC Bank | IDFC First Bank | Pine Labs. EMI finance is at sole discretion of Financier/Bank/Service Provider to customers. EMI available on select models. To know detailed T&C of EMI, please visit: <https://in.canon/en/consumer/web/emi-cashback-offers>



# DIGITAL CAMERAS

## PowerShot G7X Mark III



### The Next Step-up for Your Everyday Photography

- 20.1 Megapixel 1.0 Type Stacked CMOS Sensor
- ISO 125-12800 (Expandable to ISO 25600)
- 4.2x Optical Zoom
- RAW Shooting
- 4K 30p / Full HD 120p Movie Recording
- Supports Live Streaming\*<sup>1</sup>



MRP: ₹ 62 995.00/U incl. of all taxes

## PowerShot G7X Mark II



### Next Generational Image Quality and Power

- 20.1 Megapixel 1.0 Type CMOS Sensor
- ISO 125-12800
- 4.2x Optical Zoom
- RAW Shooting
- Custom Control Ring
- Full HD 60p Movie Recording



MRP: ₹ 55 995.00/U incl. of all taxes

# COMPACT PHOTO PRINTERS



## SELPHY CP1500

Mobile Wi-Fi Printer with a variety of print functions. A compact, portable Wi-Fi Printer that prints quality photos directly from your camera or smartphone anywhere, anytime, at any occasion.

MRP: ₹ 11 995.00/U incl. of all taxes

RP 108(IN)

RP108(IN)  
Consumables for  
Selphy CP1000  
Selphy CP1300  
Selphy CP1500



MRP: ₹ 1 490.00/U incl. of all taxes



Dye-Sub

USB  
Printing

Ultra Compact Design



## SELPHY CP1000

Boasts superior mobility and high-quality print outs. Selphy unique dye-sublimation printing technology ensures that photographs last for 100 years.

MRP: ₹ 7 495.00/U incl. of all taxes

KP 108(IN)

KP108(IN)  
Consumables for  
Selphy CP1000  
Selphy CP1300  
Selphy CP1500



MRP: ₹ 1 490.00/U incl. of all taxes

\*<sup>1</sup>To know the rules and restriction on live streaming functionality, please visit <https://bit.ly/2LHgRXS>. All images and effects are simulated. Actual images may vary. All prices are subject to change. For latest prices, please visit [in.canon](https://in.canon) and check out the relevant product section. EMI options available with Bajaj Finance | HDFC Bank | IDFC First Bank | Pine Labs. EMI finance is at sole discretion of Financier/Bank/Service Provider to customers. EMI available on select models. To know detailed T&C of EMI, please visit: <https://in.canon/en/consumer/web/emi-cashback-offers>



# LENSES

Photo Credit: Nitin Arora  
Captured on EOS R6, RF 24-70 f/2.8L IS USM



Scan the QR Code  
for RF Lenses

## RF LENSES

A New Generation of Lenses for EOS R System



**New**

RF10-20mm f/4L IS STM  
MRP: ₹244 495.00/U incl. of all taxes



RF14-35mm f/4L IS USM  
MRP: ₹158 995.00/U incl. of all taxes



RF15-35mm f/2.8L IS USM  
MRP: ₹225 995.00/U incl. of all taxes



RF15-30mm f/4.5-6.3 IS STM  
MRP: ₹52 495.00/U incl. of all taxes



RF16mm f/2.8 STM  
MRP: ₹27 995.00/U incl. of all taxes



RF24-50mm f/4.5-6.3 IS STM  
MRP: ₹28 995.00/U incl. of all taxes



RF24mm f/1.8 MACRO IS STM  
MRP: ₹58 495.00/U incl. of all taxes



RF28mm f/2.8 STM  
MRP: ₹29 595.00/U incl. of all taxes



RF24-70mm f/2.8L IS USM  
MRP: ₹225 995.00/U incl. of all taxes



**New**

RF24-105mm f/2.8L IS USM Z  
MRP: ₹295 495.00/U incl. of all taxes



RF24-105mm F4-7.1 IS STM  
MRP: ₹37 995.00/U incl. of all taxes



RF24-105mm f/4L IS USM  
MRP: ₹118 995.00/U incl. of all taxes

All prices are subject to change. For latest prices, please visit [in.canon](https://in.canon) and check out the relevant product section. More range of RF Lenses available. For more details, visit [in.canon](https://in.canon). EMI options available with Bajaj Finance | HDFC Bank | IDFC First Bank | Pine Labs. EMI finance is at sole discretion of Financier/Bank/Service Provider to customers.

EMI available on select models.

To know detailed T&C of EMI, please visit: <https://in.canon/en/consumer/web/emi-cashback-offers>. All images and effects are simulated. Actual image may vary.



# LENSES



RF24-240mm f/4-6.3 IS USM  
MRP: ₹83 495.00/U incl. of all taxes



RF28-70mm f/2L USM  
MRP: ₹291 995.00/U incl. of all taxes



RF35mm f/1.8 MACRO IS STM  
MRP: ₹45 995.00/U incl. of all taxes



RF50mm f/1.8 STM  
MRP: ₹18 995.00/U incl. of all taxes



RF50mm f/1.2L USM  
MRP: ₹228 995.00/U incl. of all taxes



RF70-200mm f/4L IS USM  
MRP: ₹169 995.00/U incl. of all taxes



RF70-200mm f/2.8L IS USM  
MRP: ₹262 995.00/U incl. of all taxes



RF85mm f/2 Macro IS STM  
MRP: ₹54 495.00/U incl. of all taxes



RF85mm f/1.2L USM  
MRP: ₹262 995.00/U incl. of all taxes



RF85mm f/1.2L USM DS  
MRP: ₹299 995.00/U incl. of all taxes



RF100-400mm f/5.6-8 IS USM  
MRP: ₹60 495.00/U incl. of all taxes



RF100mm f/2.8L Macro IS USM  
MRP: ₹136 995.00/U incl. of all taxes



RF100-500mm f/4.5-7.1L IS USM  
MRP: ₹277 995.00/U incl. of all taxes



RF135mm f/1.8 IS USM  
MRP: ₹219 995.00/U incl. of all taxes



RF600mm f/11 IS STM  
MRP: ₹76 495.00/U incl. of all taxes



RF800mm f/11 IS STM  
MRP: ₹96 495.00/U incl. of all taxes



RF100-300mm f/2.8L IS USM  
MRP: ₹919 995.00/U incl. of all taxes



**New**  
RF200-800mm f/6.3-9 IS USM  
MRP: ₹196 595.00/U incl. of all taxes



RF400mm f/2.8L IS USM  
MRP: ₹1 169 995.00/U incl. of all taxes



RF600mm f/4L IS USM  
MRP: ₹1 249 995.00/U incl. of all taxes



RF800mm f/5.6L IS USM  
MRP: ₹1 599 995.00/U incl. of all taxes



RF1200mm f/8L IS USM  
MRP: ₹1 899 995.00/U incl. of all taxes

## POWER ZOOM ADAPTER



**New**  
Power Zoom Adapter PZ E2  
MRP: ₹92 995.00/U incl. of all taxes

Compatible with RF24-105mm f/2.8L IS USM Z

## RF-S LENSES



**New**  
RF-S10-18mm f/4.5-6.3 IS STM  
MRP: ₹33 595.00/U incl. of all taxes



RF-S18-45mm f/4.5-6.3 IS STM  
MRP: ₹28 995.00/U incl. of all taxes



RF-S18-150mm f/3.5-6.3 IS STM  
MRP: ₹45 995.00/U incl. of all taxes



RF-S55-210mm f/5-7.1 IS STM  
MRP: ₹31 995.00/U incl. of all taxes

Designed specially for APS-C RF Mount Cameras but overall compatible with EOS R Series cameras

## VR LENS



RF5.2mm f/2.8L Dual Fisheye  
MRP: ₹179 995.00/U incl. of all taxes

Compatible with EOS R6 MII, R5 and EOS R5 C

## EXTENDERS (Tele Converter)



Extender RF1.4x (Tele Converter)  
MRP: ₹46 995.00/U incl. of all taxes



Extender RF2x (Tele Converter)  
MRP: ₹55 995.00/U incl. of all taxes

All prices are subject to change. For latest prices, please visit in.canon and checkout the relevant product section. More range of RF Lenses available. For more details, visit in.canon. EMI options available with Bajaj Finance | HDFC Bank | IDFC First Bank | Pine Labs. EMI finance is at sole discretion of Financier/Bank/Service Provider to customers. EMI available on select models. To know detailed T&C of EMI, please visit: <https://in.canon/en/consumer/web/emi-cashback-offers>. All images and effects are simulated. Actual image may vary.



# LENSES

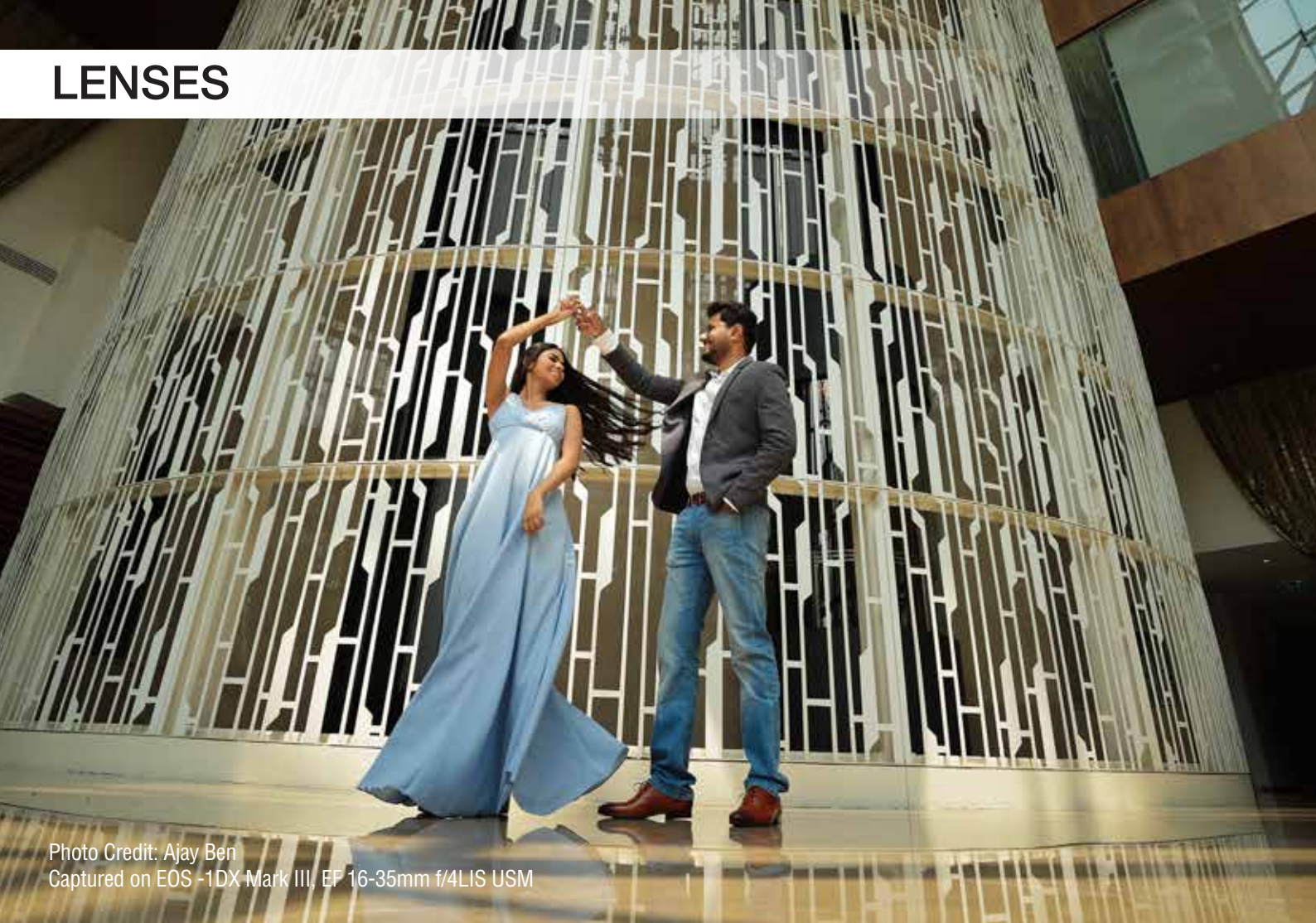


Photo Credit: Ajay Ben  
Captured on EOS -1DX Mark III, EF 16-35mm f/4LIS USM



EF16-35mm f/2.8L III USM  
MRP: ₹ 208 995.00/U incl. of all taxes



EF24-70mm f/2.8L II USM  
MRP: ₹ 184 995.00/U incl. of all taxes



EF50mm f/1.4 USM  
MRP: ₹ 37 995.00/U incl. of all taxes



EF70-200mm f/2.8L IS III USM  
MRP: ₹ 208 995.00/U incl. of all taxes



EF85mm f/1.4L IS USM  
MRP: ₹ 164 995.00/U incl. of all taxes



EF100mm f/2.8L Macro IS USM  
MRP: ₹ 84 995.00/U incl. of all taxes

## MOUNT ADAPTERS

Compatibility for EF & EF-S Lenses with EOS R Series Camera



Mount Adapter  
EF-EOS R  
MRP: ₹ 7 995.00/U incl. of all taxes



Control Ring Mount Adapter  
EF-EOS R  
MRP: ₹ 15 995.00/U incl. of all taxes

More range of EF Lenses available. For more details, visit [in.canon](https://in.canon/en/consumer/web/emi-cashback-offers). All prices are subject to change. For latest prices, please visit [in.canon](https://in.canon/en/consumer/web/emi-cashback-offers) and check out the relevant product section. All images and effects are simulated. Actual images may vary. EMI options available with Bajaj Finance | HDFC Bank | IDFC First Bank | Pine Labs. EMI finance is at sole discretion of Financier/Bank/Service Provider to customers. EMI available on select models. To know detailed T&C of EMI, please visit: <https://in.canon/en/consumer/web/emi-cashback-offers>



## BATTERY & BATTERY CHARGER COMPATIBILITY

Canon original Batteries and Battery Chargers give you top-of-the-line performance and Battery life to keep shooting all day. Additionally, our Batteries are built of quality material that give more charge cycles and the best performance to your equipment.

<b>BATTERY</b> LP-E6NH MRP: ₹7 695.00/U incl. of all taxes  <b>CHARGER</b> LC-E6E MRP: ₹3 295.00/U incl. of all taxes  EOS R5 EOS R5 C EOS R6 Mark II EOS R6 EOS R EOS R7 EOS 5D Mark IV EOS 6D Mark II EOS 90D EOS 80D	<b>BATTERY</b> LP-E12 MRP: ₹2 915.00/U incl. of all taxes  <b>CHARGER</b> LC-E12E MRP: ₹2 970.00/U incl. of all taxes  EOS M50 Mark II EOS M200 PowerShot SX70 HS	<b>BATTERY</b> LP-E10 MRP: ₹2 395.00/U incl. of all taxes  <b>CHARGER</b> LC-E10E MRP: ₹2 490.00/U incl. of all taxes  EOS 1500D EOS 3000D	<b>BATTERY</b> LP-E17 MRP: ₹3 095.00/U incl. of all taxes  <b>CHARGER</b> LC-E17E MRP: ₹3 495.00/U incl. of all taxes  EOS R8 EOS RP EOS R50 EOS R10 EOS M6 Mark II EOS 200D II EOS R100
<b>BATTERY</b> LP-E19 MRP: ₹12 495.00/U incl. of all taxes  <b>CHARGER</b> LC-E19 MRP: ₹28 995.00/U incl. of all taxes  EOS-1D X Mark III EOS R3	<b>BATTERY</b> NB-6LH MRP: ₹2 095.00/U incl. of all taxes  <b>CHARGER</b> CB-2LYE MRP: ₹3495.00/U incl. of all taxes  SX Series (610 / 710 / 530 / 540)	<b>BATTERY</b> NB-13L MRP: ₹2 555.00/U incl. of all taxes  <b>CHARGER</b> CB-2LHE MRP: ₹3 495.00/U incl. of all taxes  PowerShot G Series (5X / 5X Mark II / 7X / 9X / 1X Mark III / 9X MarkII / 7X MarkII / 7X MarkIII  PowerShot SX Series (620 / 720 / 730 / 740)	<b>BATTERY</b> NB-11LH MRP: ₹2 095.00/U incl. of all taxes  <b>CHARGER</b> CB-2LFE MRP: ₹3 495.00/U incl. of all taxes  IXUS Series (265 / 175 / 180 / 185 / 190 / 285)  PowerShot SX Series (410/ 420 / 430)



## BATTERY GRIP WIRELESS FILE TRANSFER

Canon original Battery Grips give unmatched performance and the same level of weather sealing as the body they are designed for.

<b>BG-E22</b> Compatible with: EOS R MRP: ₹ 23 895.00/U incl. of all taxes	<b>BG-R10</b> Compatible with: EOS R5 / EOS R6 & EOS R6 Mark II MRP: ₹ 22 495.00/U incl. of all taxes	<b>BG-E21</b> Compatible with: EOS 6D Mark II Series MRP: ₹ 11 995.00/U incl. of all taxes
<b>BG-E14</b> Compatible with: EOS 80D Series MRP: ₹ 10 995.00/U incl. of all taxes	<b>WFT-R10</b> Compatible with: EOS R5 & EOS R5 C MRP: ₹ 79 995.00/U incl. of all taxes	

Other range also available in EOS lenses and accessories. For more details, visit [in.canon](https://in.canon/en/consumer/web/emi-cashback-offers). All prices are subject to change. For latest prices, please visit [in.canon](https://in.canon/en/consumer/web/emi-cashback-offers) and check out the relevant product section. All images and effects are simulated. Actual images may vary. EMI options available with Bajaj Finance | HDFC Bank | IDFC First Bank | Pine Labs. EMI finance is at sole discretion of Financier/Bank/Service Provider to customers. EMI available on select models. To know detailed T&C of EMI, please visit: <https://in.canon/en/consumer/web/emi-cashback-offers>



# SHOOT STREAM SHARE



**XA65/XA60**

**XA75/XA70**

# PROFESSIONAL VIDEO CAMERAS



4K  
UHD

Special Offer\*  
on XA75/XA70  
Battery+Charger+Camera Bag

## XA75/XA70

- 4K UHD 25P & Advance Full HD Quality
- 1.0 Type CMOS Sensor
- 4K Supporting 15x Optical Zoom Lens
- XF-AVC & MP4 Recording Formats
- 25.5 mm Ultra-Wide-angle view
- Dual Pixel CMOS AF & Touch Tracking
- High Brightness/High Definition 8.9 cm LCD
- 9 Blade IRIS Diaphragm for beautiful bokeh
- 5 AXIS Image Stabilizer
- Type C USB for Video Class (UVC) Support
- Accessory Shoe, HDMI Terminal, Dual Type-C port & 3G SDI terminal (only in XA75)

XA75 MRP: ₹ 210 995.00/U incl. of all taxes

XA70 MRP: ₹ 184 995.00/U incl. of all taxes



4K  
UHD

Special Offer\*  
on XA65/XA60  
Battery+Charger+Camera Bag

## XA65/XA60

- 4K UHD 25P
- 4K Compatible 20x Optical Zoom Lens
- XF-AVC & MP4 Recording Formats
- 5 AXIS Image Stabilizer
- High Brightness/High Definition 8.9 cm LCD
- Type C USB for Video Class (UVC) Support
- Accessory Shoe, HDMI Terminal, Dual Type- C port & 3G SDI terminal (only in XA65)

XA65 MRP: ₹ 172 995.00/U incl. of all taxes

XA60 MRP: ₹ 114 995.00/U incl. of all taxes



Wi-Fi  
CERTIFIED

4K  
UHD

## XF605

Special Offer\*  
on XF605  
Camera Bag

- 1.0 Type CMOS Sensor & DIGIC DV7
- 4K 4:2:2 10 Bit
- 4K Compatible 15x Optical L IS Zoom Lens
- Eye AF/Head Detection AF
- EVF/LCD/HDMI/SDI Simultaneous Output
- IP Streaming

XF605 MRP: ₹ 475 995.00/U incl. of all taxes

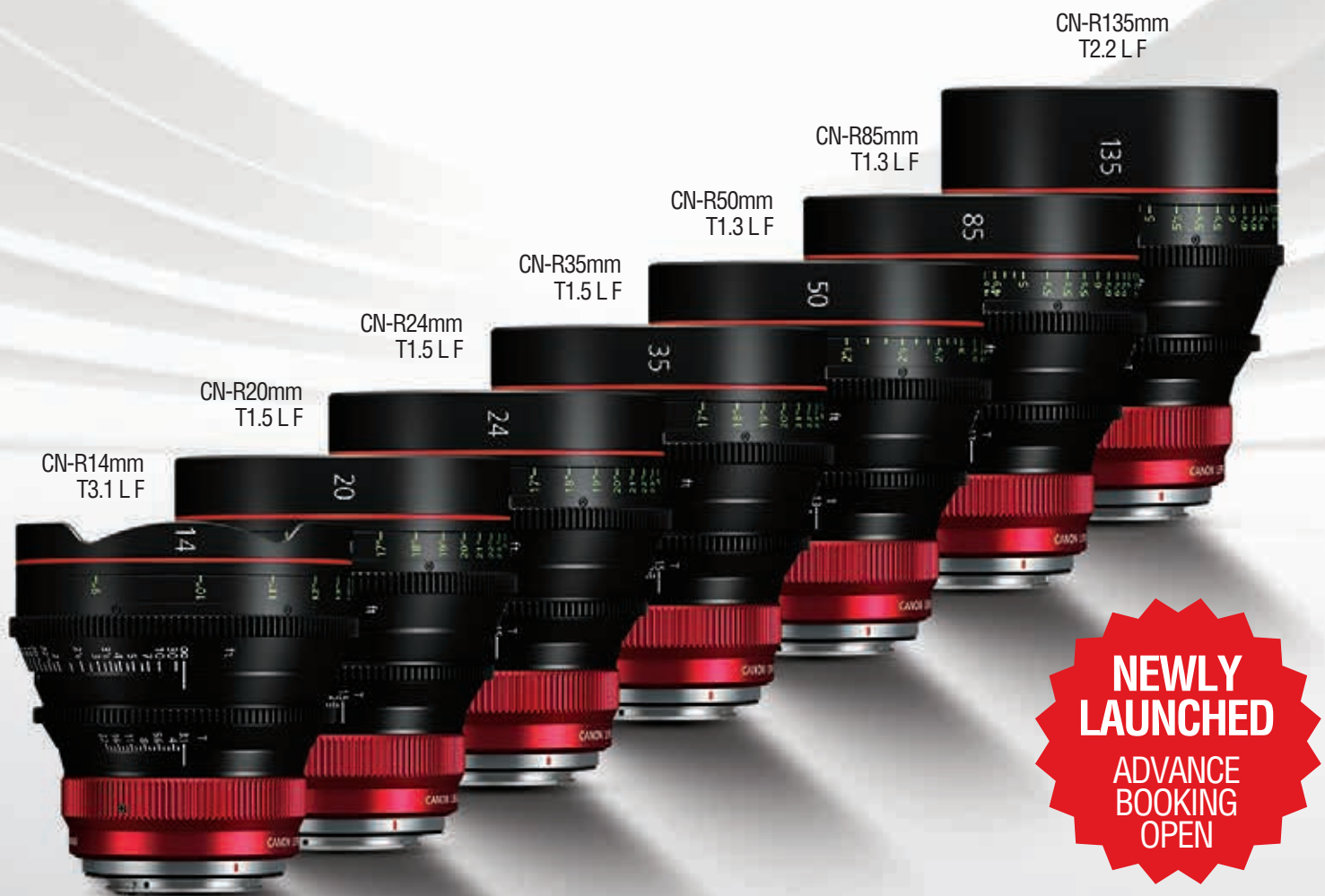
\*Offer valid till stocks last.

Camera bag available with all PRO DV models. All images and effects are simulated. Actual images may vary. EMI options available on select video and cinema cameras. EMI options available with Bajaj Finance | HDFC Bank | IDFC First Bank | Pine Labs. EMI finance is at sole discretion of Financier/Bank/Service Provider to customers. EMI available on select models. All prices are subject to change. For latest prices, please visit [in.canon](https://in.canon/en/consumer/web/emi-cashback-offers) and check out the relevant product section.

To know detailed T&C of EMI, please visit: <https://in.canon/en/consumer/web/emi-cashback-offers>.



## RF CINEMA PRIME LENSES



### FEATURES

- First RF mount Cinema lenses that Supports full-frame cameras
- Optical performance for 8K/4K cameras
- 11-blade aperture for beautiful bokeh
- Bright T number
- Distortion correction
- Focus breathing control
- Outstanding optical performance and rich expressive capability.
- Consistent color balance
- HDR support
- Design, operability, and dependability ideal for Cinema Style
- Operability consistent throughout series (Focus rotation angle/gear position/front lens diameter)
- Clearly visible distance indicator
- Display units can be changed to “ft” or “m”
- Phosphorescent indicators
- Supports Data Communication with Camera Functions

\*Offer valid till stocks last.

All images and effects are simulated. Actual images may vary. EMI options available on select video and cinema cameras. EMI options available with Bajaj Finance | HDFC Bank | IDFC First Bank | Pine Labs. EMI finance is at sole discretion of Financier/Bank/Service Provider to customers. EMI available on select models. All prices are subject to change. For latest prices, please visit [in.canon](https://in.canon/en/consumer/web/emi-cashback-offers) and check out the relevant product section.

To know detailed T&C of EMI, please visit: <https://in.canon/en/consumer/web/emi-cashback-offers>.

## EXPERIENCE THE NEXT LEVEL OF FILMMAKING WITH EOS R5C

MRP: **₹349 995.00/U**

(Body Only)

incl. of all taxes

**Netflix  
Approved**



**8K 60p**  
CINEMA RAW LIGHT

**45 MP STILL**  
FULL-FRAME CMOS SENSOR



**INTERNAL  
COOLING SYSTEM**  
FOR CONTINUOUS RECORDING

**4K120p**  
IN 4:2:2, 10 BIT

- 45MP Full-frame CMOS Sensor
- 8K/60P RAW Internal Recording
- New Internal Fan Cooling Unit for Non-stop Video Recording
- 4K/120P in 4:2:2, 10-bit Resolution, C-log 3, HDR Support with HLG and PQ Formats

**#KEEP  
ROLLING**



Scan to know more

\*Offer valid till stocks last.

All prices are subject to change. For latest prices, please visit [in.canon](https://www.canon.com) and check out the relevant product section. EMI options available with Bajaj Finance | HDFC Bank | IDFC First Bank | Pine Labs. EMI finance is at sole discretion of Financier/Bank/Service Provider to customers. EMI available on select models.



# CINEMA EOS CAMERAS



**5.9K** Full Frame Sensor  
**XF-AVC** 4K XF-AVC (4:2:2) 10-bit  
**HDR**

## EOS C500 Mark II (Body Only)

- 5.9K Full Frame CMOS Sensor
- 4K at 50p/60p with 4:2:2 Sampling
- Built-in Cinema RAW Light Recording on CF Express Card
- Dual Pixel CMOS AF with Dual Pixel Focus Guide
- Supports HLG, PQ, Log2 & Log3 Colour Science for Dynamic Range
- Dual XLR & 12G-SDI Terminal

MRP: ₹ 1 345 990.00/U incl. of all taxes



**4K** 120p  
**DGO** Dual Gain Output

## EOS C300 Mark III (Body Only)

- Up to 16+ Stops of DYNAMIC RANGE with New DGO Sensor
- 4K @120 Frames per second + 2K Crop @180 Frames per second
- Canon LOG 2, 3 & HDR (PQ & HLG) Colour Science
- Internal Cinema RAW Light & XF-AVC ALL-I / Long GOP Recording
- Dual XLR & 12G-SDI Terminal

MRP: ₹ 1 085 000.00/U incl. of all taxes

Special Offer\*

on EOS C500 Mark II & EOS C300 Mark III  
512GB CF Express Card + Card Reader + Camera Bag



Mount Adapter EF-EOS R 0.71x<sup>1</sup>

**4K** 120p  
**DGO** Dual Gain Output

## EOS C70 (Body Only)

New Cinema EOS Design with an RF Mount + EF Mount (with a Mount Adapter)

- Up to 16+ Stops of DYNAMIC RANGE with New DGO Sensor
- 4K @120p + 2K (Crop) @180p
- 4:2:2 10 Bit Colour Sampling + Canon LOG 2, 3 & HDR Colour Science
- XF AVC, MP4 + Internal Cinema RAW Light Recording Format (with New Firmware Update)
- Built-in TC Port + Dual Mini XLR Port
- Eye-Detection Autofocus (AF)<sup>#</sup>

MRP: ₹ 569 995.00/U incl. of all taxes

Special Offer\*  
on EOS C70  
Camera Bag

## ACCESSORIES

MODEL	COMPATIBLE MODELS
<b>BATTERY PACK</b>	
BATTERY PACK BP-820	XA35 / XA30 / XA25 / XA20 / XA10 / HFG30 / HFG25 / HGF20 / XA50/55 / XA40/45 / XA11/15 / XA65/60 / XA75/70
BATTERY PACK BP-828	XA405 / XA400 / XA35 / XA30 / XA25 / XA20 / XA15 / XA11 / XA10 / HFG30/HFG25/HFG20 / XA55/50 / XA45/40 / XA65/60 / XA75/70
BATTERY PACK BP-955	EOS C500 / EOS C300 / EOS C100 Mark II / EOS C100 / XF305 / XF300 / XF205 / XF200 / XF105
BATTERY PACK BP-975	EOS C500 / EOS C300 / EOS C100 Mark II / EOS C100 / XF305 / XF300 / XF205 / XF200 / XF105
BATTERY PACK BP-A30	EOS C300 Mark II / EOS C300 Mark II PL / EOS C200 / EOS C500 Mark II / XF 705/EOS C300 MK III/EOS C70 / XF605
BATTERY PACK BP-A60	EOS C300 Mark II / EOS C300 Mark II PL / EOS C200 / EOS C500 Mark II / XF 705/EOS C300 MK III/EOS C70 / XF605
<b>BATTERY CHARGER</b>	
BATTERY CHARGER CG-800	XA35 / XA30 / XA25 / XA20 / HFG30 / HFG25 / BP-800 Series / XA15 / XA11 / XA45/40 / XA50/55 / XA65/60 / XA75/70
BATTERY CHARGER CG-A10 POWER	EOS C300 Mark II / EOS C300 Mark II PL with Double Slots / C200 / EOS C500 Mark II / XF705/EOS C300 MK III/EOS C70
BATTERY CHARGER CG-A20	EOS C300 Mark II / EOS C200 / EOS C500 Mark II / XF705/EOS C300 MK III/EOS C70
LP-E6NH	EOS R5 C
LC-E6E	EOS R5 C
<b>AC ADAPTER</b>	
AC ADAPTER CA-935	EOS C500 / EOS C300 / EOS C100 / XF205 / XF200
AC ADAPTER CA-946	XF300 / XF305 / XF205 / XF200 / XF105 / XF100 / XC15 / XF400 / XF405
COMPACT POWER ADAPTER CA-A10	EOS C300 Mark II / EOS C300 Mark II PL / C200
POWER ADAPTER CA-570E	XA35 / XA30 / XC10 / XA25 / XA20 / HFG30 / HFG25 / XA15 / XA11 / XA45/40
DR-E6C DC COUPLER	EOS R5 C
USB TYPE-C POWER ADAPTER PD-E1	EOS R5 C / EOS R / XA65/60 / XA75/70
<b>REMOTE CONTROLLER</b>	
REMOTE CONTROLLER RC-V100	EOS C700 / EOS C500 MK II / EOS C300 MK III/EOS C70/ EOS C300 Mark II / EOS C300 / EOS C100 Mark II / EOS C100 / EOS C500 Mark II / XF305/ XF300 / XF205 / XF200 / XF705 / XA 45/40 / XA55/50 / XA65/60 / XA75/70
WIRELESS CONTROLLER WL-D89	XA35 / XA30 / XA25 / XA20 / XA55/50 / HFG30 / HFG25 / HF M506 / HF M56 / HF M52

\*Offer valid till stocks last.

<sup>#</sup>Through new firmware update. <sup>1</sup>R 0.71x Mount Adapter sold separately. All images and effects are simulated. Actual images may vary. All prices are subject to change. For latest prices, please visit [in.canon.com](https://in.canon.com/en/consumer/web/emi-cashback-offers) and check out the relevant product section. EMI options available with Bajaj Finance | HDFC Bank | IDFC First Bank | Pine Labs. EMI finance is at sole discretion of Financier/Bank/Service Provider to customers. EMI available on select models. To know detailed T&C of EMI, please visit: <https://in.canon.com/en/consumer/web/emi-cashback-offers>



# EOS R SYSTEM



**Canon**

Delighting You Always

Canon India Pvt. Ltd.

Corporate Office: 7<sup>th</sup> Floor,  
Tower B, Building No. 5, DLF Epitome,  
DLF Phase III, Gurugram – 122002

For Canon Service Centres,  
Call: 1860 180 3366 or 1800 208 3366 or  
Visit: <http://bit.ly/canonservicenetwork>

Canon Master Service Centres:

Delhi, Kolkata, Mumbai, Bengaluru, Chennai and Kochi

Canon Authorised Service Franchisee:

Ahmedabad, Bhubaneswar, Chennai, Guwahati,  
Hyderabad, Indore, Jaipur, Ludhiana, Patna and Pune

For other details, visit: [in.canon](http://in.canon)

Follow Canon India on Facebook, Youtube and Twitter  
[canonindia\\_official](https://www.instagram.com/canonindia_official) on Instagram

All images and effects are simulated. Actual images may vary. Models and specifications are subject to change without prior notification. Prices mentioned for all products are MRP (inclusive of all taxes). Errors and omissions expected. Wi-Fi is a trademark of respective company. Canon is a registered trademark of Canon Inc. Offer valid till stocks last. Wi-Fi support varies by region and device type. Uploading of still images/videos to any website directly from Wi-Fi camera is subject to registration on Canon Image Gateway. Transfer of still images/videos to iPhone/iPad/Android devices from Wi-Fi camera is subject to download of free app, Canon Camera Connect. Both NFC and Wi-Fi can be used to shoot remotely from an Android device, or even upload directly to social networking sites. Manual explains file transfer between camera and smartphone. Offer period at Canon India's discretion. T&C apply. **EMI options available with\* Bajaj Finance | HDFC Bank | IDFC First Bank | Pine Labs. \*EMI finance is at sole discretion of Financer/Bank/Service Provider to customer. EMI options are available at select stores. To know detailed T&C of EMI, please visit: <https://in.canon/en/consumers/web/emi-cashback-offers>**

Dealer's Stamp  
2023V1