

Canon

Delighting You Always

**MAKE IT
[DRAMAGIC]
WITH THE
EOS R6 Mark II**



4K 60p

FHD 180p

HDR MOVIE

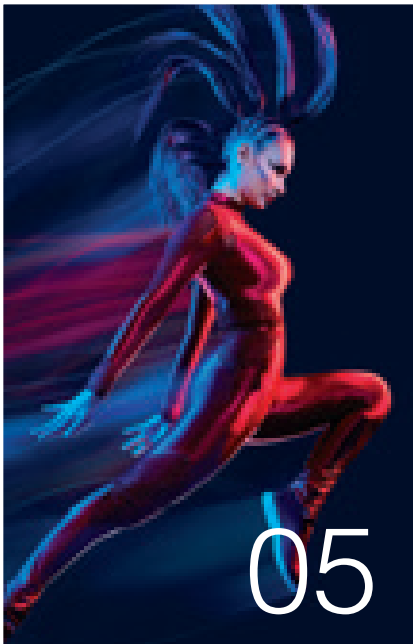
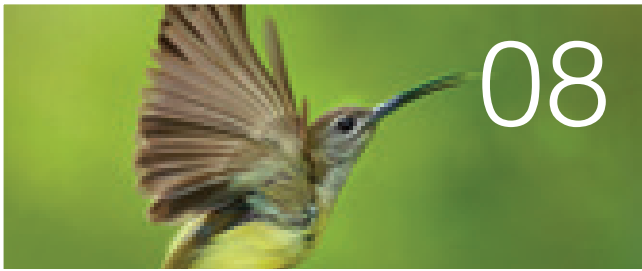
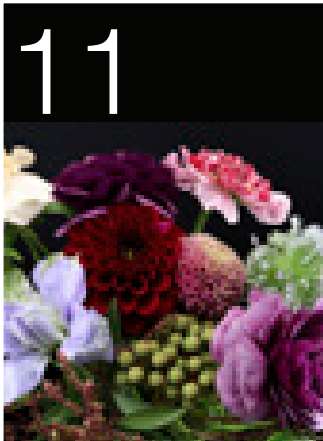
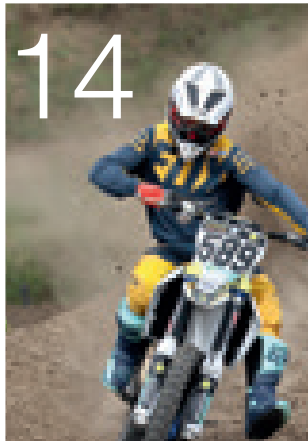


**Upto
40** Frames
per second

Dual Pixel CMOS AF II

IN-BODY IMAGE
STABILIZER

PRODUCT RANGE CATALOGUE
APRIL 2023

CONTENTS

	     	
01	TECHNOLOGY: DSLR/MIRRORLESS	03
02	MIRRORLESS CAMERAS	05
03	DSLR CAMERAS	13
04	DIGITAL CAMERAS	16
05	LENSES	18
06	ACCESSORIES	21
07	PROFESSIONAL VIDEO CAMERAS	22
08	CINEMA EOS CAMERAS	24

CANON DIGITAL TRINITY

Only Canon has a unique advantage of designing all three elements of the camera, i.e. the lens, image sensor and imaging processor. This provides higher quality images in diverse shooting conditions. We call this the 'Canon Digital Trinity.'

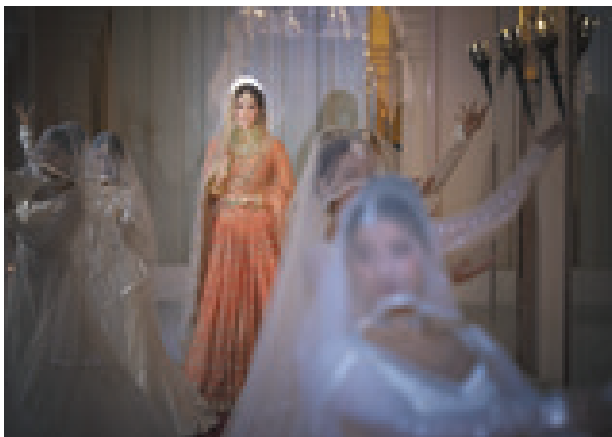
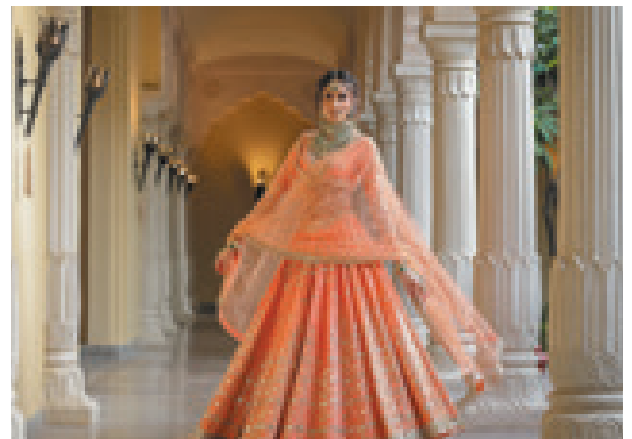


CINEMATIC MOVIE RECORDING

Beyond future proofing your videos, true-to-life realism with 8K^{*1} no-crop video recording, which provides video editors the ultimate freedom to pan across footages or zoom in on any subject without any loss of quality when delivered in FHD or even 4K! With all the additional pixels, it is also possible to crop out anything distracting, reframe the composition or perform post-stabilisation. 8K resolution is 4 times than that of 4K^{*1} and 16 times of FHD^{*1}.

DUAL PIXEL CMOS AF^{*2}

Dual Pixel CMOS AF is a sensor-based, Phase Detection AF technology. It provides smooth, high performance focus tracking, while recording movies and precise focus during still photo shoot. AF coverage is possible for the entire frame from corner to corner (approx. 100% x 100%)^{*1} when AF points are set to automatic selection. The AF coverage enables a versatile and responsive experience for extreme precision - ideal for shooting with creative composition and framing.



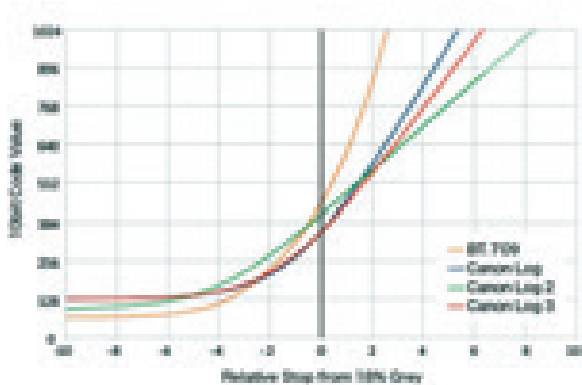
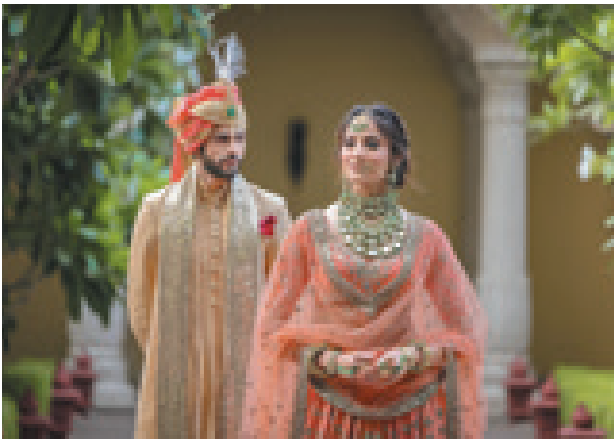
IN-BODY IMAGE STABILISER^{*3}

5-axis camera-shake blur correction function works in tandem with the lens's image stabiliser, effectively reducing image blur equivalent to up to an 8-stop increase in shutter speed - resulting in reduced shakiness and improved usability of footages even when shooting from challenging angles or when shooting handheld while walking. It also dramatically expands the possibilities of capturing sharp handheld images and videos in low-light conditions.

^{*1} Feature available in select cameras. ^{*2} DPAF / DPAF II is available in select cameras. ^{*3} In-Body IS available in select cameras. ^{*1} 100% AF coverage is available in select cameras. For more information, check the product section of the brochure. All images and effects are simulated. Actual image may vary. To know detailed T&C of EMI, please visit: <https://in.canon/en/consumer/web/emi-cashback-offers>

Eye Control AF*1

Experience the power of focusing by sight, which redefines the limits of focusing speed and accuracy. Direct the AF point with your eye by looking at the desired subject through the viewfinder to achieve focus and recommended in situations with multiple subjects as it provides a high degree of flexibility in switching focus quickly from one subject to another.



Canon Log 3*1

Canon Log 3 is widely used in the Cinema EOS System as it is less prone to blown-out highlights compared to Canon Log gamma. Rich tones are accurately rendered for high-contrast scenes. In addition, it supports not only the standard BT.709 and BT.2020 colour gamut, but also Cinema Gamut, allowing users to provide visually consistent videos where supporting EOS cameras are used in conjunction with other Cinema EOS cameras.

THE REVOLUTIONARY RF MOUNT SYSTEM*4

The new and revolutionary RF Mount System is the latest technological advancement in the EOS universe. Featuring a large 54mm diameter and a high bandwidth 12-pin communication system. The large diameter mount coupled with 20mm short back focus higher quality, wider aperture optics in a relatively compact size. This brings benefits of improved speed and performance that allows more image corrections (DLO or Digital Lens Optimiser) and improved performance of image stabilisation.



FUTURE OF PHOTO STORAGE^2

A cloud-based storage, the image.canon is a cloud service designed to automatically forward image data in its original format from the camera to the computer, mobile device and supported third-party services. image.canon stores the uploaded original images and videos for 30 days and offers the option of a long-term storage of up to 10GB. This gives photographers the freedom to share images to popular social media sites such as Flickr, Google Drive and YouTube.

*4 EOS R System, RF Mount System supporter. ^2 Information may be subject to change. For more information, check the product section of the brochure. All images and effects are simulated. Actual image may vary. To know detailed T&C of EMI, please visit: <https://in.canon/en/consumer/web/emi-cashback-offers>

MIRRORLESS CAMERAS

6K

60p
12-BIT RAW

CINEMATIC RESOLUTION

Photo Credit: Arjun Mark

Up to
30
frames
per second

**BLAZING FAST
CAPTURES**



**FOLLOWS
THE EYES**

**IN-BODY
IMAGE
STABILISER**

HIGH STABILITY

EOS R3 (Body Only)
MRP: ₹537 995.00/U
incl. of all taxes

EOS R3

In the Heart of Action

- 6k 60p RAW / 4K 120p / FHD 240p Movie Recording
- 24.1 Megapixel Back Illuminated Full Frame CMOS Sensor
- Up to 195 fps High Speed Burst Shooting
- Eye Control AF
- People / Animal / Vehicle Priority AF
- Low Light AF at EV-7.5
- 1/64000s – Max. Electronic Shutter Speed
- Up to 8-Stops Image Stabilisation

**DIGIC
X**

**Dual Pixel
CMOS AF II**

ISO
102400
FHD 25600
4K 25600

Eye Control

Multiple Exposure

GPS

image.canon

All prices are subject to change. For latest prices, please visit in.canon and visit the relevant product section. EMI options available with Bajaj Finance | HDFC Bank | IDFC First Bank | Pine Labs. EMI finance is at sole discretion of Financier/Bank/Service Provider to customers. EMI available on select models. All images and effects are simulated. Actual image may vary.

MIRRORLESS CAMERAS



Photo Credit: Rohit Dhingra
Captured on EOS R5
RF 85mm f/1.2L USM DS

BORN TO RULE

EOS R5



- 8K 30p RAW / 4K 120p Movie Recording
- 45.0 Megapixel Full-Frame CMOS Sensor
- Up to 5,940 Selectable AF Points Positions
- Low Light AF at EV-6.0
- ISO 100-51200 (Expandable to ISO 102400)
- Up to 8-Stops Image Stabilisation

Dual Pixel
CMOS AF II

DIGIC
X

AF Supports
F22

image.canon

Wi-Fi
Bluetooth®

ANIMAL
DETECTION
AF

20 fps/12 fps
(Electronic/Mechanical)
Shutter

EOS R5 (RF24-105mm f/4L IS USM)
MRP: ₹ 465 995.00/U incl. of all taxes

EOS R5 (Body Only)
MRP: ₹ 365 995.00/U incl. of all taxes

All prices are subject to change. For latest prices, please visit in.canon and check out the relevant product section. EMI options available with Bajaj Finance | HDFC Bank | IDFC First Bank | Pine Labs. EMI finance is at sole discretion of Financier/Bank/Service Provider to customers. EMI available on select models. All images and effects are simulated. Actual image may vary.

MAKE IT [DRAMAGIC] WITH THE EOS R6 Mark II



EOS R6 Mark II

- 6K 60p Pro Res RAW w/External Recorder
- Full HD 180p w/Canon Log3
- Up to 40 fps Continuous Shooting
- HDR [Moving Subjects]
- Dual Pixel CMOS AF II
- Co-ordinated IS (Lens IS + In-Body IS + Movie Digital IS)
- UVC/UAC Compatibility

EOS R6 Mark II (RF24-105mm f4 L IS USM)
MRP: ₹343 995.00/U incl. of all taxes

EOS R6 Mark II (RF24-105mm f4-7.1 IS STM)
MRP: ₹271 995.00/U incl. of all taxes

EOS R6 Mark II (Body Only)
MRP: ₹243 995.00/U incl. of all taxes

24.2 MEGA
PIXELS
CMOS

DIGIC
X

180p
High Frame Rate
FULL HD Movie

Up to
40
Frames
per second

Panorama Mode

In-Camera
Digital Lens
Optimizer

All prices are subject to change. For latest prices, please visit in.canon and check out the relevant product section. EMI options available with Bajaj Finance | HDFC Bank | IDFC First Bank | Pine Labs. EMI finance is at sole discretion of Financier/Bank/Service Provider to customers. EMI available on select models. All images and effects are simulated. Actual image may vary.

TAKE OFF

EXPLORE NEW FLIGHTS OF PASSION

New

EOS R7

Take Off

- 32.5 Megapixel APS-C CMOS Sensor
- 4K 60p / Full HD 120p Continuous Movie Recording
- Up to 30 fps Continuous Shooting with AF/AE Tracking
- Dual SD Card Slots
- Canon Log 3 for Colour Grading
- Up to 8-Stops Image Stabilisation
- Multi-function Accessory Shoe



EOS R7 (RF-S18-150mm f3.5-6.3 IS STM)

MRP: ₹ 175 995.00/U incl. of all taxes

EOS R7 (Body)

MRP: ₹ 138 995.00/U incl. of all taxes

All prices are subject to change. For latest prices, please visit in.canon and check out the relevant product section. EMI options available with Bajaj Finance | HDFC Bank | IDFC First Bank | Pine Labs. EMI finance is at sole discretion of Financier/Bank/Service Provider to customers. EMI available on select models. To know detailed T&C of EMI, please visit: <https://in.canon/en/consumer/web/emi-cashback-offers>. All images and effects are simulated. Actual image may vary.

NEW LAUNCHES



New EOS R8

- 4K 60p Movie Recording w/ 6K Oversampling
- Full HD 180p Slow Motion Movie Recording
- 24.2 Megapixels Full Frame CMOS Sensor
- Canon Log 3 for Color Grading
- Up to 40 fps Continuous Shooting
- Human/Animal/Vehicle Priority AF
- Up to 100% AF Coverage Area
- In-Camera Depth Compositing

EOS R8 (RF24-50mm f/4.5-6.3 IS STM)
MRP: ₹ 161 995.00/U incl. of all taxes
EOS R8 (Body)
MRP: ₹ 142 995.00/U incl. of all taxes



New EOS R50

- 4K 30p / Full HD 120p Movie Recording
- Movie IS/Movie for Close-up Demos mode
- Focus Breathing Correction
- 24.2 Megapixel APS-C CMOS Sensor
- Up to 15 fps Continuous Shooting
- Human/Animal/Vehicle Priority AF
- Up to 100% AF Coverage Area
- Light & Compact body design

EOS R50
(RF-S 18-45mm f/4.5-6.3 IS STM + RF-S55-210mm f/5-7.1 IS STM)
MRP: ₹ 97 995.00/U incl. of all taxes
EOS R50 (RF-S 18-45mm f/4.5-6.3 IS STM)
MRP: ₹ 75 995.00/U incl. of all taxes



New RF-S55-210mm f/5-7.1 IS STM

MRP: ₹ 31 995.00/U incl. of all taxes

New RF24-50mm f/4.5-6.3 IS STM

MRP: ₹ 28 995.00/U incl. of all taxes

All prices are subject to change. For latest prices, please visit in.canon and check out the relevant product section. EMI options available with Bajaj Finance | HDFC Bank | IDFC First Bank | Pine Labs. EMI finance is at sole discretion of Financier/Bank/Service Provider to customers. EMI available on select models. All images and effects are simulated. Actual image may vary.

FIND YOUR *Story*



New

EOS R10

Find Your Own Story

- 24.2 Megapixel APS-C CMOS Sensor
- 4K 60p / Full HD 120p Continuous Movie Recording
- Up to 23 fps Continuous Shooting with AF/AE Tracking
- In-Camera Panorama & Depth Compositing
- Human/Animal/Vehicle Priority AF
- Multi-function Accessory Shoe
- Light & Compact Body Design



Dual Pixel CMOS AF II

ISO 100-32000
[Expandable to ISO 51200]



**RF-S Lens
Compatible**

EOS R10 (RF-S18-150mm f3.5-6.3 IS STM)

MRP: ₹ 119 995.00/U incl. of all taxes

EOS R10 (RF-S18-45mm f4.5-6.3 IS STM)

MRP: ₹ 92 995.00/U incl. of all taxes

EOS R10 (Body)

MRP: ₹ 82 995.00/U incl. of all taxes

All prices are subject to change. For latest prices, please visit [in.canon](https://in.canon/en/consumer/web/emi-cashback-offers) and check out the relevant product section. EMI options available with Bajaj Finance | HDFC Bank | IDFC First Bank | Pine Labs. EMI finance is at sole discretion of Financier/Bank/Service Provider to customers. EMI available on select models. To know detailed T&C of EMI, please visit: <https://in.canon/en/consumer/web/emi-cashback-offers>. All images and effects are simulated. Actual image may vary.

MIRRORLESS CAMERAS



Captured on Canon EOS RP



EOS RP

Light Heavyweight

- 26.2 Megapixel Full-Frame CMOS Sensor
- 5.0 fps Continuous Shooting
- ISO 100-40000 (Expandable to ISO 102400)
- Up to 4,779 Selectable AF Point Positions
- Low Light AF at EV-5
- 4K 24p / Full HD 60p Movie Recording

Dual Pixel AF
CMOS

26.2 MEGA
PIXELS
CMOS

4K
EOS Movie
4K • FULL HD

DIGIC
8

EOS
Digital Lens
Optimizer

Wi-Fi
Bluetooth®

EOS RP (Body)
MRP: ₹94 995.00/U incl. of all taxes

All prices are subject to change. For latest prices, please visit in.canon and check out the relevant product section. More range of RF Lenses available. For more details, visit in.canon. EMI options available with Bajaj Finance | HDFC Bank | IDFC First Bank | Pine Labs. EMI finance is at sole discretion of Financier/Bank/Service Provider to customer. EMI available on select models.

To know detailed T&C of EMI, please visit: <https://in.canon/en/consumer/web/emi-cashback-offers>. All images and effects are simulated. Actual image may vary.

MIRRORLESS CAMERAS



Captured on EOS M50 Mark II, EF-M 18-150mm f/3.5-6.3 IS STM



EOS M50 Mark II

Flex Your Stories

- 24.1 Megapixel APS-C CMOS Sensor
- 4K 24p / FHD 60p Movie Recording
- Supports Vertical Video Recording
- 10 fps Continuous Shooting
- 3.5mm External Microphone Input

Dual Pixel AF
CMOS



EOS M50 Mark II (EF-M15-45mm f/3.5-6.3 IS STM Lens)
MRP: ₹ 66 995.00/U incl. of all taxes

*1To know the rules and restrictions of live streaming functionality, please visit <https://rb.gy/d7fd1h>. All prices are subject to change. For latest prices, please visit in.canon and check out the relevant product section. EMI options available with Bajaj Finance | HDFC Bank | IDFC First Bank | Pine Labs. EMI finance is at sole discretion of Financier/Bank/Service Provider to customers. EMI available on select models.

To know the detail T&C of EMI, please visit: <https://in.canon/en/consumer/web/emi-cashback-offers>. All images and effects are simulated. Actual image may vary.

DSLR CAMERAS

Captured on EOS 5D Mark IV, EF 14mm f/2.8 L II USM

PROMO OFFER*

512GB
CFEXPRESS CARD
& READER

EOS-1D X Mark III

Masters, Meet The Master

- 20.1 Megapixel Full-Frame CMOS Sensor
- ISO 100-102400 (Expandable to ISO 819200)
- 191 Points AF (155 Points Cross Type)
- 16 fps (Mechanical Shutter)
- 20 fps (Live View/Electronic Shutter)
- 4,00,000 Pixels RGB + IR Metering Sensor
- 4K 60p / FHD 120p Movie Recording

EOS-1D X Mark III (Body)
MRP: ₹654 995.00/U
incl. of all taxes



EOS 5D Mark IV

The Power of 5

- 30.4 Megapixel Full-Frame CMOS Sensor
- ISO 100-32000 (Expandable to ISO 102400)
- 61 Points AF (41 Points Cross Type)
- 1,50,000 Pixels RGB + IR Metering Sensor
- 4K 30p / Full HD 60p Movie Recording
- Built-in Wi-Fi / NFC / GPS

EOS 5D Mark IV
(EF 24-105mm f/4L IS II USM Lens)
MRP: ₹337 995.00/U
incl. of all taxes

Dual Pixel
CMOS AF

DIGIC
X

5.5K
RAW
@60FPS
@60FPS

FACE
DETECTION
HEAD DETECTION

191-Point
155 Cross-Type
Points AF

Dual Pixel
CMOS AF

DIGIC
6+

4K
EOS Movie
4K+FULL HD

70
Frames
Per Second

Digital Lens
Optimizer

*Offer valid till stocks last.

All prices are subject to change. For latest prices, please visit in.canon and check out the relevant product section. EMI options available with Bajaj Finance | HDFC Bank | IDFC First Bank | Pine Labs. EMI finance is at sole discretion of Financier/Bank/Service Provider to customers. EMI available on select models. To know detailed T&C of EMI, please visit: <https://in.canon/en/consumer/web/emi-cashback-offers>. All images and effects are simulated. Actual image may vary.

DSLR CAMERAS



Captured on EOS 90D, EF-S 18-135mm f/3.5-5.6 IS STM



EOS 6D^{II} Mark II

Sense of Genius

- 26.2 Megapixel Full-Frame CMOS Sensor
- ISO 100-40000 (Expandable to ISO 102400)
- 45 AF Points (All Cross Type)
- 6.5 fps Continuous Shooting
- 7,560 Pixels RGB + IR Metering Sensor
- Full HD 60p Movie Recording



EOS 6D Mark II
(EF 24-105mm f/4L IS II USM Lens)
MRP: ₹211 995.00/U incl. of all taxes



EOS 90D

Focus x Speed

- 32.5 Megapixel APS-C CMOS Sensor
- ISO 100-25600 (Expandable to ISO 51200)
- 45 AF Points (All Cross Type)
- 10.0 fps Continuous Shooting
- 2,20,000 Pixels RGB + IR Metering Sensor
- 4K 30p / Full HD 120p Movie Recording



EOS 90D (EF-S18-135mm IS USM Lens)
MRP: ₹144 995.00/U incl. of all taxes
EOS 90D (Body)
MRP: ₹113 495.00/U incl. of all taxes



EOS 850D

Capture Greatness On The Go

- 24.1 Megapixel APS-C CMOS Sensor
- ISO 100-25600 (Expandable to 51200)
- 45 AF Points (All Cross Type)
- 7.0 fps Continuous Shooting
- 2,20,000 Pixels RGB + IR Metering Sensor
- 4K 30p / Full HD 60p Movie Recording



EOS 850 D
(EF-S18-55mm f/4-5.6 IS STM Lens)
MRP: ₹88 995.00/U incl. of all taxes

All prices are subject to change. For latest prices, please visit [in.canon](https://in.canon/en/consumer/web/emi-cashback-offers) and check out the relevant product section. EMI options available with Bajaj Finance | HDFC Bank | IDFC First Bank | Pine Labs. EMI finance is at sole discretion of Financier/Bank/Service Provider to customers. EMI available on select models. To know detailed T&C of EMI, please visit: <https://in.canon/en/consumer/web/emi-cashback-offers>. All images and effects are simulated. Actual image may vary.

DSLR CAMERAS



Captured on EOS 200D II, EF-S 18-55 f/4-5.6 IS STM



EOS 200D II

Do Great with Canon

- 24.1 Megapixel APS-C CMOS Sensor
- ISO 100-25600 (Expandable to ISO 51200)
- 9-Point AF (Centre Cross Type)
- 5.0 fps Continuous Shooting
- 4K 24p / Full HD 60p Movie Recording
- Creative Assist Function



EOS 200D II (EF-S18-55mm f/4-5.6 IS STM Lens)
MRP: ₹ 68 995.00/U incl. of all taxes



EOS 1500D

Make Every Trip an EOS Trip

- 24.1 Megapixel APS-C CMOS Sensor
- ISO 100-6400 (Expandable to ISO 12800)
- 9-Point AF (Centre Cross Type)
- 3.0 fps Continuous Shooting
- Full HD 30p Movie Recording
- Built-in Creative Filters



EOS 1500D (EF-S18-55mm f/3.5-5.6 IS II Lens)
MRP: ₹ 47 995.00/U incl. of all taxes

All prices are subject to change. For latest prices, please visit [in.canon](https://in.canon/en/consumer/web/emi-cashback-offers) and check out the relevant product section. EMI options available with Bajaj Finance | HDFC Bank | IDFC First Bank | Pine Labs. EMI finance is at sole discretion of Financier/Bank/Service Provider to customers. EMI available on select models. To know detailed T&C of EMI, please visit: <https://in.canon/en/consumer/web/emi-cashback-offers>. All images and effects are simulated. Actual image may vary.

DIGITAL CAMERAS

PowerShot SX70 HS



Rev up Your Photography Skills with OLED EVF and 65x Zoom

- 20.3 Megapixel HS CMOS Sensor
- 65x Optical Zoom
- Zoom Framing Assist
- Intelligent IS
- Manual Movie Mode
- 4K 30p / Full HD 60p Movie Recording

20.3 MEGA PIXELS CMOS | 4K Frame Grab | 130x ZoomPlus | DIGIC 8 | Wi-Fi Bluetooth

MRP: ₹55 995.00/U incl. of all taxes

PowerShot SX740 HS



Sleek Camera with 40x Super Zoom for Capturing Moments in Life and Travel

- 20.3 Megapixel 1/2.3-Type HS CMOS Sensor
- 40x Optical Zoom
- Zoom Framing Assist
- Feature Assistant
- Dual Sensing IS
- 4K 30p / Full HD 60p Movie Recording

20.3 MEGA PIXELS CMOS | 80x ZoomPlus | 4K Frame Grab | DIGIC 8 | Wi-Fi Bluetooth | 4K Time-Lapse Movie

MRP: ₹38 995.00/U incl. of all taxes

IXUS 285 HS



Pocket-sized Picture Perfection

- 20.2 Megapixel HS CMOS Sensor
- 12x Optical Zoom
- Hybrid Auto
- Intelligent IS
- Full HD Movie Recording

20.2 MEGA PIXELS | DIGIC 4+ | INTELLIGENT IS | Wi-Fi / NFC

MRP: ₹24 995.00/U incl. of all taxes

All images and effects are simulated. Actual images may vary. All prices are subject to change. For latest prices, please visit in.canon and check out the relevant product section. EMI options available with Bajaj Finance | HDFC Bank | IDFC First Bank | Pine Labs. EMI finance is at sole discretion of Financier/Bank/Service Provider to customers. EMI available on select models. To know detailed T&C of EMI, please visit: <https://in.canon/en/consumer/web/emi-cashback-offers>

DIGITAL CAMERAS

PowerShot G7X Mark III



The Next Step-up for Your Everyday Photography

- 20.1 Megapixel 1.0 Type Stacked CMOS Sensor
- ISO 125-12800 (Expandable to ISO 25600)
- 4.2x Optical Zoom
- RAW Shooting
- 4K 30p / Full HD 120p Movie Recording
- Supports Live Streaming*¹



MRP: ₹62 995.00/U incl. of all taxes

PowerShot G7X Mark II



Next Generational Image Quality and Power

- 20.1 Megapixel 1.0 Type CMOS Sensor
- ISO 125-12800
- 4.2x Optical Zoom
- RAW Shooting
- Custom Control Ring
- Full HD 60p Movie Recording



MRP: ₹55 995.00/U incl. of all taxes

COMPACT PHOTO PRINTERS



SELPHY CP1500

Mobile Wi-Fi Printer with a variety of print functions. A compact, portable Wi-Fi Printer that prints quality photos directly from your camera or smartphone anywhere, anytime, at any occasion.

MRP: ₹11 995.00/U incl. of all taxes

RP 108(IN)

RP108(IN)
Consumables for
Selphy CP1000
Selphy CP1300
Selphy CP1500



MRP: ₹1 490.00/U incl. of all taxes



SELPHY CP1000

Boasts superior mobility and high-quality print outs. Selphy unique dye-sublimation printing technology ensures that photographs last for 100 years.

MRP: ₹7 495.00/U incl. of all taxes

KP 108(IN)

KP108(IN)
Consumables for
Selphy CP1000
Selphy CP1300
Selphy CP1500



MRP: ₹1 490.00/U incl. of all taxes



Dye-Sub

USB
Printing

Ultra Compact Design

*¹To know the rules and restriction on live streaming functionality, please visit <https://bit.ly/2LHgRXS>. All images and effects are simulated. Actual images may vary. All prices are subject to change. For latest prices, please visit [in.canon](https://www.canon.in) and check out the relevant product section. EMI options available with Bajaj Finance | HDFC Bank | IDFC First Bank | Pine Labs. EMI finance is at sole discretion of Financier/Bank/Service Provider to customers. EMI available on select models. To know detailed T&C of EMI, please visit: <https://in.canon/en/consumer/web/emi-cashback-offers>

LENSES

Photo Credit: Nitin Arora
Captured on EOS R6, RF 24-70 f/2.8L IS USM

RF LENSES

A New Generation of Lenses for EOS R System



RF14-35mm f/4L IS USM
MRP: ₹158 995.00/U
incl. of all taxes



RF15-35mm f/2.8L IS USM
MRP: ₹225 995.00/U
incl. of all taxes



RF16mm f/2.8 STM
MRP: ₹27 995.00/U
incl. of all taxes



New
RF24-50mm f/4.5-6.3 IS STM
MRP: ₹28 995.00/U
incl. of all taxes



RF24-70mm f/2.8L IS USM
MRP: ₹225 995.00/U
incl. of all taxes



RF24-105mm f/4L IS USM
MRP: ₹118 995.00/U
incl. of all taxes



RF24-240mm f/4-6.3 IS USM
MRP: ₹83 495.00/U
incl. of all taxes



RF28-70mm f/2L USM
MRP: ₹291 995.00/U
incl. of all taxes



RF35mm f/1.8 MACRO IS STM
MRP: ₹45 995.00/U
incl. of all taxes

All prices are subject to change. For latest prices, please visit in.canon and check out the relevant product section. More range of RF Lenses available. For more details, visit in.canon. EMI options available with Bajaj Finance | HDFC Bank | IDFC First Bank | Pine Labs. EMI finance is at sole discretion of Financier/Bank/Service Provider to customers. EMI available on select models. To know detailed T&C of EMI, please visit: <https://in.canon/en/consumer/web/emi-cashback-offers>. All images and effects are simulated. Actual image may vary.

LENSES

	RF50mm f/1.8 STM MRP: ₹18 995.00/U incl. of all taxes		RF70-200mm f/4L IS USM MRP: ₹169 995.00/U incl. of all taxes		RF70-200mm f/2.8L IS USM MRP: ₹262 995 .00/U incl. of all taxes
	RF85mm f/2 Macro IS STM MRP: ₹54 495.00/U incl. of all taxes		RF85mm f/1.2L USM MRP: ₹262 995.00/U incl. of all taxes		RF85mm f/1.2L USM DS MRP: ₹299 995.00/U incl. of all taxes
	RF100-400mm f/5.6-8 IS USM MRP: ₹60 495.00/U incl. of all taxes		RF100mm f/2.8L Macro IS USM MRP: ₹136 995.00/U incl. of all taxes		RF100-500mm f/4.5-7.1L IS USM MRP: ₹277 995.00/U incl. of all taxes
	RF135mm f/1.8L IS USM MRP: ₹219 495.00/U incl. of all taxes		RF400mm f/2.8L IS USM MRP: ₹1 169 995.00/U incl. of all taxes		RF600mm f/11 IS STM MRP: ₹76 495.00/U incl. of all taxes
	RF600mm f/4L IS USM MRP: ₹1 249 995.00/U incl. of all taxes		RF800mm f/11 IS STM MRP: ₹96 495.00/U incl. of all taxes		RF800mm f/5.6L IS USM MRP: ₹1 599 995.00/U incl. of all taxes
	RF1200mm f/8L IS USM MRP: ₹1 899 995.00/U incl. of all taxes				

RF-S LENSES

	RF-S18-45mm f/4.5-6.3 IS STM MRP: ₹28 995.00/U incl. of all taxes		RF-S18-150mm f/3.5-6.3 IS STM MRP: ₹45 995.00/U incl. of all taxes		New RF-S55-210mm f/5-7.1 IS STM MRP: ₹31 995.00/U incl. of all taxes
--	---	---	--	---	--

Designed specially for APS-C RF Mount Cameras but overall compatible with EOS R Series cameras

VR LENS

	RF5.2mm f/2.8L Dual Fisheye MRP: ₹179 995.00/U incl. of all taxes
--	---

Compatible with EOS R5 and EOS R5 C

EXTENDERS (Tele Converter)

	Extender RF1.4x (Tele Converter) MRP: ₹46 995.00/U incl. of all taxes		Extender RF2x (Tele Converter) MRP: ₹55 995.00/U incl. of all taxes
---	---	---	---

All prices are subject to change. For latest prices, please visit in.canon and checkout the relevant product section. More range of RF Lenses available. For more details, visit in.canon. EMI options available with Bajaj Finance | HDFC Bank | IDFC First Bank | Pine Labs. EMI finance is at sole discretion of Financier/Bank/Service Provider to customers. EMI available on select models. To know detailed T&C of EMI, please visit: <https://in.canon/en/consumer/web/emi-cashback-offers>. All images and effects are simulated. Actual image may vary.

LENSES



Photo Credit: Ajay Ben
Captured on EOS -1DX Mark III, EF 16-35mm f/4LIS USM



EF50mm f/1.4 USM
MRP: ₹ 37 995.00/U
incl. of all taxes



EF100mm f/2.8L Macro IS USM
MRP: ₹ 84 995.00/U
incl. of all taxes



EF85mm f/1.4L IS USM
MRP: ₹ 164 995.00/U
incl. of all taxes



EF24-70mm f/2.8L II USM
MRP: ₹ 184 995.00/U
incl. of all taxes



EF70-200mm f/2.8L IS III USM
MRP: ₹ 208 995.00/U
incl. of all taxes



EF16-35mm f/2.8L III USM
MRP: ₹ 208 995.00/U
incl. of all taxes

MOUNT ADAPTERS

Compatibility for EF & EF-S Lenses with EOS R Series Camera



Mount Adapter
EF-EOS R
MRP: ₹ 7 995.00/U
incl. of all taxes



Control Ring Mount Adapter
EF-EOS R
MRP: ₹ 15 995.00/U
incl. of all taxes

More range of EF Lenses available. For more details, visit [in.canon](https://in.canon/en/consumer/web/emi-cashback-offers). All prices are subject to change. For latest prices, please visit [in.canon](https://in.canon/en/consumer/web/emi-cashback-offers) and check out the relevant product section. All images and effects are simulated. Actual images may vary. EMI options available with Bajaj Finance | HDFC Bank | IDFC First Bank | Pine Labs. EMI finance is at sole discretion of Financier/Bank/Service Provider to customers. EMI available on select models. To know detailed T&C of EMI, please visit: <https://in.canon/en/consumer/web/emi-cashback-offers>

ACCESSORIES

SPEEDLITES

Canon Speedlites feature advanced technologies to reduce power consumption and control heat. With Wi-Fi, you can even remotely trigger groups of compatible flashes that are placed behind obstructions. Our flagship flashes also offer weather sealing and ruggedness that match our professional DSLR cameras.



SPEEDLITE 600EX II-RT

MRP: ₹35 995.00/U
incl. of all taxes



SPEEDLITE 470EX-AI

MRP: ₹28 995.00/U
incl. of all taxes



SPEEDLITE 430EX III-RT

MRP: ₹21 650.00/U
incl. of all taxes



SPEEDLITE EL-100

MRP: ₹14 900.00/U
incl. of all taxes

BATTERY & BATTERY CHARGER COMPATIBILITY

Canon original Batteries and Battery Chargers give you top-of-the-line performance and Battery life to keep shooting all day. Additionally, our Batteries are built of quality material that give more charge cycles and the best performance to your equipment.

BATTERY LP-E6NH MRP: ₹ 7 695.00/U incl. of all taxes	BATTERY LP-E12 MRP: ₹ 2 915.00/U incl. of all taxes	BATTERY LP-E10 MRP: ₹ 2 395.00/U incl. of all taxes	BATTERY LP-E17 MRP: ₹ 3 095.00/U incl. of all taxes	BATTERY LP-E19 MRP: ₹ 12 495.00/U incl. of all taxes	BATTERY NB-6LH MRP: ₹ 2 095.00/U incl. of all taxes	BATTERY NB-13L MRP: ₹ 2 555.00/U incl. of all taxes	BATTERY NB-11LH MRP: ₹ 2 095.00/U incl. of all taxes
CHARGER LC-E6E MRP: ₹ 3 295.00/U incl. of all taxes	CHARGER LC-E12E MRP: ₹ 2 970.00/U incl. of all taxes	CHARGER LC-E10E MRP: ₹ 2 490.00/U incl. of all taxes	CHARGER LC-E17E MRP: ₹ 3 495.00/U incl. of all taxes	CHARGER LC-E19 MRP: ₹ 28 995.00/U incl. of all taxes	CHARGER CB-2LYE MRP: ₹ 3 495.00/U incl. of all taxes	CHARGER CB-2LHE MRP: ₹ 3 495.00/U incl. of all taxes	CHARGER CB-2LFE MRP: ₹ 3 495.00/U incl. of all taxes
EOS R5 EOS R5 C EOS R6 EOS R EOS R7 EOS 5D Mark IV EOS 6D Mark II EOS 90D EOS 80D	EOS M50 Mark II EOS M200 PowerShot SX70 HS	EOS 1500D EOS 3000D	EOS RP EOS R10 EOS M6 Mark II EOS 200D II	EOS-1D X Mark III EOS R3	SX Series (610 / 710 / 530 / 540)	PowerShot G Series (5X / 5X Mark II / 7X / 9X / 1X Mark III / 9X MarkII / 7X MarkII / 7X MarkIII PowerShot SX Series (620 / 720 / 730 / 740)	IXUS Series (265 / 175 / 180 / 185 / 190 / 285) PowerShot SX Series (410 / 420 / 430)

ELECTRONIC VIEWFINDER

EVF-DC2
MRP: ₹ 15 995.00/U
incl. of all taxes



BATTERY GRIP WIRELESS FILE TRANSFER

Canon original Battery Grips give unmatched performance and the same level of weather sealing as the body they are designed for.

BG-E22 Compatible with: EOS R MRP: ₹ 23 895.00/U incl. of all taxes	BG-R10 Compatible with: EOS R5 & EOS R6 MRP: ₹ 22 495.00/U incl. of all taxes	BG-E20 Compatible with: EOS 5D Mark IV Series MRP: ₹ 19 995.00/U incl. of all taxes	BG-E21 Compatible with: EOS 6D Mark II Series MRP: ₹ 11 995.00/U incl. of all taxes	BG-E14 Compatible with: EOS 80D Series MRP: ₹ 10 995.00/U incl. of all taxes	WFT-R10 Compatible with: EOS R5 & EOS R5 C MRP: ₹ 79 995.00/U incl. of all taxes
---	---	---	---	--	--

Other range also available in EOS lenses and accessories. For more details, visit [in.canon](https://in.canon/en/consumer/web/emi-cashback-offers). All prices are subject to change. For latest prices, please visit [in.canon](https://in.canon/en/consumer/web/emi-cashback-offers) and check out the relevant product section. All images and effects are simulated. Actual images may vary. EMI options available with Bajaj Finance | HDFC Bank | IDFC First Bank | Pine Labs. EMI finance is at sole discretion of Financier/Bank/Service Provider to customers. EMI available on select models. To know detailed T&C of EMI, please visit: <https://in.canon/en/consumer/web/emi-cashback-offers>

SHOOT STREAM SHARE



New XA65/XA60

XA75/XA70 **New**

PROFESSIONAL VIDEO CAMERAS



New

4K
UHD

XA75/XA70

- 4K UHD 25P & Advance Full HD Quality
- 1.0 Type CMOS Sensor
- 4K Supporting 15x Optical Zoom Lens
- XF-AVC & MP4 Recording Formats
- 25.5 mm Ultra-Wide-angle view
- Dual Pixel CMOS AF & Touch Tracking
- High Brightness/High Definition 8.9 cm LCD
- 9 Blade IRIS Diaphragm for beautiful bokeh
- 5 AXIS Image Stabilizer
- Type C USB for Video Class (UVC) Support
- Accessory Shoe, HDMI Terminal, Dual Type-C port & 3G SDI terminal (only in XA75)

XA75 MRP: ₹ 210 995.00/U incl. of all taxes

XA70 MRP: ₹ 184 995.00/U incl. of all taxes



New

4K
UHD

XA65/XA60

Special Offer*

on XA65/XA60
Battery+Charger+Camera Bag

- 4K UHD 25P
- 4K Compatible 15x Optical Zoom Lens
- XF-AVC & MP4 Recording Formats
- 5 AXIS Image Stabilizer
- High Brightness/High Definition 8.9 cm LCD
- Type C USB for Video Class (UVC) Support
- Accessory Shoe, HDMI Terminal, Dual Type-C port & 3G SDI terminal (only in XA65)

XA65 MRP: ₹ 172 995.00/U incl. of all taxes

XA60 MRP: ₹ 114 995.00/U incl. of all taxes



WiFi
CERTIFIED

4K
UHD

XF605

Special Offer*

on XF605
Camera Bag

- 1.0 Type CMOS Sensor & DIGIC DV7
- 4K 4:2:2 10 Bit
- 4K Compatible 15x Optical L IS Zoom Lens
- Eye AF/Head Detection AF
- EVF/LCD/HDMI/SDI Simultaneous Output
- IP Streaming

XF605 MRP: ₹ 475 995.00/U incl. of all taxes



4K
UHD

XA55/XA50

Special Offer*

on XA55/XA50
Battery+Charger+Camera Bag

- 4K UHD 25p & Advanced Full HD Quality
- 1.0 Type CMOS Sensor
- 4K Supporting 15x Optical Zoom Lens
- 9-Blade Iris Diaphragm
- 25.5mm Ultra-wide Angle
- Dual Pixel CMOS AF
- Touch AF & FACE Detection AF
- Dual Pixel Focus Guide
- Five Axis Image Stabilisation
- Accessory Shoe, 3G-SDI Terminal (Only in XA55)

XA55 MRP: ₹ 165 995.00/U incl. of all taxes

XA50 MRP: ₹ 145 995.00/U incl. of all taxes



4K
UHD

XA45/XA40

Special Offer*

on XA45/XA40
Battery+Charger+Camera Bag

- 4K UHD 25p & Advanced Full HD Quality
- 4K Compatible 20x Optical Zoom Lens
- Five Axis Image Stabilisation
- 8-blade Iris Diaphragm
- Accessory Shoe, 3G-SDI Terminal (Only in XA45)

XA45 MRP: ₹ 175 995.00/U incl. of all taxes

XA40 MRP: ₹ 114 995.00/U incl. of all taxes



Special Offer*

on XA15/XA11
Battery+Charger+Camera Bag

- 20x Optical Zoom (26.8mm, f/1.8 – 576mm, f/2.8)
- 5-axis Image Stabilisation
- Full HD 50p, AVCHD/MP4
- HD-SDI Terminals (Only in XA15)

XA15 MRP: ₹ 170 495.00/U incl. of all taxes

XA11 MRP: ₹ 96 795.00/U incl. of all taxes

*Offer valid till stocks last.

Camera bag available with all PRO DV models. All images and effects are simulated. Actual images may vary. EMI options available on select video and cinema cameras. EMI options available with Bajaj Finance | HDFC Bank | IDFC First Bank | Pine Labs. EMI finance is at sole discretion of Financier/Bank/Service Provider to customers. EMI available on select models. All prices are subject to change. For latest prices, please visit [in.canon](https://in.canon/en/consumer/web/emi-cashback-offers) and check out the relevant product section.

To know detailed T&C of EMI, please visit: <https://in.canon/en/consumer/web/emi-cashback-offers>.

PRESENTING THE NEW EOS R5C



8K
60 FPS 12-BIT
CINEMA RAW LIGHT



**INTERNAL COOLING
SYSTEM** FOR CONTINUOUS
RECORDING

45 MP
FULL-FRAME
CMOS SENSOR

COMPACT
DUST-RESISTANT
MOISTURE-RESISTANT

- 45MP Full-frame CMOS Sensor
- 8K/60P RAW Internal Recording with Dual Card Slots
- New Internal Fan Cooling Unit for Non-stop Video Recording
- 4K/120P in 4:2:2, 10-bit Resolution, C-log 3, HDR Support with HLG and PQ Formats

8K

RAW
CINEMA

Dual Pixel
CMOS **AF**

45.0
CMOS

HDR

TIMECODE
TERMINAL

EOS R5C (Body Only)

MRP: ₹439 995.00/U incl. of all taxes

Special Offer*

on EOS R5C
512GB CF Express Card
+ Card Reader

*Offer valid till stocks last.

All prices are subject to change. For latest prices, please visit [in.canon](https://www.canon.com) and check out the relevant product section. EMI options available with Bajaj Finance | HDFC Bank | IDFC First Bank | Pine Labs. EMI finance is at sole discretion of Financier/Bank/Service Provider to customers. EMI available on select models.

CINEMA EOS CAMERAS



5.9K **XF-AVC** **HDR**
Full Frame Sensor 4K XF-AVC (4:2:2) 10-bit

MRP: ₹ 1 345 990.00/U
incl. of all taxes

EOS C500 Mark II (Body Only)

- 5.9K Full Frame CMOS Sensor
- 4K at 50p/60p with 4:2:2 Sampling
- Built-in Cinema RAW Light Recording on CF Express Card
- Dual Pixel CMOS AF with Dual Pixel Focus Guide
- Supports HLG, PQ, Log2 & Log3 Colour Science for Dynamic Range



4K **DGO**
120p Dual Gain Output

MRP: ₹ 1 085 000.00/U
incl. of all taxes

EOS C300 Mark III (Body Only)

- Up to 16+ Stops of DYNAMIC RANGE with New DGO Sensor
- 4K @120fps + 2K Crop @180fps
- Canon LOG 2, 3 & HDR (PQ & HLG) Colour Science
- Internal Cinema RAW Light & XF-AVC ALL-I / Long GOP Recording
- Dual XLR & 12G-SDI Terminal

Special Offer*

on EOS C500 Mark II & EOS C300 Mark III
512GB CF Express Card + Card Reader + Camera Bag



Mount Adapter EF-EOS R 0.71x¹

4K
120p
DGO
Dual Gain Output

EOS C70 (Body Only)

New Cinema EOS Design with an RF Mount + EF Mount (with a Mount Adapter)

- Up to 16+ Stops of DYNAMIC RANGE with New DGO Sensor
- 4K @120p + 2K (Crop) @180p
- 4:2:2 10 Bit Colour Sampling + Canon LOG 2, 3 & HDR Colour Science
- XF AVC, MP4 + Internal Cinema RAW Light Recording Format (with New Firmware Update)
- Built-in TC Port + Dual Mini XLR Port

MRP: ₹ 569 995.00/U incl. of all taxes

Special Offer*

on EOS C70
Camera Bag

ACCESSORIES

MODEL	COMPATIBLE MODELS
BATTERY PACK	
BATTERY PACK BP-820	XA35 / XA30 / XA25 / XA20/ XA10 / HFG30 / HFG25 / HGF20/ XA50/55 / XA40/45 / XA11/15 / XA65/60 / XA75/70
BATTERY PACK BP-828	XA405 / XA400 / XA35 / XA30 / XA25 / XA20/ XA15/ XA11 / XA10 / HFG30/HFG25/HFG20 / XA50/55 / XA40/45 / XA65/60 / XA75/70
BATTERY PACK BP-955	EOS C500 / EOS C300 / EOS C100 Mark II / EOS C100 / XF305 / XF300 / XF205 / XF200 / XF105
BATTERY PACK BP-975	EOS C500 / EOS C300 / EOS C100 Mark II / EOS C100 / XF305 / XF300 / XF205 / XF200 / XF105
BATTERY PACK BP-A30	EOS C300 Mark II / EOS C300 Mark II PL / EOS C200 / EOS C500 Mark II/ XF 705/EOS C300 MK III/EOS C70
BATTERY PACK BP-A60	EOS C300 Mark II / EOS C300 Mark II PL / EOS C200 / EOS C500 Mark II/ XF 705/EOS C300 MK III/EOS C70
BATTERY CHARGER	
BATTERY CHARGER CG-800	XA35 / XA30 / XA25 / XA20/ HFG30 / HFG25 / BP-800 Series / XA11 / XA15 / XA40/45 / XA50/55
BATTERY CHARGER CG-A10 POWER	EOS C300 Mark II / EOS C300 Mark II PL with Double Slots / C200 / EOS C500 Mark II/ XF705/EOS C300 MK III/EOS C70
BATTERY CHARGER CG-A20	EOS C300 Mark II / EOS C200 / EOS C500 Mark II/ XF705/EOS C300 MK III/EOS C70
LP-E6NH	EOS R5 C
LC- E6E	EOS R5 C
AC ADAPTER	
AC ADAPTER CA-935	EOS C500 / EOS C300 / EOS C100 / XF205 / XF200
AC ADAPTER CA-946	XF300 / XF305 / XF205 / XF200 / XF105 / XF100 / XC15 / XF400 / XF405
COMPACT POWER ADAPTER CA-A10	EOS C300 Mark II / EOS C300 Mark II PL / C200
POWER ADAPTER CA-570E	XA35 / XA30 / XC10 / XA25 / XA20/ HFG30 / HFG25 / XA11 / XA15 / XA40/45
DR-E6C DC COUPLER	EOS R5 C
USB TYPE-C POWER ADAPTER PD-E1	EOS R5 C / EOS R / XA65/60 / XA75/70
REMOTE CONTROLLER	
REMOTE CONTROLLER RC-V100	EOS C700 / EOS C500 MK II / EOS C300 MK III/EOS C70/ EOS C300 Mark II / EOS C300 / EOS C100 Mark II / EOS C100 / EOS C500 Mark II / XF305/ XF300 / XF205 / XF200 / XF705 / XA 40/45 / XA50/55
WIRELESS CONTROLLER WL-D89	XA35 / XA30 / XA25 / XA20 / XA50/55 / HFG30 / HFG25 / HF M506 / HF M56 / HF M52

*Offer valid till stocks last.

¹ R 0.71x Mount Adapter sold separately. All images and effects are simulated. Actual images may vary. All prices are subject to change. For latest prices, please visit [in.canon](https://in.canon.com/en/consumer/web/emi-cashback-offers) and check out the relevant product section. EMI options available with Bajaj Finance | HDFC Bank | IDFC First Bank | Pine Labs. EMI finance is at sole discretion of Financier/Bank/Service Provider to customers. EMI available on select models. To know detailed T&C of EMI, please visit: <https://in.canon.com/en/consumer/web/emi-cashback-offers>



EOS R SYSTEM



Canon India Pvt. Ltd.

Corporate Office: 7th Floor,
Tower B, Building No. 5, DLF Epitome,
DLF Phase III, Gurugram – 122002

For Canon Service Centres,

Call: 1860 180 3366 or 1800 208 3366 or

Visit: <http://bit.ly/canonservicenetwork>

Canon Master Service Centres:

Delhi, Kolkata, Mumbai, Bengaluru, Chennai and Kochi

Canon Authorised Service Franchisee:

Ahmedabad, Bhubaneswar, Chennai, Guwahati,

Hyderabad, Indore, Jaipur, Ludhiana, Patna and Pune

For other details, visit: in.canon

Follow **CANON India** on   

canonindia_official 

Dealer's Stamp
2023V1

All images and effects are simulated. Actual images may vary. Models and specifications are subject to change without prior notification. Prices mentioned for all products are MRP (inclusive of all taxes). Errors and omissions expected. Wi-Fi is a trademark of respective company. Canon is a registered trademark of Canon Inc. Offer valid till stocks last. Wi-Fi support varies by region and device type. Uploading of still images/videos to any website directly from Wi-Fi camera is subject to registration on Canon Image Gateway. Transfer of still images/videos to iPhone/iPad/Android devices from Wi-Fi camera is subject to download of free app, Canon Camera Connect. Both NFC and Wi-Fi can be used to shoot remotely from an Android device, or even upload directly to social networking sites. Manual explains file transfer between camera and smartphone. Offer period at Canon India's discretion. T&C apply. **EMI options available with* Bajaj Finance | HDFC Bank | IDFC First Bank | Pine Labs.** *EMI finance is at sole discretion of Financer/Bank/Service Provider to customer. EMI options are available at select stores. To know detailed T&C of EMI, please visit: <https://in.canon/en/consumers/web/emi-cashback-offers>