



Canon

Delighting You Always

# LENS CATALOGUE





**EOS R3**  
**RF24-70mm f/2.8L IS USM**  
Photo Credit: Raja Jain

# EOS R SYSTEM: REIMAGINE OPTICAL EXCELLENCE

Introducing the next evolution of EOS. It's a whole new system with a game-changing RF Lens Mount that delivers optical excellence today and incredible possibilities for future designs. The EOS R full-frame mirrorless system provides gorgeous results with native RF Lenses, together with 3 optional mount adapters that ensure seamless compatibility with your EF and EF-S Lenses. With advanced features and compact designs, the brand new EOS R System is designed to take today's visual storytellers into tomorrow.

Marking a new chapter in the history of EOS, the EOS R System is built for image-makers who demand high-performance capture, full-frame sensor and excellent ergonomics. A 54mm diameter lens mount enables RF Lenses to have large rear elements, while a mirrorless design brings them closer to the sensor for bright, sharp and compact lens designs. A 12-pin electronic connection delivers fast communication between the camera and the lens, facilitating a versatile and powerful system. Plus, with a variety of mount adapter options providing compatibility with EF and EF-S Lenses, it's easy to incorporate your EOS R System into an EOS System and expand your creative opportunities.

# A NEW STANDARD IN OPTICAL IMAGE QUALITY

## New RF Mount

At the heart of the EOS R System lies the amazing RF Mount. It's newly designed to deliver the ideal combination of speed, durability and flexibility in optical design for excellent performance and future system expansion, plus compatibility with EF and EF-S Lenses\*.



### 54mm Large Diameter and Short Back Focus

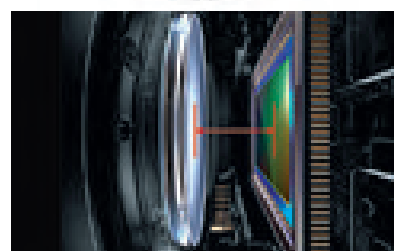
The large diameter and decreased distance between the rear lens element and sensor enable a compelling combination of image quality, performance and compact lens design. The new RF mount retains the same, large 54mm diameter as the current Canon EF Mount, and thanks to the mirrorless structure of EOS R System cameras, the rear lens element can be much closer to the image plane. This combination opens up a number of possibilities. The rear element of RF Lenses can be larger in diameter, improving image quality at the corners and outer edges of the frame. Larger rear elements mean front elements can be smaller, meaning lesser refraction and bending of light rays within the lens, enhancing optical performance. Most importantly, the EOS R System opens the door to the future. It unlocks more freedom and flexibility in lens designs, allowing faster lenses with increased optical performance in more compact forms than before.

## RF MOUNT



### Data Transmission Through 12-pin Electrodes

A 12-pin connection between the camera and lens means communication at a higher speed with larger amount of data transfer, enabling incredibly fast autofocus (AF), high image stabilisation (IS) and image optimisation. It's a system designed to expedite operations that's ready for future expansions.



### 20mm Flange Focal Distance

The RF Mount is mounted just 20mm from the image sensor. This provides flexibility for future lens designs and the durability needed for professional, real-world operations, even when using super telephoto lenses.



\* Optional Mount Adapters are required when using EF/EF-S Lenses with an EOS R System Camera



RF800mm f/11 IS STM  
Photo Credit: Shivang Mehta

# BEYOND FULL COMPATIBILITY

## Discover New Possibilities with EF/EF-S Lenses

Mount adapters deliver seamless connections between the EOS R System Cameras and EF/EF-S Lenses with all functions intact. Offering L-Series-level weather and dust sealing, the Mount Adapters are even compatible with EF Extenders such as the Extender EF 1.4x III to extend your camera's optical reach. With an entire line-up of EF and EF-S Lenses at your disposal, these mount adapters ensure endless creative possibilities for the EOS R System Cameras.

## Additional Control with EF/EF-S Lenses

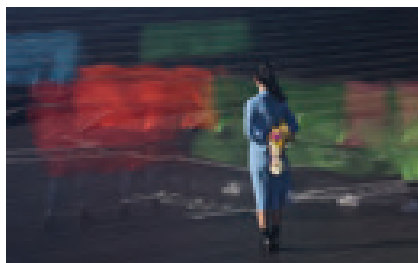
Take full advantage of the EOS System by using any EF/EF-S Lens with the EOS R System Cameras by way of three optional mount adapters, including one featuring a customisable control ring and another allowing you to drop in a circular polarising or variable ND Filter.





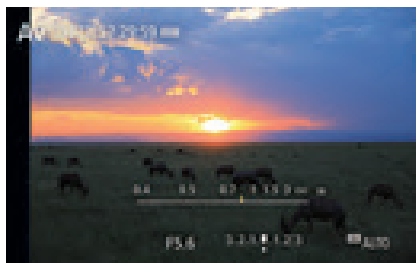
RF15-35mm f/2.8L IS USM  
Photo Credit: Ravi Dhingra

# NEW LENS DESIGNS WITH STELLAR IMAGE QUALITY AMAZING PERFORMANCE



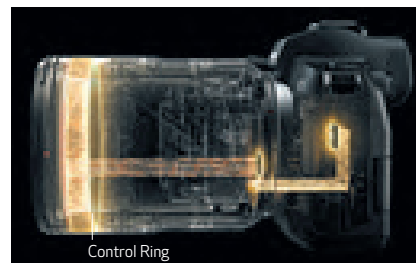
## Optical Image Stabilisation

Designed specifically for the EOS R System, select RF Lenses feature Optical Image Stabilisation technology that's designed to work in conjunction with the EOS R System Cameras. With faster data sharing, the RF Lenses offer enhanced image stabilisation as well as image quality optimisation when paired with any of the EOS R System Cameras.



## Lens Information Display

Another helpful feature, the EOS R System Cameras can display lens information right in the viewfinder, making it easy to confirm the settings without looking away from the subject at hand.



## Control Ring

Almost all RF Lenses incorporate a control ring on the lens barrel that can directly adjust numerous settings including shutter speed, aperture, exposure compensation and more. Located within the lens and effectively adding a third dial to the EOS R System Cameras' main dial and quick control dial, the control ring has a tactile, easily distinguished surface and features a clicking mechanism that provides tangible feedback for confident use, while looking through the viewfinder.



## ULTRA-WIDE/WIDE-ANGLE ZOOM LENSES

## RF14-35mm f/4L IS USM



Ultra-wide coverage lens that changes the way you see the world, making the ordinary visuals extraordinary while shooting videos, landscapes, architecture, interiors, travel or creative perspectives that leverage lens effects.

MRP

**₹ 158 995.00/U**

inclusive of all taxes

## RF15-35mm f/2.8L IS USM



The RF15-35mm f/2.8L IS USM is a bright ultra-wide zoom lens with a constant f/2.8 maximum aperture at any focal length, perfect for shooting landscapes, architecture, interiors and more.

MRP

**₹ 225 995.00/U**

inclusive of all taxes

## RF15-30mm f/4.5-6.3 IS STM



Get immersive shots with ultra-wide angle zoom lens to get sharp handheld stabilized low-light shots as well as incredible close-ups with a magnification of up to 0.52x.

MRP

**₹ 52 495.00/U**

inclusive of all taxes

## ULTRA-WIDE LENSES

## RF16mm f/2.8 STM



An engineering marvel, this ultra wide-angle lens features a large aperture at a price point that is affordable for any professional. The lens retains performance in a very compact form factor.

MRP

**₹ 27 995.00/U**

inclusive of all taxes

## STANDARD/MEDIUM TELEPHOTO LENSES

## RF24-70mm f/2.8L IS USM



Part of the highly sought-after RF f/2.8 zoom trinity series, the RF24-70mm f/2.8L IS USM offers impeccable image quality in a lightweight body. With a bright f/2.8 aperture at any focal length in its zoom range, this lens is perfect for a varied genres of photography.

MRP

**₹ 225 995.00/U**

inclusive of all taxes

## RF28-70mm f/2L USM



The RF28-70mm f/2L USM features a maximum aperture of f/2, offering unparalleled performance throughout its zoom range. With L Series optics, it offers the flexibility and performance of a handful of fixed focal length lenses.

MRP

**₹ 291 995.00/U**

inclusive of all taxes

## RF24-105mm f/4L IS USM



The RF24-105mm f/4L IS USM is versatile with its broad zoom range and constant f/4 maximum aperture, making it ideal for landscapes, portraits and much more. This is the first L Series Lens to feature Canon's Nano USM for fast and quiet AF in moving shooting.

MRP

**₹ 118 995.00/U**

inclusive of all taxes

## RF24-105mm f/4-7.1 IS STM



Designed not only to be light and compact, the RF24-105mm f/4-7.1 IS STM is also a very versatile lens that even have macro function and would not weigh you down as you shoot to explore the creative possibilities.

MRP

**₹ 37 995.00/U**

inclusive of all taxes

## RF50mm f/1.8 STM



A high-quality yet affordable fixed focal length lens with a large aperture of f/1.8 that delivers amazingly soft bokeh. Weighing only approx. 160g, the lens design is compact and lightweight, making it highly portable and versatile. perfect for food, snapshots and portrait photography.

MRP

**₹ 18 995.00/U**

inclusive of all taxes



## STANDARD/MEDIUM TELEPHOTO LENS

## RF50mm f/1.2L USM



This Lens delivers gorgeous images, especially portraits. With 10 aperture blades and offering the widest aperture available in the RF line-up, its f/1.2 aperture means amazing performance in low light and beautiful detailed images with evocative background blur.

MRP  
₹ **228 995.00/U**  
inclusive of all taxes

## RF85mm f/1.2L USM



The RF85mm f/1.2L USM is an ultra-fast prime lens that is great for low-light situations. It features an impressive 9-blade circular aperture with a maximum aperture of f/1.2, producing superb bokeh for stunning portraits.

MRP  
₹ **262 995.00/U**  
inclusive of all taxes

## RF85mm f/1.2L USM DS

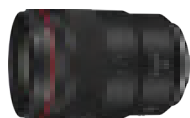


The highest optical performance lens at maximum aperture among Canon interchangeable 85mm lenses. The Defocus Smoothing (DS) function ensures extremely smooth rendering of out-of-focus regions, producing soft and natural bokeh with delightful highlights and even fall-offs.

MRP  
₹ **299 995.00/U**  
inclusive of all taxes

## MEDIUM TELEPHOTO LENS

## RF135mm f/1.8L IS USM

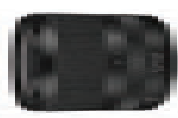


An ideal for portraits, keeping the right distance for communication with the subject but not too far away like with telephoto lenses. The mid-telephoto compression effect and greater bokeh enable beautiful portraits with a sense of perspective.

MRP  
₹ **219 995.00/U**  
inclusive of all taxes

## TELEPHOTO/SUPER TELEPHOTO LENSES

## RF24-240mm f/4-6.3 IS USM



Offering versatility in a single lens with 10x optical zoom in a compact body, making it superb for travel and outdoor usage. Driven by the tiny Nano USM to achieve superb speed when focusing, while maintaining quiet and smooth transition, even for videos.

MRP  
₹ **83 495.00/U**  
inclusive of all taxes

## RF70-200mm f/2.8L IS USM



A remarkably fast telephoto zoom lens, it brings consistent high image quality across its entire focal length with its large f/2.8 aperture. The Rugged built and compact design makes it ideal for sports, portrait, wedding and wildlife photography.

MRP  
₹ **262 995.00/U**  
inclusive of all taxes

## RF70-200mm f/4L IS USM



RF70-200mm f/4L IS USM measures less than 12cm and weighs only approx. 695g, making its size similar to a standard zoom lens. However, this lens packs a high resolving power to deliver stunning quality across the entire focal range. The lens's image stabilisation offers stability even while shooting dark scenes.

MRP  
₹ **169 995.00/U**  
inclusive of all taxes

## RF100-400mm f/5.6-8 IS USM



Significantly lightweight at 635g and native 5.5-stop image stabilisation that can be further expanded to 6 steps when paired with a camera equipped with In-Body IS. Additionally, this lens works perfectly with both the Extenders RF 1.4x and RF 2x, making it a perfect lens for wildlife photography.

MRP  
₹ **60 495.00/U**  
inclusive of all taxes

## RF100-500mm f/4.5-7.1L IS USM



The first super-telephoto zoom lens for the RF mount, the RF100-500mm f/4.5-7.1L IS USM is one of the most versatile RF optics for sports and wildlife photography. The lens's IS can dramatically reduce camera shake up to 5 stops. Autofocusing is provided by Nano USM motor for fast, precise and silent performance.

MRP  
₹ **277 995.00/U**  
inclusive of all taxes

## TELEPHOTO/SUPER TELEPHOTO LENSES

### RF600mm f/11 IS STM



Shooting close-ups of sports, birds, wildlife and other faraway things is what the RF600mm f/11 IS STM does best. Weighing less than 1 kg, with a compact, retractable design, it is easy to carry around and handle. With high-performance IS of up to 5 stops, image sharpness gets a huge boost even in handheld shooting.

MRP

**₹ 76 495.00/U**  
inclusive of all taxes

### RF800mm f/11 IS STM



One of the lightest super telephoto lenses, comes with up to 4 stops of image stabilisation to significantly reduce camera shake. The incredible portability and focal length open up new doors in wildlife photography and videography.

MRP

**₹ 96 495.00/U**  
inclusive of all taxes

### RF400mm f/2.8L IS USM



Designed for professionals in mind, this lens will surpass your expectations in every condition. A high-performance super-telephoto lens with class-leading image quality. Ideal for sports, action and wildlife photography where distance matters.

MRP

**₹ 1 169 995.00/U**  
inclusive of all taxes

### RF600mm f/4L IS USM



Designed for professionals who require top-notch capabilities and performance, this lens puts you right in the middle of the action. Ideal for sports and wildlife photography.

MRP

**₹ 1 249 995.00/U**  
inclusive of all taxes

### RF800mm f/5.6L IS USM



Crafted for those who desire a professional quality ultra-telephoto lens, the RF800mm f/5.6L IS USM is perfect for photographing subjects from a distance like wildlife and sports. Capable of up to 4.5 stops IS while weighing only approximately 3,140g.

MRP

**₹ 1 599 995.00/U**  
inclusive of all taxes

### RF1200mm f/8L IS USM



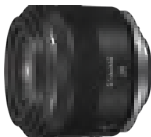
Weighing only at approximately 3,340g, the RF1200mm f/8L IS USM is unbelievably smaller and much lighter than its EF equivalent and packed with features like up to 4 Stops IS for that impeccable image quality a professional would expect.

MRP

**₹ 1 899 995.00/U**  
inclusive of all taxes

## MACRO LENSES

### RF24mm f/1.8 Macro IS STM



A compact wide-angle lens offering beautiful bokeh with its f/1.8 aperture even in low light and capture amazing close-ups with its 0.5x macro magnification.

MRP

**₹ 58 495.00/U**  
inclusive of all taxes

### RF35mm f/1.8 Macro IS STM



Compact, lightweight and easy to carry, this lens offers amazing versatility in a wide-angle macro lens. It has a 0.5x magnification ratio and a close focusing distance of 17cm with up to 5-stop image stabilisation for excellent handheld and low-light macro photography.

MRP

**₹ 45 995.00/U**  
inclusive of all taxes

### RF85mm f/2 Macro IS STM



RF 85mm f/2 MACRO IS STM provides stunning bokeh for beautiful background separation, combined with macro and IS capabilities. This portrait lens makes it handy for portrait and wedding photographers who want to quickly close in for detailed shots.

MRP

**₹ 54 495.00/U**  
inclusive of all taxes



## MACRO LENSES

## RF100mm f/2.8L Macro IS USM



The RF 100mm f/2.8L Macro IS USM is a professional macro lens with class-leading 1.4x magnification and a variable Spherical Aberration Control to adjust Bokeh, opening the creative horizon.

MRP  
₹ **136 995.00/U**  
inclusive of all taxes

## RF-S LENSES

## RF-S 18-45mm f/4.5-6.3 IS STM



Compact and featherweight design at only 130g, this lens is versatile across different genres with its focal length and image stabilisation of up to 6.5 stops when used with compatible cameras.

MRP  
₹ **28 995.00/U**  
inclusive of all taxes

## RF-S18-150mm f/3.5-6.3 IS STM



Engineered to deliver versatility through its focal length, 7 stops of image stabilisation with compatible cameras and magnification of up to 0.59x while maintaining a compact size.

MRP  
₹ **45 995.00/U**  
inclusive of all taxes

## RF EXTENDERS

## Extender RF 1.4x



Extends a super telephoto lens's focal length by 1.4x, so that an 800mm focal length, for example, becomes 1120mm. The extra reach makes it possible to get larger close-ups with the original camera resolution.

MRP  
₹ **46 995.00/U**  
inclusive of all taxes

## Extender RF 2x



Extends a super telephoto lens's focal length by 2x, so that an 800mm focal length, for example, becomes 1600mm. The extra reach makes it possible to get larger close-ups with the original camera resolution.

MRP  
₹ **55 995.00/U**  
inclusive of all taxes

## VR LENS



## RF5.2mm f/2.8L DUAL FISHEYE + EOS R5

RF5.2mm f/2.8L Dual Fisheye captures 180-degree 3-Dimensional (3D) stereoscopic visuals by using the parallax of the left and right fisheye lenses and excellent performance even in low-light situations. This design enables a single sensor to receive light from both lenses, simplifying the recording of Virtual Reality (VR) videos via EOS R5/R5C.

MRP (for Lens only)  
₹ **179 995.00/U**  
inclusive of all taxes

## VR LENS TECHNOLOGY



## Dual-lens Electro Magnetic Diaphragm (EMD)

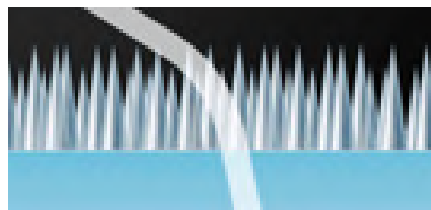
Both left and right lenses of the RF5.2mm f/2.8L Dual Fisheye feature EMD that controls exposure electronically.

The large aperture of the RF5.2mm f/2.8L Dual Fisheye provides excellent performance even in low-light situations.



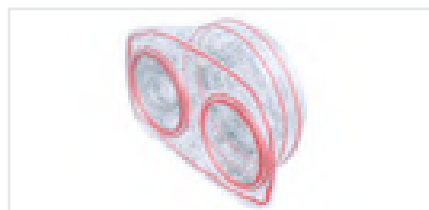
## ND Filters

The RF5.2mm f/2.8L Dual Fisheye is designed with a gelatin filter holder that allows Neutral Density (ND) filters to be used when shooting outdoors.



## SWC

Subwavelength Structure Coating (SWC) offers exceptional anti-reflection capability that effectively suppresses ghosting in backlit situations, especially during VR imaging.



## Dust &amp; Drip Resistance

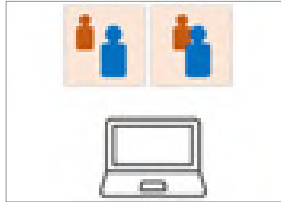
Sealings at all the crucial points of the lens provides a good dust and drip resistance for use in most outdoor conditions.

## How Virtual Reality Imaging Works



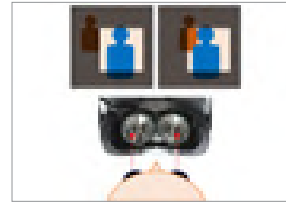
### Two Fisheye Lenses

Recording is done with parallax using two fisheye lenses on one sensor.



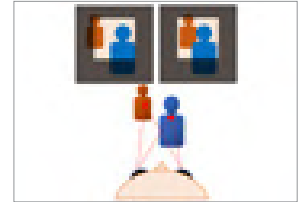
### Conversion

Through software, recordings are converted into equirectangular projections, a standard Virtual Reality format.



### Projected to HMD

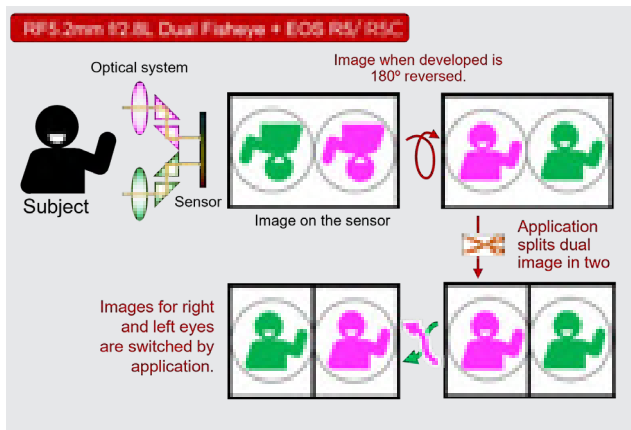
Cropped and converted recordings are projected into a head-mounted display (HMD) to simulate a human's vision.



### 3D Realism

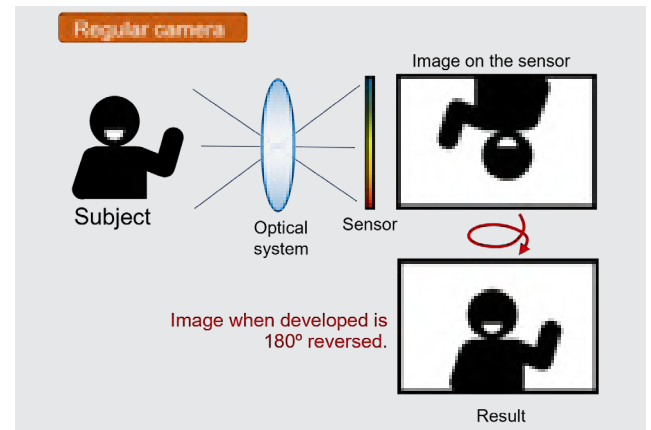
The recordings will appear 3-Dimensional (3D) when viewed individually by the left and right eye due to parallax effect.

## Mechanism of Virtual Reality Recording



### Single-Sensor Recording

When attached to the EOS R5 mirrorless camera, the RF5.2mm f/2.8L Dual Fisheye enables users to harness the camera's 8K recording capabilities to produce ultra-high-definition 8K 180-degree VR footage with just one camera on one sensor.



### Two Cameras No Longer Required

Conventional VR recording requires aligning of two cameras and syncing of camera positions, prior to shoot. Additional processes like colour matching and stitching are typically required as well after shooting. With the single-sensor recording capability of the RF5.2mm f/2.8L Dual Fisheye, such hassles are now eliminated.

## Software Integration for Post-Production

Software support allows for a more efficient and simplified workflow during post-production.

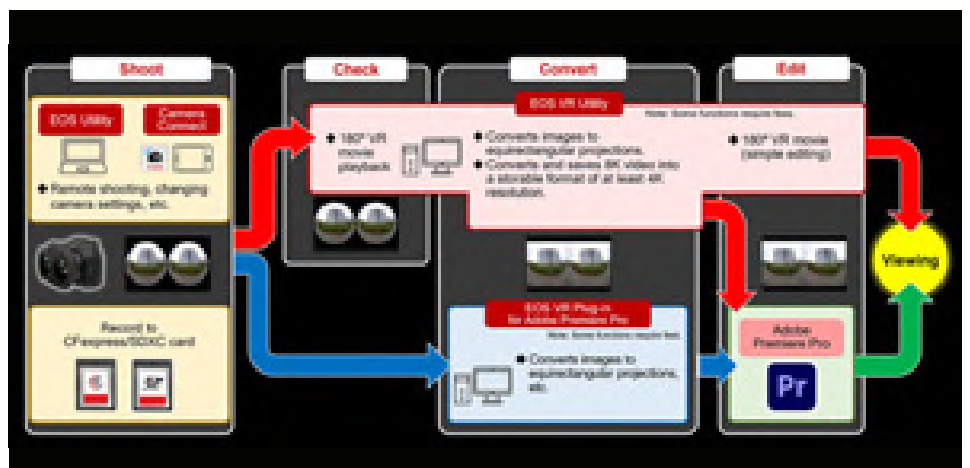
### EOS VR Utility\*

- A computer software application that lets users convert images into equirectangular projections (a standard VR image format) and perform simple editing on them.
- Supports toggling between images/footages shot by the left and right lenses. Also, supports toggling between circular fisheye and equirectangular displays.
- Supports image straightening/parallax correction for compatible lenses.
- Supports playback and basic cutting of 180-degree VR images on computer monitors.
- Videos recorded in 8K can be converted and saved in a different size, file specification, or format.
- LUTs (Lookup Tables) can be applied to videos recorded in Canon Log mode.
- Supports output to DPX (Digital Picture Exchange) and Apple ProRes for NLE (non-linear editing) purposes.

### EOS VR Plugin\* for Adobe Premiere Pro

- A computer software plugin for video creators who edit with Adobe Premiere Pro.
- Supports swapping the left and right images and converting images into equirectangular projections (a standard VR image format).
- Supports image straightening/parallax correction for compatible lenses.

\*subscription fee and/or payment required for features



# Canon EF Lenses

It is no surprise why Canon lenses are the world's preferred choice for photographers. Every creation since 1963 is the result of uncompromised dedication and commitment to innovation.

As we continue to achieve growth milestone every passing year, we feel this benchmark is more than just quantity. It is a proof of consistent quality and creativity centred on imaging, optics and revolutionising the development of stills, video and network mediums.

Since our conception, we have always been pushing the boundaries of speed and comfort as well as high image quality. Our range of EF Lenses spearheaded the photography industry with world's first technologies, such as the Ultrasonic Motor (USM), Image Stabiliser (IS) technology and a multilayered Diffractive Optical (DO) element.

Well ahead of the curve to exceed modern consumer demands, we proudly present the rich EF Lenses' lineup – from ultra-wide-angle 8mm focal length lens to an 800mm focal length super-telephoto lens and EF Cinema Series Lenses for video production.



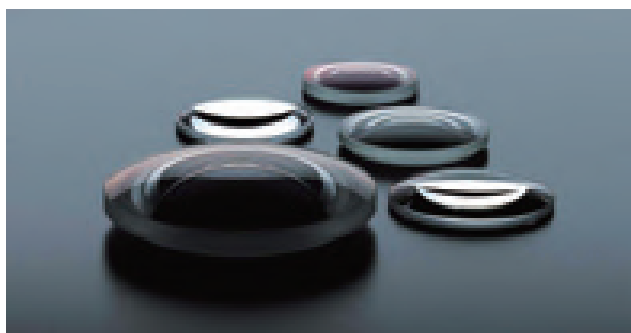
## Air Sphere Coating (ASC)

When light passes through an uncoated lens, approximately 5% is reflected back due to the difference in refractive index. This causes flare and ghosting, which affects the image quality.

Canon's Air Sphere Coating (ASC) is an anti-reflection innovation that combines vapour-deposited multi-coatings with an outermost layer that is ultra-low in refractive index to further eliminate light reflection.

## Aspherical Lenses

Canon developed aspherical surface which converges both central and peripheral light rays at a single focal point to ensure uniform sharpness and clarity over the whole image area. Now found in almost every EF Lens, aspherical lens elements are particularly useful for large-aperture and wide-angle lenses.



High-precision Aspherical Lenses

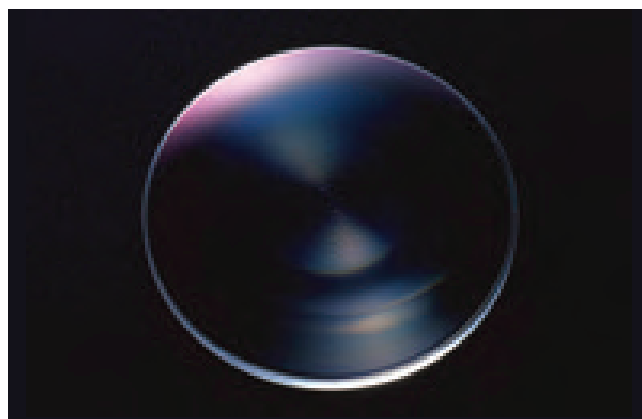
## Digital Lens Optimiser

Issues such as aberrations, diffraction and inadequate exposure due to the use of low-pass filter, often lead to optical image deterioration. Canon's groundbreaking Digital Lens Optimiser solves these problems by identifying the causative factors and changing them into mathematical functions (Optical Transfer Functions or OTF). It then applies the inverse functions that are carefully optimised and based on accurate data which makes all the necessary corrections, resulting in a significantly improved image.

## Diffraction Optics (DO)

Canon developed a first-of-its-kind technology that enables nearly all the light to pass through multiple diffractive optical (DO) elements. A renowned game-changer for photographers, this innovation reduces chromatic aberration while allowing the lens elements to be placed much closer together within the lens barrel.

Outdoor photography enthusiasts can now look forward to even higher image quality.



DO Lens

## Digital Electronic Control: EMD

Every EF Lens incorporates an EMD (electromagnetic diaphragm) which electronically controls the lens aperture diameter and is designed for use with EOS's fully electronic data transmission mount system. Control of the aperture diameter is carried out by an electrical pulse signal, which corresponds to a setting value, manually selected with the camera's electronic dial or automatically determined by the camera's micro computer.



## Dust and Drip Resistant, Fluorine Coating

Some Canon's lenses are prepared for harsh photography environments, featuring dust and drip proof structure with rubber sealing between the mount and the camera as well as sealing the focusing ring and the lens extension tube. Resistant rubber materials are applied even for the smallest parts, such as the switch panel and insert slot of the drop-in filter compartments. Fluorine-coated lenses also allow dirt on the lens to be wiped off easily. This ability to perform and operate under adverse conditions helps to address the needs of roving professional photographers and enthusiasts alike.

## Fluorite Lens

Fluorite is known for its low refractive index and ability to correct chromatic aberration. In 1969, Canon succeeded in synthesising fluorite crystals, which drastically improved image quality, achieving pin-sharp details throughout the whole image. It also significantly reduced the length of lenses.

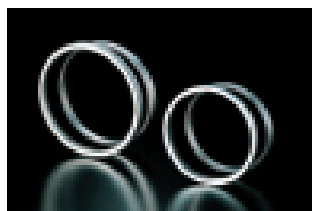


Natural fluorite (left) and artificial fluorite crystal (centre)

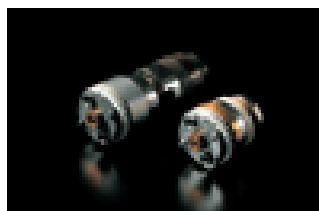
## Ring / Micro / Nano USM

USM (Ultrasonic Motor) drives the lens by transforming ultrasonic vibrations into rotational energy. Low-power and highly efficient, it enables focusing with close to no sound. There are 3 types: Ring, Micro and Nano USM.

The Ring USM is especially useful for driving large-diameter or super telephoto lenses and also allows for full-time manual focusing. The Micro USM is more affordable and can be used on a variety of lenses with no restrictions on lens diameter.

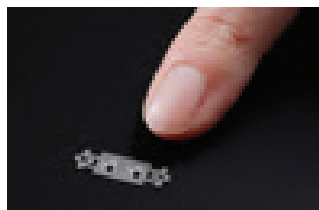
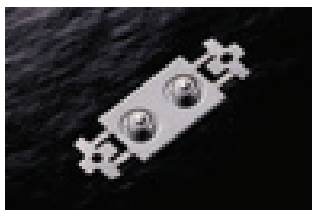


Ring USM



Micro USM and Micro USM II

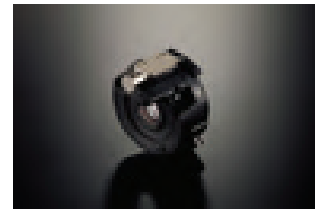
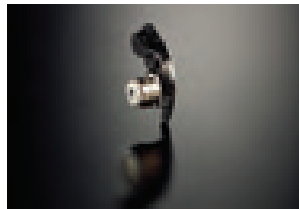
Nano USM is Canon's latest USM that not only realises a high-speed AF but also operates seamlessly in silence. Its main benefit lies in enabling quiet, smooth AF operation for both photo and movie-shooting. Its high speed AF is able to handle scenes with subjects that are moving at a fast speed as well as those with unpredictable movements.



## Stepping Motor (STM)

The STM (Stepping Motor) is an AF drive motor that can control its rotational operation, using the fluctuation of pulse signals.

Operating sound is also reduced for optimal video recording, using the 'STM + Lead Screw' unit to generate a large torque and enable silent and smooth AF drive on zoom lenses. The 'STM + Gear' unit is optimised as a drive motor for pancake lenses and others in the compact lenses' range.



## Subwavelength Structure Coating

The Subwavelength Structure Coating (SWC) technology reduces the differences between refraction indexes of air and glass to minimise internal reflections that cause ghosting and flare in images.

## UD Lens

In 1970, Canon developed Ultra-Low Dispersion (UD) glass to counter the high costs of fluorite. Two UD Lenses produce nearly the same result as one fluorite. Today, UD Lenses are used extensively for Canon's L-series Lenses.

## Super UD Lens

Successfully developed by Canon in 1993, these lenses reproduce the low refractive index and chromatic aberration correction characteristics of fluorite lenses.

## White Coating

The white coating on the entire lens barrel reflects sunlight to prevent the optical system from overheating, even when shooting under harsh and warm conditions.

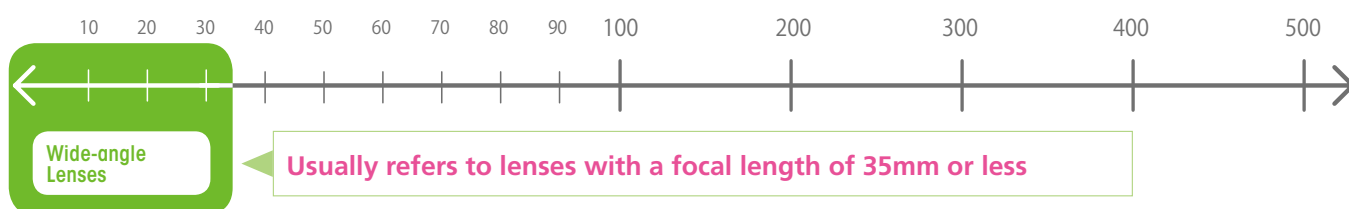
## Super Spectra Coating

Light reflection at the lens surface reduces the amount of light arriving at the camera sensor and increases the probability of image ghosting effect and flare.

To maximise the amount of light captured, thin film layers with different refraction indexes called Super Spectra Coating are applied to the lens surface to allow 99.9% transmission of light to the camera sensor. SSC also ensures a consistent colour balance across all EF Lenses resulting in clear and sharp images with colours just as faithful as the original subject.

## ULTRA-WIDE/WIDE-ANGLE LENSES

From creating surreal effects to getting utmost perspective from a small limited space, these lenses provide images that are all at once expressive as well as highly practical.



### EF8-15mm f/4L Fisheye USM



This groundbreaking zoom lens offers an astonishing 180-degree view of the world. Popular with travel, landscape, commercial, advertising and sports photography, it fulfils the creative possibility of shooting circular or breathtaking fisheye images.

MRP

**₹ 119 995.00/U**  
inclusive of all taxes

### EF-S10-18mm f/4.5-5.6 IS STM



Combining optical excellence with cutting-edge performance, this lens provides an ultra-wide angle of view in a compact and portable package. It also delivers reliable, speedy and quiet wide-angle performance, making it an ideal lens for everyday and travel photography, along with the video recording.

MRP

**₹ 23 995.00/U**  
inclusive of all taxes

### EF11-24mm f/4L USM



Ultra-wide zoom lens which delivers new photographic expressiveness, capturing high image quality across the entire image at all ranges. Its Subwavelength Structure Coating and Air Sphere Coating effectively minimise ghosting and flare. Also, layered with Fluorine Coating, dust and dirt on the lens surface can be quickly and easily removed.

MRP

**₹ 274 995.00/U**  
inclusive of all taxes

### EF16-35mm f/2.8L III USM



Well-suited for wide-angle shots, this large-diameter zoom lens is designed with two double-surface aspheric GMo lenses to deliver bright, quality images from the centre, right to the edge of the frame. Distortion and chromatic aberration are reduced with flaring and ghosting, suppressed by Subwavelength Structure Coating (SWC) & Air Sphere Coating (ASC).

MRP

**₹ 208 995.00/U**  
inclusive of all taxes

### EF16-35mm f/4L IS USM



The first IS-equipped wide angle zoom in EF full-size format achieves high image quality from the centre to the peripheral areas. Its 4-stop Image Stabiliser ensures clear, sharp and expansive images, making it great for travel and general use.

MRP

**₹ 132 995.00/U**  
inclusive of all taxes

### EF-S17-55mm f/2.8 IS USM



Versatile wide-angle lens. Large f/2.8 aperture throughout the zoom range and a 3-stop Image Stabiliser offer outstanding performance and framing flexibility under low light.

MRP

**₹ 78 995.00/U**  
inclusive of all taxes



## ULTRA-WIDE/WIDE-ANGLE LENSES

## EF-S18-55mm f/4-5.6 IS STM



Lightweight and compact, this zoom lens goes perfectly with APS-C sensors. Focal length ranges, covering angles of view common in travel and portrait photography. It is also equipped with the Stepping Motor Technology for quieter AF as well as 4-stop IS.

MRP  
₹ **15 595.00/U**  
inclusive of all taxes

## EF24mm f/1.4L II USM



Top-range wide-angle lens with bright aperture. 2 moulded glass aspheric lenses suppress field curvature and distortion. 2 UD Lenses correct lateral chromatic aberration, making it an ideal lens for landscape professionals.

MRP  
₹ **152 995.00/U**  
inclusive of all taxes

## EF-S24mm f/2.8 STM



Slim and lightweight, this is the first pancake-style EF-S Lens. Its aspheric lens achieves a high level of image quality from the periphery while its aperture mechanism uses a micro-stepping drive control for a quieter drive.

MRP  
₹ **11 995.00/U**  
inclusive of all taxes

## EF35mm f/1.4L II USM



Large-diameter fixed focal length lens with emphasis on details. This BR Lens corrects chromatic aberrations and works with the two aspherical lenses and a UD Lens to maintain sharp peripheral details.

MRP  
₹ **208 995.00/U**  
inclusive of all taxes

## STANDARD/MEDIUM TELEPHOTO LENSES

## EF24-70mm f/2.8L II USM



A high-performance large-aperture L standard zoom lens with a wide focal-length range. Magnification-type chromatic aberration at wider angles is corrected, thus achieving superior image quality. Fast yet silent autofocus, includes a full-time mechanical manual focus and a zoom lock.

MRP  
₹ **184 995.00/U**  
inclusive of all taxes

## EF24-105mm f/4L IS II USM



The EF24-105mm f/4L IS II USM is a versatile standard zoom lens, covering from wide-angle to mid-telephoto shots. Brightness is improved with GMo aspherical lenses; image stabilisation is enhanced up to 4-stops (CIPA standards) for sharper handheld shots. Ideal for professionals and skilled amateurs on the move.

MRP  
₹ **132 995.00/U**  
inclusive of all taxes

## EF-S18-135mm f/3.5-5.6 IS USM



Compatible with Canon EOS Series, this new kit lens is geared towards more immersive user experiences for photographers and enthusiasts alike. Features well-rounded zoom range flexibility and the first-of-its-kind Nano Ultrasonic Motor (USM) to deliver fast, quiet and smooth AF for both stills and movies.

MRP  
₹ **39 995.00/U**  
inclusive of all taxes

## STANDARD/MEDIUM TELEPHOTO LENSES

### EF50mm f/1.2L USM



With one of the range's widest apertures, this lens is a top low-light performer. Ideal for controlling depth of field and shooting indoors flash-free. Lens coating and construction minimise ghosting effect and flare.

MRP  
₹ **135 995.00/U**  
inclusive of all taxes

### EF50mm f/1.4 USM



Standard lens offering superb quality and portability. 2 high-refraction lens elements and Gaussian optics eliminate astigmatism and suppress astigmatic difference.

MRP  
₹ **37 995.00/U**  
inclusive of all taxes

### EF50mm f/1.8 STM



Compact, lightweight Prime Lens incorporates Super Spectra Coating to minimise flare and ghosting. Stepping Motor lets the lens focus smoothly and silently when capturing video. Excellent for everyday shots, sports, wildlife and night shooting.

MRP  
₹ **10 995.00/U**  
inclusive of all taxes

### EF85mm f/1.4L IS USM



This mid-telephoto lens is a mainstay in any portrait photographer's arsenal, featuring up to 4-stops image stabilisation, a large, bright f/1.4 aperture, high-speed AF and advanced optical technology, all within a compact, lightweight body.

MRP  
₹ **164 995.00/U**  
inclusive of all taxes

### EF85mm f/1.8 USM



Practical medium telephoto lens with superb delineation and portability. Front lens group does not rotate during focusing, so special filter effects are not affected.

MRP  
₹ **51 995.00/U**  
inclusive of all taxes

## TELEPHOTO/SUPER TELEPHOTO LENSES

Ideal for capturing dramatic landscapes, shooting sports photography or simply taking long range shots, telephoto zoom lenses deliver the action from afar, expressively and beautifully.

### EF70-200mm f/2.8L IS III USM



An improved version of Canon's popular f/2.8 fixed aperture telephoto zoom lens, well-known for its beautiful bokeh and low-light performance. ASC (Air Sphere Coating) in the lens optics greatly reduces the flare and ghosting common in shots with backlighting and intense direct light sources.

MRP  
₹ **208 995.00/U**  
inclusive of all taxes

### EF70-200mm f/4L IS II USM



An improved version of Canon's f/4 L-series fixed aperture telephoto zoom lens, popular for its lightweight and compact body. It features optics, optimised for higher image quality, a shorter minimum focusing distance (1m), and improved image stabilisation (up to approximately 5 stops).

MRP  
₹ **153 995.00/U**  
inclusive of all taxes

## TELEPHOTO/SUPER TELEPHOTO LENSES

### EF70-300mm f/4-5.6 IS II USM



This telephoto lens incorporates the Nano USM Technology for impressive precision, speed and silent AF. Overall photo quality is effortlessly enhanced, with an improved 4-stop IS performance as well as a Lens Information Display.

MRP

**₹ 61 995.00/U**

inclusive of all taxes

### EF75-300mm f/4-5.6 III USM



Light, compact 4x telephoto zoom lens, ideal for shooting sports, portraits and wildlife. Telephoto effect can 'compress' images or give excellent background blur. The smallest and lightest in its class.

MRP

**₹ 17 995.00/U**

inclusive of all taxes

### EF100-400mm f/4.5-5.6L IS II USM



Created for professionals and advanced amateur users who demand a wide zoom range and mobility. Features Canon's newly developed Air Sphere Coating (ASC), which helps to significantly reduce backlit flaring and ghosting.

MRP

**₹ 246 995.00/U**

inclusive of all taxes

### EF400mm f/2.8L IS III USM



Features fluorite optics which significantly minimises chromatic aberrations and 3 modes Image Stabilisation, designed specifically for high speed action photography. Sports a power focus mode, ideal for shooting videos.

MRP

**₹ 1 219 995.00/U**

inclusive of all taxes

### EF600mm f/4L IS III USM



Higher level of image quality has been achieved by the new optics, which features 2 fluorite lens elements. 3 modes Image Stabilisation, designed specifically for high speed action photography. Power Focus mode ensures smooth change in focus during movie recording. Better dust and moisture resistance boosts durability.

MRP

**₹ 1 319 995.00/U**

inclusive of all taxes

## MACRO LENSES

Get extreme close-up views with macro lenses. Delivering balanced colour reproduction and sharpness when shooting plant and nature subjects.

### EF100mm f/2.8L Macro IS USM



Featuring Canon's Hybrid Image Stabiliser, this 100mm Macro Lens delivers more advanced motion compensation, especially in macro photography where the camera is likely to shake and shift at the same time. Delivers noticeably sharper, crisper images.

MRP

**₹ 84 495.00/U**  
inclusive of all taxes

### MP-E65mm f/2.8 1-5x Macro Photo



Superior optics and UD glass elements suppress chromatic aberrations. Macro Ring Lite MR-14EX and Macro Twin Lite MT-24EX can be attached for flash photography. Removable tripod mount for solid support.

MRP

**₹ 85 995.00/U**  
inclusive of all taxes

## TILT-SHIFT LENSES

A must-have for architectural photographers, the tilt-shift capability of these lenses helps keep vertical lines straight – keeping walls, for example, perpendicular to the base of a building, for distortion-free shots.

### TS-E50mm f/2.8L Macro



Known for macro photography capabilities, this lens features overall improved operability with large tilt and shift knobs and a locking mechanism for sturdy support during professional shoots. Its 9-blade circular aperture enables beautiful bokeh effects, perfect for landscape, architecture and product photography.

MRP

**₹ 195 995.00/U**  
inclusive of all taxes

### TS-E90mm f/2.8L Macro



This 90mm medium telephoto tilt-shift lens produces shots at high resolution and contrast from a comfortable working distance with minimum distortion and aberration. Versatile for multiple settings, its macro feature comes with magnification of up to 0.5x, making it ideal for studio product photography.

MRP

**₹ 195 995.00/U**  
inclusive of all taxes

### TS-E135mm f/4L Macro



The 135mm focal length of this tilt-shift lens allows shots to be captured from a longer working distance. Large tilt and shift knobs as well as locking mechanism improve operability during professional photo shoots. Flaring and ghosting is also minimised with the special Subwavelength Structure Coating (SWC).

MRP

**₹ 195 995.00/U**  
inclusive of all taxes

## EF-M LENSES

This sleek and compact range of lenses is custom-crafted for the EOS M interchangeable lens camera. Just as excellent as any EF lens, these deliver astounding images with the finest details.

### EF-M15-45mm f/3.5-6.3 IS STM



Great starter kit lens, featuring a retraction mechanism to make it compact and weighing not more than approximately 130g, while managing to feature a solid lens construction.

MRP  
**₹ 23 995.00/U**  
 inclusive of all taxes

### EF-M18-150mm f/3.5-6.3 IS STM



High zoom ratio of approximately 8.3x, this lens is best for wide-angle landscapes and telephoto shots of distant subjects. Its high magnification of 0.31x and closest focusing distance of 0.45m at 150mm give users a more magnified view.

MRP  
**₹ 41 995.00/U**  
 inclusive of all taxes

### EF-M22mm f/2 STM



A lightweight "pancake" lens. Uses 1 aspheric lens element to ensure high-quality images with high levels of image resolution and contrast in the periphery, when at extreme close-up.

MRP  
**₹ 19 995.00/U**  
 inclusive of all taxes

### EF-M28mm f/3.5 Macro IS STM



This macro lens is capable of shooting at magnifications greater than life-size (1:1) on the 1.2x super macro mode. It is also Canon's first EF-M Lens with a built-in Macro Lite for flexible adjustment of light direction and strength.

MRP  
**₹ 26 995.00/U**  
 inclusive of all taxes

### EF-M55-200mm f/4.5-6.3 IS STM



Delivering high quality images, the first IS equipped EF-M Telephoto Zoom Lens is also compact and lightweight. Continuous AF Tracking is ideal for quiet movie and still photo shooting.

MRP  
**₹ 28 995.00/U**  
 inclusive of all taxes

## EF EXTENDERS

### Extender EF1.4x III



Extending lenses' focal length by a factor of 1.4x. Extender EF 1.4X III incorporates phenomenal optical performance with minimal chromatic aberration and perfectly complements many Canon Super Telephoto Lenses. Ideal for press, sports and nature photography.

MRP  
**₹ 41 995.00/U**  
 inclusive of all taxes

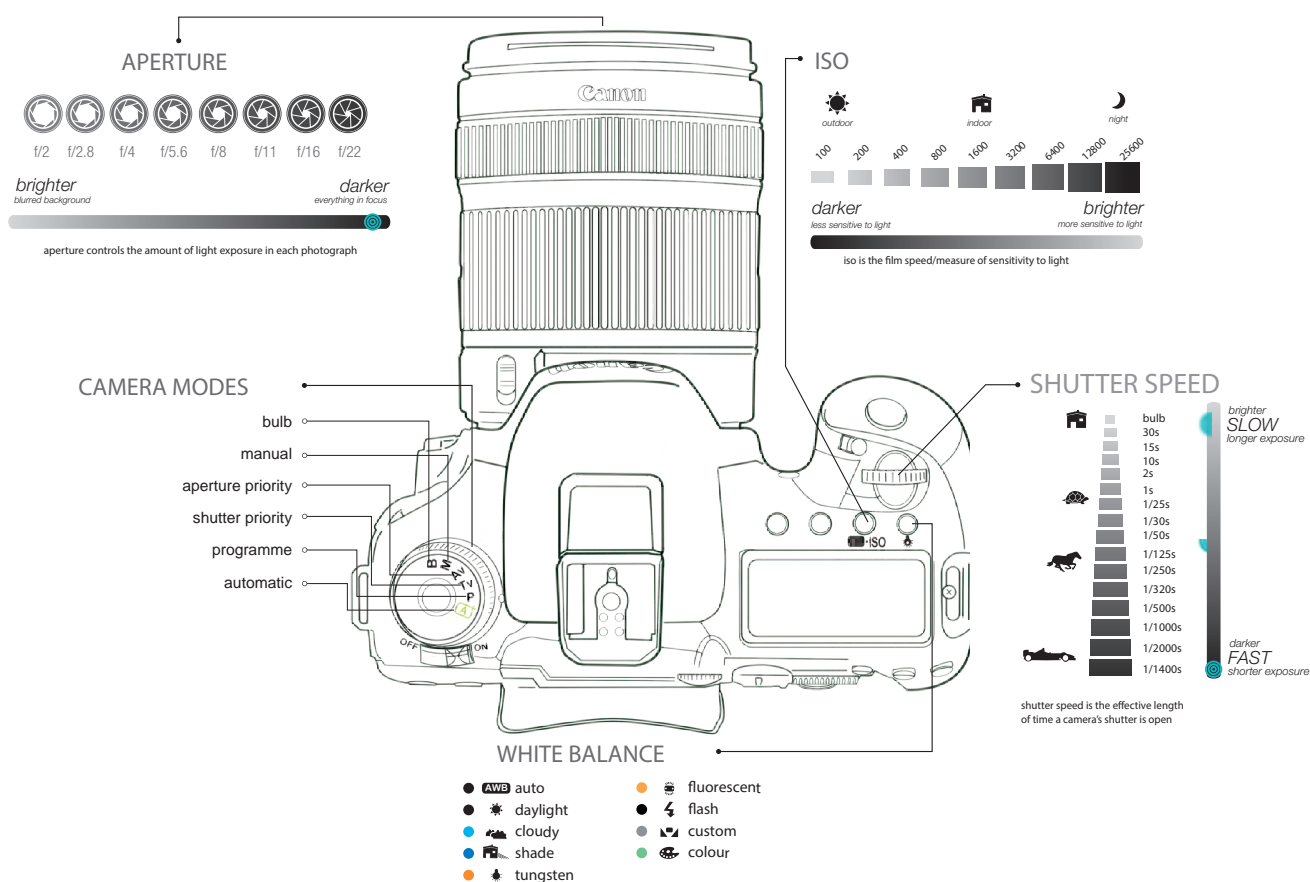
### Extender EF2x III



The extender increases the focal length of Canon L-series Telephoto or Telephoto Zoom Lens by a factor of 2x, with higher AF accuracy and improved communication between camera and lens. Ideal for press, sports and nature photography.

MRP  
**₹ 41 995.00/U**  
 inclusive of all taxes

## photography cheat sheet



Every Canon lens is a combination of innovations and technologies. Read on to find out what each component stands for, what it offers and how it suits your photography needs.

### Example

#### **EF70-200mm f/2.8L IS III USM**

EF mount is an electric mount system that electronically connects a Canon EF Lens to a Canon EOS DSLR Camera Body. This connection allows the swift transmission and exchange of data that controls various functions – from automatic focusing to metering.

Lens focal length may vary according to the camera sensor size. For example, the EF100mm f/2 USM has a focal length of approximately 160mm when attached to an EOS DSLR with an APS-C size CMOS Sensor.

**EF-S:** A derivative of the EF lens mount, EF-S mounts are for EOS DSLRs with APS-C Size CMOS Sensor.

**EF-M:** Designed for Canon EOS M Interchangeable-lens Cameras. Canon EF and EF-S Lenses can still be attached to EOS M Cameras using the EF-EOS M adaptor.

**MP-E:** MP-E Lens specialises in macro photography from life-size to 5x magnification.



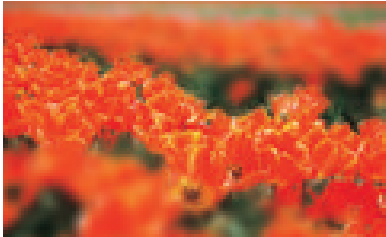
## Example

### TS-E 17 f/4L

Also known as Perspective Control Lenses, Tilt and Shift (TS-E) allows you to control perspective appearance.

Tilt adjustments control the area of an image that appears sharp—allowing selective focus area within the image in any direction. Shift movements give users control on the degree of distortion that occurs in architectural photography. Without moving the camera, it corrects distortion by making the image appear like it was captured from a higher position, making it the photographers' ideal choice for capturing high-rise buildings.

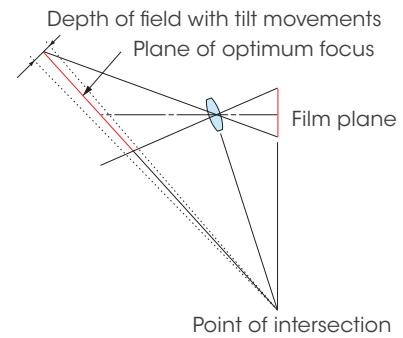
**Tilt:** Using tilt movement to focus an oblique subject plane.



With tilt



Without tilt



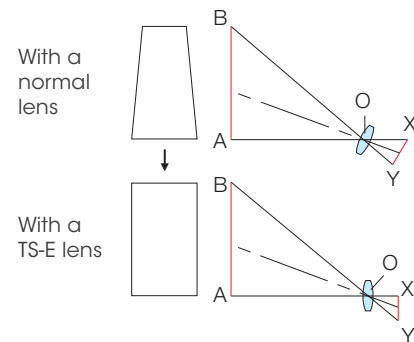
**Shift:** Using shift movement to focus tall building.



With Shift



Without Shift

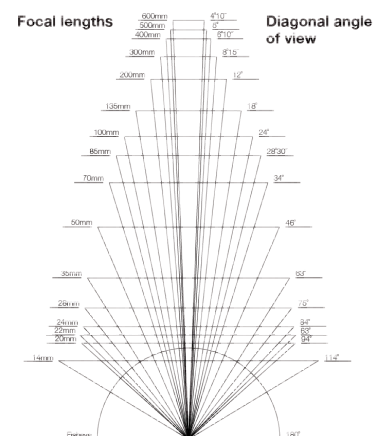
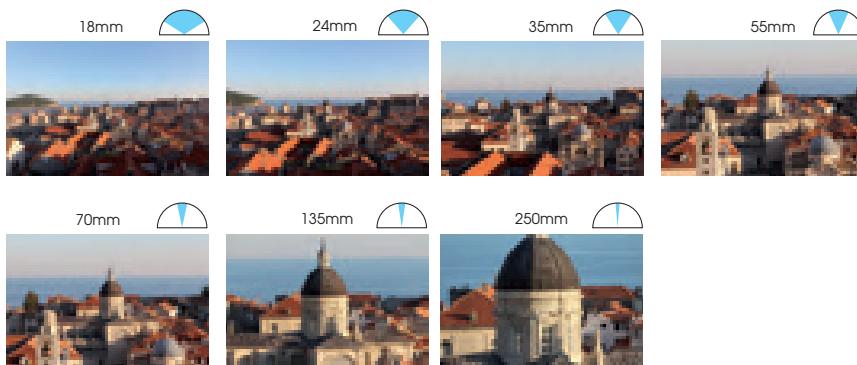


## Example

### EF70-200mm f/2.8L IS III USM

The smaller the number, the wider the angle of view. Thus, 70mm has wider angle of view than 200mm.

**Focal Lengths:** These photographs show how the same location can appear at different focal lengths. A shorter focal length offers wider scene coverage; a longer focal length, the opposite. Remembering the degree of change for the lenses, without looking in the viewfinder can be useful when selecting a lens.



## LENS GLOSSARY

Example

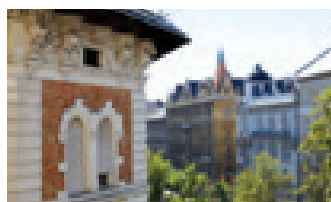
### EF70-200mm f/2.8L IS III USM

Maximum lens aperture. The bigger the **f/** number, the smaller the lens aperture, so less light passes through.

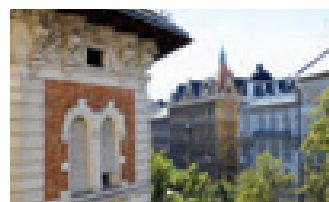
If the lens shows one number e.g. f/2, this means the lens aperture remains constant even when the focal length changes during zooming. If it shows a range of numbers e.g. f/2.8 – 4.0, the lens aperture changes along with the focal length during zooming. The depth of field can be made shallower by decreasing the photographing distance or having a large aperture (a smaller f-stop number e.g. f/1.2). It can be deepened by doing the reverse.



f/1.2



f/2.8



f/5.6



f/16

Example

### EF70-200mm f/2.8L IS III USM

'L' stands for luxury. Characterised by the red ring around the lens barrel, these premier lenses are mostly dust and water resistant. They showcase the epitome of Canon Lens technologies, such as Ultra-low Dispersion UD Glass, Fluorite and Aspherical Elements and Super Spectra Coating.



Example

### EF70-200mm f/2.8L IS III USM

A lens with an "IS" marking features Image Stabiliser.

Using shutter speed as fast as the reciprocal focal length of the lens is often recommended to achieve clear and sharp images. However, dimly-lit environments where a slow shutter speed is required, can result in blurred images for handheld shots.

With Image Stabiliser (IS) technology, gyro sensors detect lens vibration caused by hand shake and then automatically compensate for these movements. EF Lenses with IS Technology enable steady shooting up to 4 shutter stops lower than possible on conventional lenses. The EF200mm f/2L IS USM boasts blur correction up to 5 shutter stops (based on Canon standards) so photographers can perform handheld photography even in low-light environments. The IS unit also stabilises image seen through the viewfinder to achieve precise framing and focusing.

Example

### EF70-200mm f/2.8L IS III USM

In this case, the 'III' indicates that this is the third and improved version of its predecessor.

Example

### EF70-200mm f/2.8L IS III USM

Ultrasonic Motor (USM) Lenses convert ultrasonic vibration energy into rotational force for driving the lens. Autofocusing on USM Lenses is fast and precise, while consuming minimal battery power.

## SPECIFICATIONS

## RF LENSES

## ULTRA-WIDE/WIDE-ANGLE LENSES

RF14-35mm f/4L IS USM	
Lens Construction	16 elements in 12 groups
Diagonal Angle of View	114°30' - 63°00'
Focusing Actuator	Nano USM
Minimum Focusing Distance	0.2m
Optical Image Stabilisation	Up to 5.5 stops (CIPA Standards)
Aperture Blades	9 blades
Filter Size	77mm
Maximum Diameter & Length	Ø84.1 x 99.8mm
Weight	540g

RF15-30mm f/4.5-6.3 IS STM	
Lens Construction	13 elements in 11 groups
Diagonal Angle of View	110°30' - 71°35'
Focusing Actuator	STM
Minimum Focusing Distance	0.28m
Optical Image Stabilisation	Up to 5.5 stops (CIPA Standards)
Aperture Blades	7 blades
Filter Size	67 mm
Maximum Diameter & Length	Ø76.6 x 88.4mm
Weight	390g

## STANDARD/MEDIUM TELEPHOTO LENSES

RF24-70mm f/2.8L IS USM	
Lens Construction	21 elements in 15 groups
Diagonal Angle of View	84°00' - 34°00'
Focusing Actuator	Nano USM
Minimum Focusing Distance	0.21m
Optical Image Stabilisation	Up to 5 stops (CIPA Standards)
Aperture Blades	9 blades
Filter Size	82mm
Maximum Diameter & Length	Ø88.5 x 125.7mm
Weight	900g

RF24-105mm f/4L IS USM	
Lens Construction	18 elements in 14 groups
Diagonal Angle of View	84°00' - 23°20'
Focusing Actuator	Nano USM
Minimum Focusing Distance	0.45m
Optical Image Stabilisation	Up to 5 stops (CIPA Standards)
Aperture Blades	9 blades
Filter Size	77mm
Maximum Diameter & Length	Ø83.5 x 107.3mm
Weight	700g

RF50mm f/1.8 STM	
Lens Construction	6 elements in 5 groups
Diagonal Angle of View	46°00'
Focusing Actuator	STM
Minimum Focusing Distance	0.30m
Optical Image Stabilisation	-
Aperture Blades	7 blades
Filter Size	43mm
Maximum Diameter & Length	Ø69.2 x 40.5mm
Weight	160g

RF85mm f/1.2L USM	
Lens Construction	13 elements in 9 groups
Diagonal Angle of View	28°30'
Focusing Actuator	Ring-type USM
Minimum Focusing Distance	0.85m
Optical Image Stabilisation	-
Aperture Blades	9 blades
Filter Size	82mm
Maximum Diameter & Length	Ø103.2 x 117.3mm
Weight	1195g

RF135mm f/1.8L IS USM	
Lens Construction	17 elements in 12 groups
Diagonal Angle of View	18°00'
Focusing Actuator	Nano USM
Minimum Focusing Distance	0.7m
Optical Image Stabilisation	Up to 5.5 stops (CIPA Standards)
Aperture Blades	9 blades
Filter Size	82mm
Maximum Diameter & Length	Ø89.2 x 130.3mm
Weight	935g

RF15-35mm f/2.8L IS USM	
Lens Construction	16 elements in 12 groups
Diagonal Angle of View	110°30' - 63°00'
Focusing Actuator	Nano USM
Minimum Focusing Distance	0.28m
Optical Image Stabilisation	Up to 5 stops (CIPA Standards)
Aperture Blades	9 blades
Filter Size	82mm
Maximum Diameter & Length	Ø88.5 x 126.8mm
Weight	840g

RF16mm f/2.8 STM	
Lens Construction	9 elements in 7 groups
Diagonal Angle of View	108°10'
Focusing Actuator	STM
Minimum Focusing Distance	0.13m
Optical Image Stabilisation	-
Aperture Blades	7 blades
Filter Size	43 mm
Maximum Diameter & Length	Ø69.2 x 40.1mm
Weight	165g

RF28-70mm f/2L USM	
Lens Construction	19 elements in 13 groups
Diagonal Angle of View	75°00' - 34°00'
Focusing Actuator	Ring-type USM
Minimum Focusing Distance	0.39m
Optical Image Stabilisation	-
Aperture Blades	9 blades
Filter Size	95mm
Maximum Diameter & Length	Ø103.8 x 139.8mm
Weight	1430g

RF24-105mm f/4-7.1 IS STM	
Lens Construction	11 elements in 13 groups
Diagonal Angle of View	84°00' - 23°20'
Focusing Actuator	STM
Minimum Focusing Distance	0.2m
Optical Image Stabilisation	Up to 5 stops (CIPA Standards)
Aperture Blades	7 blades
Filter Size	67mm
Maximum Diameter & Length	Ø76.6 x 88.8mm
Weight	395g

RF50mm f/1.2L USM	
Lens Construction	15 elements in 9 groups
Diagonal Angle of View	46°00'
Focusing Actuator	Ring-type USM
Minimum Focusing Distance	0.40m
Optical Image Stabilisation	-
Aperture Blades	10 blades
Filter Size	77mm
Maximum Diameter & Length	Ø89.8 x 108mm
Weight	950g

RF85mm f/1.2L USM DS	
Lens Construction	13 elements in 9 groups
Diagonal Angle of View	28°30'
Focusing Actuator	Ring-type USM
Minimum Focusing Distance	0.85m
Optical Image Stabilisation	-
Aperture Blades	9 blades
Filter Size	82mm
Maximum Diameter & Length	Ø103.2 x 117.3mm
Weight	1195g

## TELEPHOTO/SUPER TELEPHOTO LENSES

RF24-240mm f/4-6.3 IS USM	
Lens Construction	21 elements in 15 groups
Diagonal Angle of View	84°00' - 10°20'
Focusing Actuator	Nano USM
Minimum Focusing Distance	0.50m
Optical Image Stabilisation	Up to 5 stops (CIPA Standards)
Aperture Blades	7 blades
Filter Size	72mm
Maximum Diameter & Length	Ø80.4 x 122.5mm
Weight	750g

# SPECIFICATIONS

## RF LENSES

### TELEPHOTO/SUPER TELEPHOTO LENSES

RF70-200mm f/2.8L IS USM	
Lens Construction	17 elements in 13 groups
Diagonal Angle of View	34°00' - 12°00'
Focusing Actuator	Dual Nano USM
Minimum Focusing Distance	0.70m
Optical Image Stabilisation	Up to 5 stops (CIPA Standards)
Aperture Blades	9 blades
Filter Size	77mm
Maximum Diameter & Length	Ø89.9 x 146mm
Weight	1070g (w/o tripod mount)

RF100-400mm f/5.-8 IS USM	
Lens Construction	12 elements in 9 groups
Diagonal Angle of View	24°00' - 6°10'
Focusing Actuator	Nano USM
Minimum Focusing Distance	0.88m
Optical Image Stabilisation	Up to 5.5 stops (CIPA Standards)
Aperture Blades	9 blades
Filter Size	67mm
Maximum Diameter & Length	Ø79.5 x 164.7mm
Weight	635g

RF600mm f/11 IS STM	
Lens Construction	10 elements in 7 groups
Diagonal Angle of View	4°10'
Focusing Actuator	STM
Minimum Focusing Distance	4.50m
Optical Image Stabilisation	Up to 5 stops (CIPA Standards)
Aperture Blades	-
Filter Size	82mm
Maximum Diameter & Length	Ø93 x 199.5mm
Weight	930g

RF400mm f/2.8L IS USM	
Lens Construction	17 elements in 13 groups
Diagonal Angle of View	6°10'
Focusing Actuator	Ring Type USM
Minimum Focusing Distance	2.50m
Optical Image Stabilisation	Up to 5.5 stops (CIPA Standards)
Aperture Blades	9 blades
Filter Size	52mm Drop-in
Maximum Diameter & Length	Ø163 x 367mm
Weight	2890g

RF800mm f/5.6L IS USM	
Lens Construction	26 elements in 18 groups
Diagonal Angle of View	3°5'
Focusing Actuator	Ring Type USM
Minimum Focusing Distance	2.6m
Optical Image Stabilisation	Up to 4.5 stops (CIPA Standards)
Aperture Blades	9 blades
Filter Size	52mm Drop-in
Maximum Diameter & Length	Ø163 x 432mm
Weight	3140g

### MACRO LENSES

RF24mm f/1.8 Macro IS STM	
Lens Construction	11 elements in 9 groups
Diagonal Angle of View	84°00'
Focusing Actuator	STM
Minimum Focusing Distance	0.14m
Optical Image Stabilisation	Up to 5 stops (CIPA Standards)
Aperture Blades	9 blades
Filter Size	52mm
Maximum Diameter & Length	Ø74.4 x 63.1mm
Weight	270g

RF85mm f/2 Macro IS STM	
Lens Construction	12 elements in 11 groups
Diagonal Angle of View	28°30'
Focusing Actuator	STM
Minimum Focusing Distance	0.35m
Optical Image Stabilisation	Up to 5 stops (CIPA Standards)
Aperture Blades	9 blades
Filter Size	67mm
Maximum Diameter & Length	Ø78 x 90.5mm
Weight	500g

RF70-200mm f/4L IS USM	
Lens Construction	16 elements in 11 groups
Diagonal Angle of View	34°00' - 12°00'
Focusing Actuator	Dual Nano USM
Minimum Focusing Distance	0.60m
Optical Image Stabilisation	Up to 5 stops (CIPA Standards)
Aperture Blades	9 blades
Filter Size	77mm
Maximum Diameter & Length	Ø83.5 x 119mm
Weight	695g

RF100-500mm f/4.5-7.1L IS USM	
Lens Construction	20 elements in 14 groups
Diagonal Angle of View	24°00' - 5°00'
Focusing Actuator	Dual Nano USM
Minimum Focusing Distance	0.90m
Optical Image Stabilisation	Up to 5 stops (CIPA Standards)
Aperture Blades	9 blades
Filter Size	77mm
Maximum Diameter & Length	Ø93.8 x 207.6mm
Weight	1370g

RF800mm f/11 IS STM	
Lens Construction	11 elements in 8 groups
Diagonal Angle of View	3°05'
Focusing Actuator	STM
Minimum Focusing Distance	6.00m
Optical Image Stabilisation	Up to 4 stops (CIPA Standards)
Aperture Blades	-
Filter Size	95mm
Maximum Diameter & Length	Ø101.6 x 281.8mm
Weight	1260g

RF600mm f/4L IS USM	
Lens Construction	17 elements in 13 groups
Diagonal Angle of View	4°10'
Focusing Actuator	Ring Type USM
Minimum Focusing Distance	4.20m
Optical Image Stabilisation	Up to 5.5 stops (CIPA Standards)
Aperture Blades	9 blades
Filter Size	52mm Drop-in
Maximum Diameter & Length	Ø168 x 472mm
Weight	3090g

RF1200mm f/8L IS USM	
Lens Construction	26 elements in 18 groups
Diagonal Angle of View	2°5'
Focusing Actuator	Ring Type USM
Minimum Focusing Distance	4.3m
Optical Image Stabilisation	Up to 4 stops (CIPA Standards)
Aperture Blades	9 blades
Filter Size	52mm Drop-in
Maximum Diameter & Length	Ø168 x 537mm
Weight	3340g

RF35mm f/1.8 Macro IS STM	
Lens Construction	11 elements in 9 groups
Diagonal Angle of View	63°00'
Focusing Actuator	STM
Minimum Focusing Distance	0.17m
Optical Image Stabilisation	Up to 5 stops (CIPA Standards)
Aperture Blades	9 blades
Filter Size	52mm
Maximum Diameter & Length	Ø74.4 x 62.8mm
Weight	305g

RF100mm f/2.8L MACRO IS USM	
Lens Construction	17 elements in 13 groups
Diagonal Angle of View	24°00'
Focusing Actuator	Dual Nano USM
Minimum Focusing Distance	0.26m
Optical Image Stabilisation	Up to 5 stops (CIPA Standards)
Aperture Blades	9 blades
Filter Size	67mm
Maximum Diameter & Length	Ø81.5 x 148mm
Weight	730g

# SPECIFICATIONS

## VR LENS

RF5.2mm f/2.8L DUAL FISHEYE	
Lens Construction	12 elements in 10 groups
Diagonal Angle of View	190°00'
Focusing Actuator	Manual Focusing Only
Minimum Focusing Distance	0.2m
Aperture Blades [each lens]	7 blades
Filter Size	Rear Gelatin Filter Holder Support Only
Dimensions [Width x Height x Length]	121.1 x 83.6 x 53.5mm
Weight	350g

RF-S18-150mm f/3.5-6.3 IS STM	
Lens Construction	17 elements in 13 groups
Diagonal Angle of View	74° 20' - 10° 25'
Focusing Actuator	STM
Minimum Focusing Distance	0.17m
Optical Image Stabilisation	Up to 4.5 stops (CIPA Standards)
Aperture Blades	7 blades
Filter Size	55mm
Maximum Diameter & Length	Ø69 x 84.5mm
Weight	310g

## RF-S LENSES

RF-S18-45mm f/4.5-6.3 IS STM	
Lens Construction	7 elements in 7 groups
Diagonal Angle of View	74° 20' - 33° 40'
Focusing Actuator	STM
Minimum Focusing Distance	0.2m
Optical Image Stabilisation	Up to 4 stops (CIPA Standards)
Aperture Blades	7 blades
Filter Size	49mm
Maximum Diameter & Length	Ø69 x 44.3mm
Weight	130g

## RF EXTENDERS

EXTENDER RF1.4x	
Lens Construction	7 elements in 4 groups
Maximum Diameter & Length	Ø71.2 x 20.3mm
Weight	225g
EXTENDER RF2x	
Lens Construction	9 elements in 5 groups
Maximum Diameter & Length	Ø71.2 x 39.3mm
Weight	340g

## EF LENSES

### ULTRA-WIDE/WIDE-ANGLE LENSES

EF8-15mm f/4L Fisheye USM	
Lens Construction	14 elements in 11 groups
Diagonal Angle of View	180°00' - 175°30'
Focusing Actuator	Ring-type USM
Minimum Focusing Distance	0.15m
Optical Image Stabilisation	-
Aperture Blades	7 blades
Filter Size	Gelatin
Maximum Diameter & Length	Ø78.5 x 83mm
Weight	540g

EF11-24mm f/4L USM	
Lens Construction	16 elements in 11 groups
Diagonal Angle of View	126°05' - 84°00'
Focusing Actuator	Ring-type USM
Minimum Focusing Distance	0.28m
Optical Image Stabilisation	-
Aperture Blades	9 blades
Filter Size	Gelatin
Maximum Diameter & Length	Ø108 x 132mm
Weight	1,180g

EF16-35mm f/4L IS USM	
Lens Construction	16 elements in 12 groups
Diagonal Angle of View	108°10' - 63°00'
Focusing Actuator	Ring-type USM
Minimum Focusing Distance	0.28m
Optical Image Stabilisation	Up to 4 stops (CIPA Standards)
Aperture Blades	9 blades
Filter Size	77mm
Maximum Diameter & Length	Ø82.6 x 112.8mm
Weight	615g

EF-S18-55mm f/4-5.6 IS STM	
Lens Construction	12 elements in 10 groups
Diagonal Angle of View	74°20' - 27°50'
Focusing Actuator	Screw lead-type STM
Minimum Focusing Distance	0.25m
Optical Image Stabilisation	Up to 4 stops (CIPA Standards)
Aperture Blades	7 blades
Filter Size	58mm
Maximum Diameter & Length	Ø66.5 x 61.8mm
Weight	215g

EF-S24mm f/2.8 STM	
Lens Construction	6 elements in 5 groups
Diagonal Angle of View	34°55'
Focusing Actuator	STM
Minimum Focusing Distance	0.16m
Optical Image Stabilisation	-
Aperture Blades	7 blades
Filter Size	52mm
Maximum Diameter & Length	Ø68.2 x 22.8mm
Weight	125g

EF-S10-18mm f/4.5-5.6 IS STM	
Lens Construction	14 elements in 11 groups
Diagonal Angle of View	107°30' - 74°20'
Focusing Actuator	Screw lead-type STM
Minimum Focusing Distance	0.22m
Optical Image Stabilisation	Up to 4 stops (CIPA Standards)
Aperture Blades	7 blades
Filter Size	67mm
Maximum Diameter & Length	Ø74.6 x 72mm
Weight	240g

EF16-35mm f/2.8 III USM	
Lens Construction	16 elements in 11 groups
Diagonal Angle of View	108°10' - 63°00'
Focusing Actuator	Ring-type USM
Minimum Focusing Distance	0.28m
Optical Image Stabilisation	-
Aperture Blades	9 blades
Filter Size	82mm
Maximum Diameter & Length	Ø88.5 x 127.5mm
Weight	790g

EF-S17-55mm f/2.8 IS USM	
Lens Construction	19 elements in 12 groups
Diagonal Angle of View	78°30' - 27°50'
Focusing Actuator	Ring-type USM
Minimum Focusing Distance	0.35m
Optical Image Stabilisation	Up to 3 stops (CIPA Standards)
Aperture Blades	7 blades
Filter Size	77mm
Maximum Diameter & Length	Ø83.5 x 110.6mm
Weight	645g

EF24mm f/1.4L II USM	
Lens Construction	13 elements in 10 groups
Diagonal Angle of View	84°00'
Focusing Actuator	Ring-type USM
Minimum Focusing Distance	0.25m
Optical Image Stabilisation	-
Aperture Blades	8 blades
Filter Size	77mm
Maximum Diameter & Length	Ø83.5 x 86.9mm
Weight	650g

EF35mm f/1.4L II USM	
Lens Construction	14 elements in 11 groups
Diagonal Angle of View	63°00'
Focusing Actuator	Ring-type USM
Minimum Focusing Distance	0.28m
Optical Image Stabilisation	-
Aperture Blades	9 blades
Filter Size	72mm
Maximum Diameter & Length	Ø80.4 x 105.5mm
Weight	760g

# SPECIFICATIONS

## EF LENSES

### STANDARD/MEDIUM TELEPHOTO LENSES

EF24-70mm f/2.8 II USM	
Lens Construction	18 elements in 13 groups
Diagonal Angle of View	84°00' - 34°00'
Focusing Actuator	Ring-type USM
Minimum Focusing Distance	0.38m
Optical Image Stabilisation	-
Aperture Blades	9 blades
Filter Size	82mm
Maximum Diameter & Length	Ø88.5 x 113mm
Weight	805g

EF-S18-135mm f/3.5-5.6 IS USM	
Lens Construction	16 elements in 12 groups
Diagonal Angle of View	74°20' - 11°30'
Focusing Actuator	Nano USM
Minimum Focusing Distance	0.39m
Optical Image Stabilisation	Up to 4 stops (CIPA Standards)
Aperture Blades	7 blades
Filter Size	67mm
Maximum Diameter & Length	Ø77.4 x 96mm
Weight	515g

EF50mm f/1.4 USM	
Lens Construction	7 elements in 6 groups
Diagonal Angle of View	46°00'
Focusing Actuator	Micro USM
Minimum Focusing Distance	0.45m
Optical Image Stabilisation	-
Aperture Blades	8 blades
Filter Size	58mm
Maximum Diameter & Length	Ø73.8 x 50.5mm
Weight	290g

EF85mm f/1.4L IS USM	
Lens Construction	14 elements in 10 groups
Diagonal Angle of View	28°00'
Focusing Actuator	Ring-type USM
Minimum Focusing Distance	0.85m
Optical Image Stabilisation	Up to 4 stops (CIPA Standards)
Aperture Blades	9 blades
Filter Size	77mm
Maximum Diameter & Length	Ø88.6 x 105.4mm
Weight	950g

### TELEPHOTO/SUPER TELEPHOTO LENSES

EF70-200mm f/2.8L IS III USM	
Lens Construction	23 elements in 19 groups
Diagonal Angle of View	34°00' - 12°00'
Focusing Actuator	Ring-type USM
Minimum Focusing Distance	1.20m
Optical Image Stabilisation	Up to 3.5 stops (CIPA Standards)
Aperture Blades	8 blades
Filter Size	77mm
Maximum Diameter & Length	Ø88.8 x 199mm
Weight	1,480g

EF70-300mm f/4-5.6 IS II USM	
Lens Construction	17 elements in 12 groups
Diagonal Angle of View	34°00' - 8°15'
Focusing Actuator	Nano USM
Minimum Focusing Distance	1.20m
Optical Image Stabilisation	Up to 4 stops (CIPA Standards)
Aperture Blades	9 blades
Filter Size	67mm
Maximum Diameter & Length	Ø80 x 145.5mm
Weight	710g

EF100-400mm f/4.5-5.6L IS II USM	
Lens Construction	21 elements in 16 groups
Diagonal Angle of View	24°00' - 6°10'
Focusing Actuator	Ring-type USM
Minimum Focusing Distance	0.98m
Optical Image Stabilisation	Up to 4 stops (CIPA Standards)
Aperture Blades	9 blades
Filter Size	77mm
Maximum Diameter & Length	Ø94 x 193mm
Weight	1,570g

EF24-105mm f/4L IS II USM	
Lens Construction	17 elements in 12 groups
Diagonal Angle of View	84°00' - 23°20'
Focusing Actuator	Ring-type USM
Minimum Focusing Distance	0.45m
Optical Image Stabilisation	Up to 4 stops (CIPA Standards)
Aperture Blades	10 blades
Filter Size	77mm
Maximum Diameter & Length	Ø83.5 x 118mm
Weight	795g

EF50mm f/1.2L USM	
Lens Construction	8 elements in 6 groups
Diagonal Angle of View	46°00'
Focusing Actuator	Ring-type USM
Minimum Focusing Distance	0.45m
Optical Image Stabilisation	-
Aperture Blades	8 blades
Filter Size	72mm
Maximum Diameter & Length	Ø85.8 x 65.5mm
Weight	590g

EF50mm f/1.8 STM	
Lens Construction	6 elements in 5 groups
Diagonal Angle of View	46°00'
Focusing Actuator	STM
Minimum Focusing Distance	0.35m
Optical Image Stabilisation	-
Aperture Blades	7 blades
Filter Size	49mm
Maximum Diameter & Length	Ø69.2 x 39.3mm
Weight	160g

EF85mm f/1.8 USM	
Lens Construction	9 elements in 7 groups
Diagonal Angle of View	28°00'
Focusing Actuator	Ring-type USM
Minimum Focusing Distance	0.85m
Optical Image Stabilisation	-
Aperture Blades	8 blades
Filter Size	58mm
Maximum Diameter & Length	Ø75 x 71.5mm
Weight	425g

EF70-200mm f/4L IS II USM	
Lens Construction	20 elements in 15 groups
Diagonal Angle of View	34°00' - 12°00'
Focusing Actuator	Ring-type USM
Minimum Focusing Distance	1.00m
Optical Image Stabilisation	Up to 5 stops (CIPA Standards)
Aperture Blades	9 blades
Filter Size	72mm
Maximum Diameter & Length	Ø80 x 176mm
Weight	780g

EF75-300mm f/4-5.6 III	
Lens Construction	13 elements in 9 groups
Diagonal Angle of View	32°11' - 8°15'
Focusing Actuator	DC Motor
Minimum Focusing Distance	1.50m
Optical Image Stabilisation	-
Aperture Blades	7 blades
Filter Size	58mm
Maximum Diameter & Length	Ø71 x 122mm
Weight	480g

EF400mm f/2.8L IS III USM	
Lens Construction	16 elements in 12 groups
Diagonal Angle of View	6°10'
Focusing Actuator	Ring-type USM
Minimum Focusing Distance	2.70m
Optical Image Stabilisation	Up to 5 stops (CIPA Standards)
Aperture Blades	9 blades
Filter Size	52mm drop-in
Maximum Diameter & Length	Ø163 x 343mm
Weight	3,850g



## SPECIFICATIONS

## EF LENSES

## TELEPHOTO/SUPER TELEPHOTO LENSES

EF600mm f/4L IS III USM	
Lens Construction	16 elements in 12 groups
Diagonal Angle of View	4°10'
Focusing Actuator	Ring-type USM
Minimum Focusing Distance	4.50m
Optical Image Stabilisation	Up to 5 stops (CIPA Standards)
Aperture Blades	9 blades
Filter Size	52mm drop-in
Maximum Diameter & Length	Ø168 x 448mm
Weight	3,920g

MP-E65mm f/2.8 1-5x Macro Photo	
Lens Construction	10 elements in 8 groups
Diagonal Angle of View	18°40'
Focusing Actuator	-
Minimum Focusing Distance	0.24m
Optical Image Stabilisation	-
Aperture Blades	6 blades
Filter Size	58mm
Maximum Diameter & Length	Ø81 x 98mm
Weight	710g

TS-E90mm f/2.8L Macro	
Lens Construction	11 elements in 9 groups
Diagonal Angle of View	27°00'
Focusing Actuator	-
Minimum Focusing Distance	0.39m
Optical Image Stabilisation	-
Aperture Blades	9 blades
Filter Size	77mm
Maximum Diameter & Length	Ø86.9 x 116.5mm
Weight	915g

## EF-M LENSES

EF-M15-45mm f/3.5-6.3 IS STM	
Lens Construction	10 elements in 9 groups
Diagonal Angle of View	84°30'-33°40'
Focusing Actuator	STM
Minimum Focusing Distance	0.25m
Optical Image Stabilisation	Up to 3.5 stops (CIPA Standards)
Aperture Blades	7 blades
Filter Size	49mm
Maximum Diameter & Length	Ø60.9 x 44.5mm
Weight	130g

EF-M28mm f/3.5 Macro IS STM	
Lens Construction	11 elements in 10 groups
Diagonal Angle of View	51°55'
Focusing Actuator	Gear-type STM
Minimum Focusing Distance	0.09m
Optical Image Stabilisation	Hybrid IS, Up to 3.5 stops (CIPA Standards)
Aperture Blades	7 blades
Filter Size	-
Maximum Diameter & Length	Ø60.9 x 45.5mm
Weight	130g

EF-M55-200mm f/4.5-6.3 IS STM	
Lens Construction	17 elements in 11 groups
Diagonal Angle of View	27°50' - 7°50'
Focusing Actuator	STM
Minimum Focusing Distance	1.00m
Optical Image Stabilisation	Up to 3.5 stops (CIPA Standards)
Aperture Blades	7 blades
Filter Size	52mm
Maximum Diameter & Length	Ø60.9 x 86.5mm
Weight	260g

## MACRO LENSES

EF100mm f/2.8L Macro IS USM	
Lens Construction	15 elements in 12 groups
Diagonal Angle of View	24°00'
Focusing Actuator	Ring-type USM
Minimum Focusing Distance	0.30m
Optical Image Stabilisation	Hybrid IS, Up to 4 stops (CIPA Standards)
Aperture Blades	9 blades
Filter Size	67mm
Maximum Diameter & Length	Ø77.7 x 123.3mm
Weight	625g

## TILT-SHIFT LENSES

TS-E50mm f/2.8L Macro	
Lens Construction	12 elements in 9 groups
Diagonal Angle of View	46°00'
Focusing Actuator	-
Minimum Focusing Distance	0.27m
Optical Image Stabilisation	-
Aperture Blades	9 blades
Filter Size	77mm
Maximum Diameter & Length	Ø86.9 x 114.9mm
Weight	945g

TS-E135mm f/4L Macro	
Lens Construction	11 elements in 7 groups
Diagonal Angle of View	18°00'
Focusing Actuator	-
Minimum Focusing Distance	0.49m
Optical Image Stabilisation	-
Aperture Blades	9 blades
Filter Size	82mm
Maximum Diameter & Length	Ø86.9 x 139.1mm
Weight	1,110g

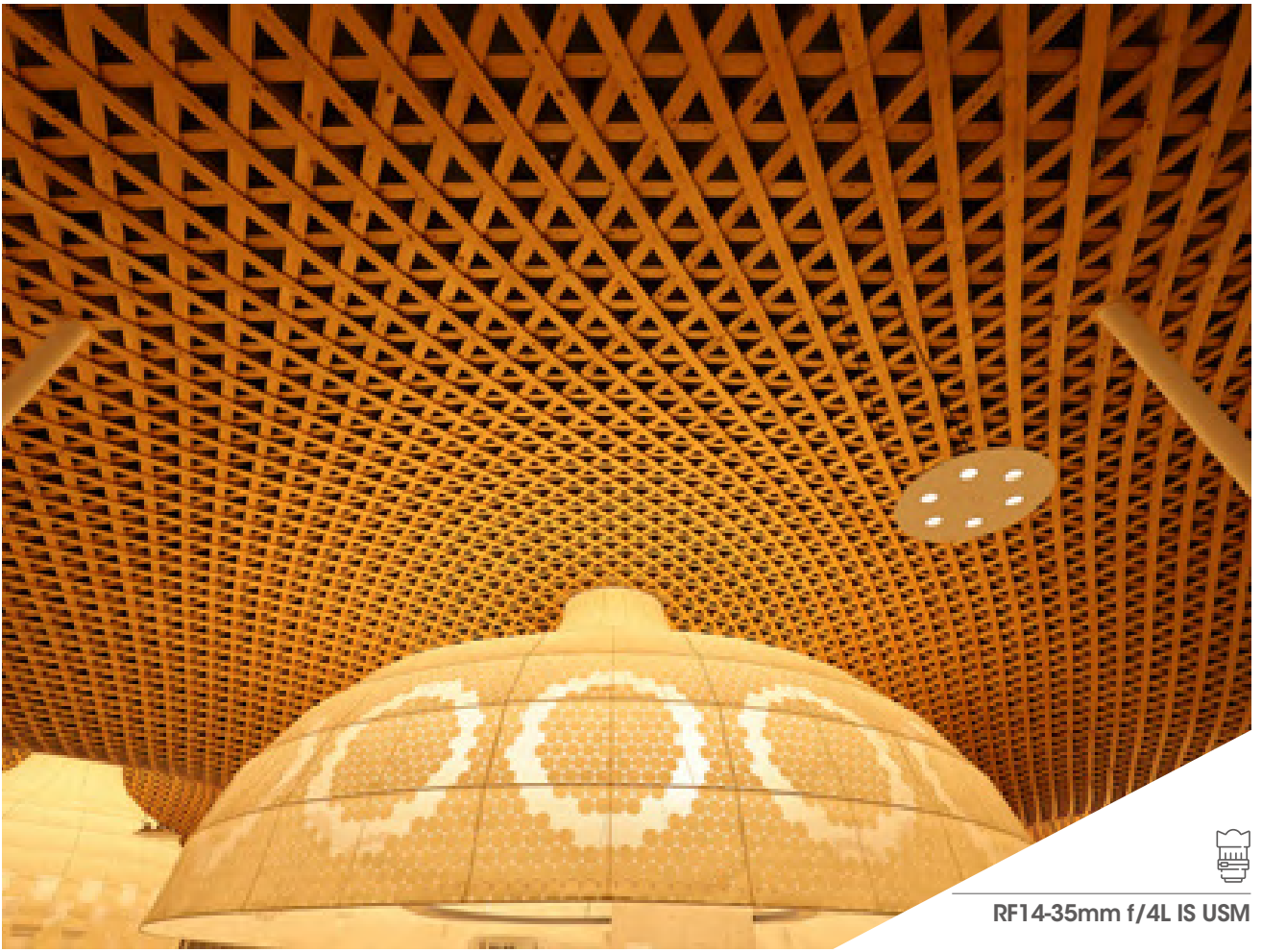
EF-M22mm f/2 STM	
Lens Construction	7 elements in 6 groups
Diagonal Angle of View	63°30'
Focusing Actuator	STM
Minimum Focusing Distance	0.15m
Optical Image Stabilisation	-
Aperture Blades	7 blades
Filter Size	43mm
Maximum Diameter & Length	Ø60.9 x 23.7mm
Weight	105g

EF-M18-150mm f/3.5-6.3 IS STM	
Lens Construction	17 elements in 13 groups
Diagonal Angle of View	74°20' - 10°25'
Focusing Actuator	STM
Minimum Focusing Distance	0.25m
Optical Image Stabilisation	Up to 4 stops (CIPA Standards)
Aperture Blades	7 blades
Filter Size	55mm
Maximum Diameter & Length	Ø60.9 x 86.5mm
Weight	300g

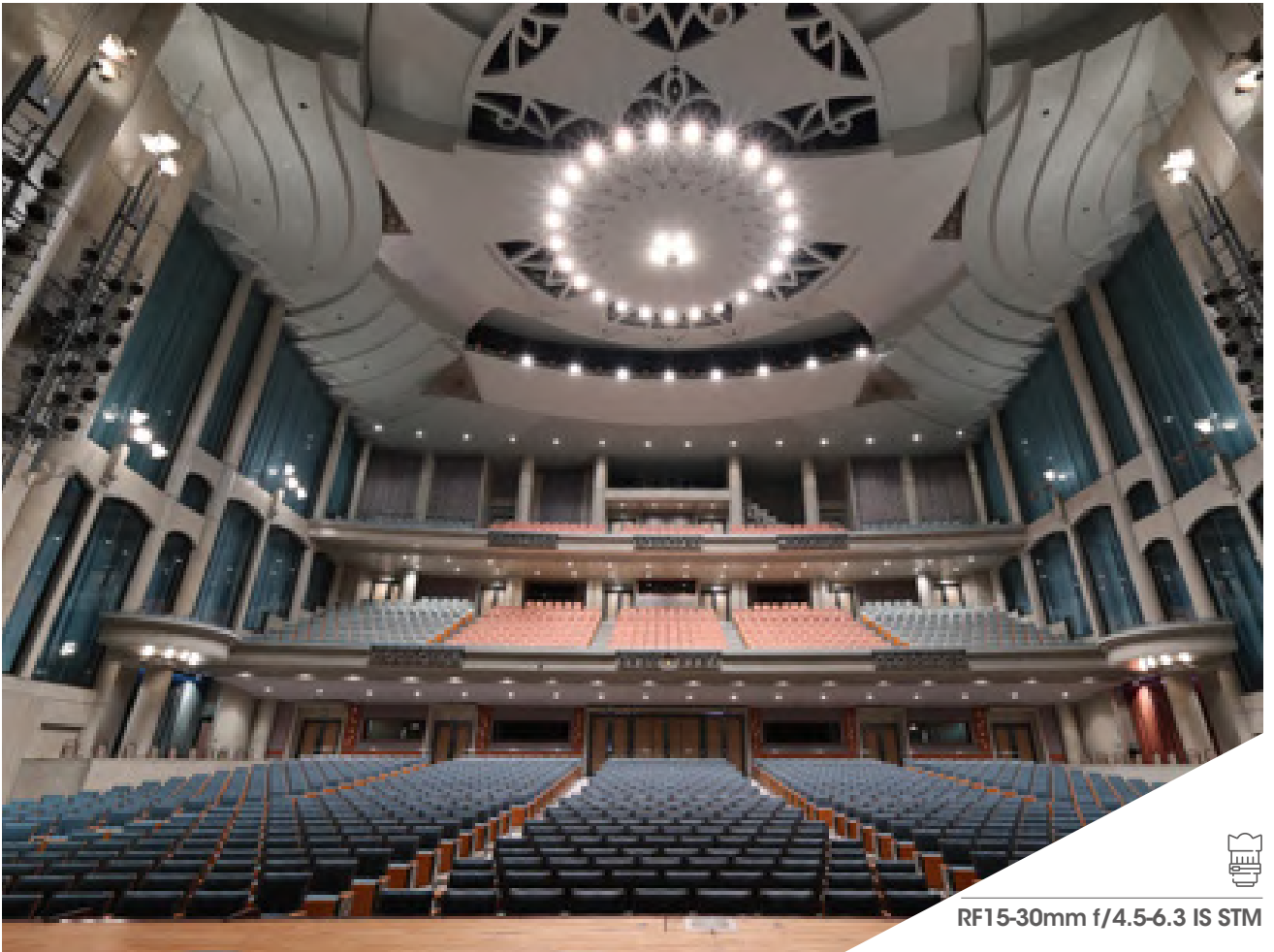
## EXTENDERS

EXTENDER EF1.4x III	
Lens Construction	7 elements in 3 groups
Maximum Diameter & Length	Ø72 x 27.2mm
Weight	225g

EXTENDER EF2x III	
Lens Construction	9 elements in 5 groups
Maximum Diameter & Length	Ø72 x 52.7mm
Weight	325g



RF14-35mm f/4L IS USM



RF15-30mm f/4.5-6.3 IS STM



RF16mm f/2.8 STM



RF24mm f/1.8 Macro IS STM



RF35mm f/1.8 Macro IS STM  
Photo Credit: Nitin Arora



RF28-70mm f/2L USM  
Photo Credit: Anega Bawa



RF24-105mm f/4L IS USM  
Photo Credit: Abhishek Khanna



RF24-105mm f/4-7.1 IS STM



RF50mm f/1.8 STM



RF85mm f/2 Macro IS STM





RF85mm f/1.2L USM  
Photo Credit: Reji Bhaskar



RF85mm f/1.2L USM DS  
Photo Credit: Anega Bawa



RF100mm f/2.8L MACRO IS USM  
Photo Credit: Ravi Dhingra



RF135mm f/1.8L IS USM



RF24-240mm f/4-6.3 IS USM  
Photo Credit: Ravi Dhingra



RF70-200mm f/4L IS USM



RF70-200mm f/2.8L IS USM  
Photo Credit: Yogi Trivedi



RF100-400mm f/5.6-8 IS USM



RF100-500mm f/4.5-7.1L IS USM +  
Extender RF 2x  
Photo Credit: Teja Soni



RF400mm f/2.8L IS USM  
Photo Credit: Sundeep Gajjar



RF600mm f/4L IS USM  
Photo Credit: Jagdeep Rajput



RF600mm f/11 IS STM  
Photo Credit: Shivang Mehta





RF-S18-45mm f4.5-6.3 IS STM



RF-S18-150mm f3.5-6.3 IS STM





EF8-15mm f/4L Fisheye USM  
Photo Credit: Astro Mohan



EF24-70mm f/2.8L II USM  
Photo Credit: Astro Mohan



EF-S10-18mm f/4.5-5.6 IS STM  
Photo Credit: Tejas Soni



EF-M18-150mm f/3.5-6.3 IS STM  
Photo Credit: Ravi Dhingra


Canon India Pvt. Ltd.

Corporate Office: 7<sup>th</sup> Floor,  
Tower B, Building No. 5, DLF Epitome,  
DLF Phase III, Gurugram – 122002

For Canon Camera Service / Collection Centres details,  
Call: Numbers: 1860 180 3366 or 1800 208 3366  
Visit: <http://bit.ly/canonservicenetwork>

Canon Master Service Centres:  
Delhi, Kolkata, Mumbai, Bengaluru, Chennai and Kochi  
Canon Authorised Service Franchisee:  
Ahmedabad, Bhubaneswar, Chennai, Guwahati,  
Hyderabad, Indore, Ludhiana and Pune

For other details, visit: [in.canon](http://in.canon)

Follow Canon India on   

[@canonindia\\_official](https://www.instagram.com/canonindia_official) 



Dealer's Stamp

---

All images and effects are simulated. Actual images may vary. Models and specifications are subject to change without prior notification. Prices mentioned for all products are MRP (inclusive of all taxes). Errors and omissions excepted. Canon is a registered trademark of Canon Inc.