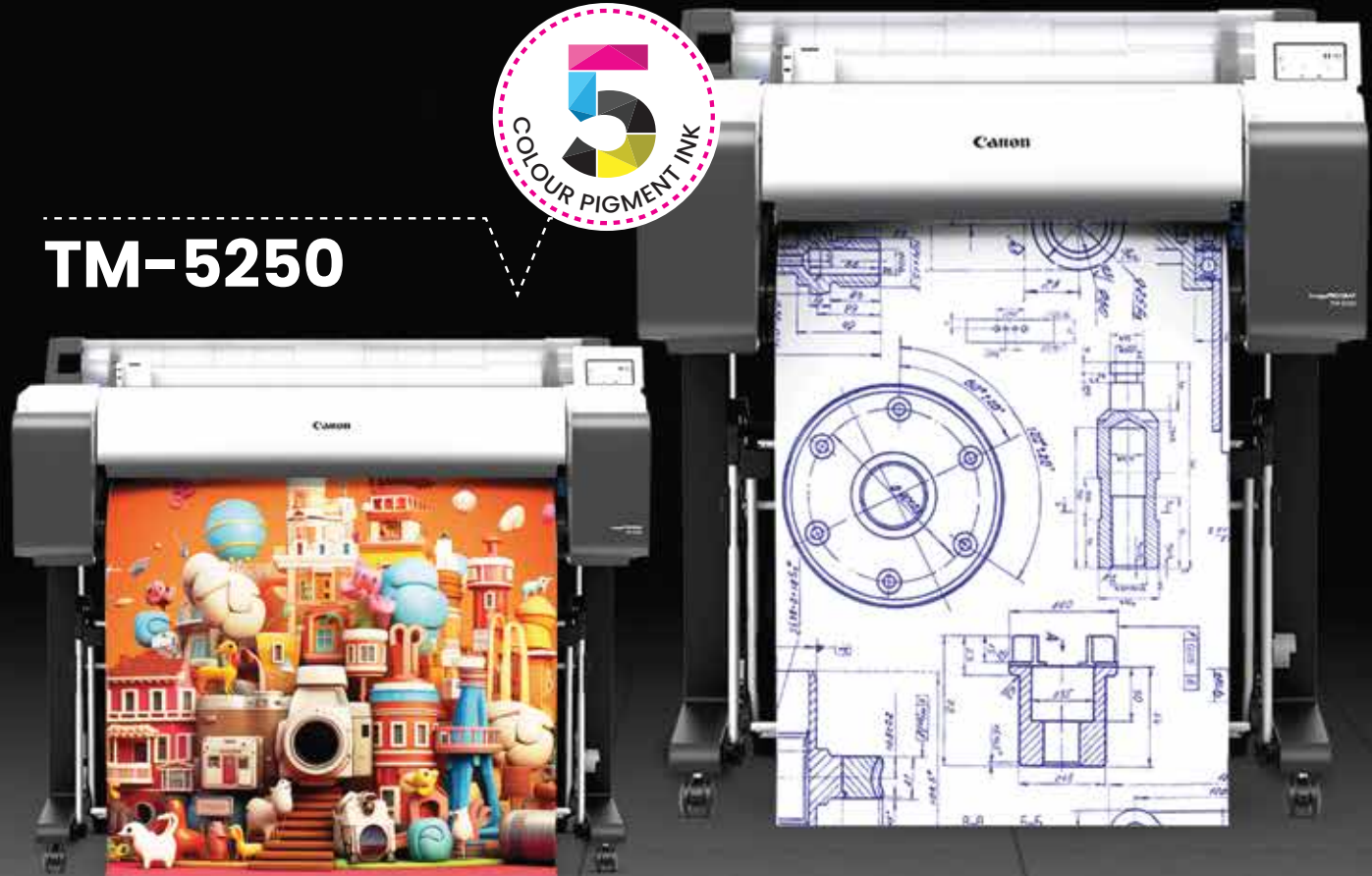


TM Series Go #FastandFlawless

TM-5350

TM-5250



CANON INDIA PVT. LTD.

7th Floor, Tower B, Building #5, DLF Epitome Building, DLF Phase III, Gurugram-122002
Ph: 0124-4160000 | Fax: 0124-4160011 | Web: in.canon

DEALER'S STAMP	This document is for information purposes only. The contents are subject to change without notice. Product options, name and availability may vary by regions. We expressly disclaim any liability or contractual obligations with respect to this document. Brands and product names are trademarks and/or registered trademarks of their respective owners.
-----------------------	---

Part Code : 9700W258

Canon India complies with the E-Waste (Management) Rules, 2022 and its amendments.

Please return end-of-life product for environmentally safe disposal. For details visit www.canon.co.in/recycle
This document is for information purpose only. The contents are subject to change without notice. Product options, name and availability may vary by regions. We expressly disclaim any liability or contractual obligations with respect to this document. Brands and products names are trademarks and/or registered trademarks of their respective owners.

Warnings: Unauthorized recording of copyrighted materials may infringe on the rights of copyright owners and be contrary to copyright laws.

E-Waste Rules:

Canon India complies with the E-Waste (Management) Rules, 2022 and its amendments. This product is in accordance with the rule 16 pertaining to the Reduction in the use of hazardous substances (ROHS).

Once this product reaches to end of life, this product should not be disposed of with your regular household waste.

For more information, please visit: <https://in.canon/en/consumer/web/e-waste> or write to us at cipl.ewaste@canon.co.in



SPECIFICATIONS

PRINTER		TM-5250	TM-5350
Printer Type		5-Colour, 609.6 mm (24 inch)	5-Colour, 914.4 mm (36 inch)
Number of Nozzles		15 360 nozzles (MBK 5/20 nozzles, Other Colours 2 560 nozzles each)	
Max. Print Resolution		2 400 x 1 200 dpi	
Nozzle Pitch		1 200 dpi x 2	
Line Accuracy ¹		± 0.1 % or less	
Ink Tank Size	Sales Ink	130 ml / 300 ml (MBK, BK, C, M, Y)	
	Bundle Starter Ink	130 ml (MBK) / 90 ml (BK, C, M, Y)	
Ink Type		Pigment Ink	
Print Languages		SG Raster (Swift Graphic Raster) HP-GL/2, HP RTL, JPEG (Ver. JFIF1.02) CALS G4 ² N/A	
Print Solutions & Applications		Printer Driver (Win/Mac versions), Direct Print Plus, Free Layout PLUS, PosterArtist Windows Web & Lite, Wi-Fi Connection Assistant, PIXMA Cloud Link, Apple AirPrint (Mobile), Canon PRINT Inkjet/SELPHY (Mobile), Canon Print System (Mobile), uniFLOW server	
Management Solutions		Media Configuration Tool (includes Color Customisation Tool), Accounting Manager, Device Management Console, Quick Utility Toolbox	
Interface (Built-in)	USB B Port	Hi-Speed USB, Full Speed (12 Mbit/s), Hi-Speed (480 Mbit/s), Bulk Transfer, Series B (4 pins)	
	USB A Port	N/A	
	Network	IEEE 802.3 10base-T IEEE 802.3u 100base-TX IEEE 802.3ab 1000base-T IEEE 802.3x Full Duplex SNMP, HTTP, TCP/IP (IPv4/IPv6), FTP	
	Wireless LAN	IEEE802.11 b/g/n WPA-PSK (TKIP/AES) WPA2-PSK (TKIP/AES) WPA3-SAE (AES) WPA-EAP (AES)->WPA2-EAP (AES)->WPA3-EAP (AES)->	
Memory Hard Disk		2 GB No Hard Disk	
Display		LCD (109.22 mm (4.3 inch)/10.9 cm TFT color)	
OS Compatibility	Please visit https://asia.canon to confirm OS compatibility and to download the latest drivers.	Windows, Macintosh	

MEDIA HANDLING		TM-5250	TM-5350
Media Width	Roll Paper	203.2 ~ 610 mm	203.2 ~ 917 mm
	Cut Sheet		
Media Thickness	Roll Paper/ Cut Sheet	0.07 ~ 0.8 mm	
Printable Media Length	Roll Paper	203.2 mm ~ 18 m ³	
	Cut Sheet	279.4 ~ 1 600 mm	
Media Core Size		50.8 mm (2 inch) / 76.2 mm (3 inch) core	
Outside Diameter Roll Paper		150 mm or less	
Media Feed	Roll Paper	1 Roll, Top Load, Front Output	
	Cut Sheet	Front Load, Front Output	
Delivery Direction		Face-up, Front side	
Margins (Top, Bottom, Side)	Recommended Area (Roll Paper)	20 mm, 3 mm, 3 mm	
	Recommended Area (Cut Sheet)	20 mm, 20 mm, 3 mm	
	Printable Area (Roll Paper)	3 mm, 3 mm, 3 mm	
	Printable Area (Roll Paper Borderless Print)	0 mm	
	Printable Area (Cut Sheet)	3 mm, 20 mm, 3 mm	

PRINT SPEED ⁴		TM-5250	TM-5350
Plain Paper	CAD Drawing (Fast Q5 mode)	20 s (A1 Portrait)	17 s (A1 Landscape)
	CAD Drawing (A0 Portrait, Fast Q5 mode)	NA	32 s
Heavyweight Coated Paper	Poster (A1 Portrait, Standard mode)	1 min 23 s	NA
	Poster (A0 Portrait, Standard mode)	NA	2 min 33 s

DIMENSIONS (WxDxH) & WEIGHT ⁵		TM-5250	TM-5350
Packaged Dimensions & Weight	Printer (Main unit + Pallet)	1 152 x 913 x 679 mm Weight: 73 kg	NA
	Printer (Main unit + Stand + Basket + Pallet) (SD-35)	NA	1 462 x 1 122 x 801 mm Weight: 113 kg
	Stand + Basket (SD-26)	1 058 x 826 x 270 mm Weight: 22 kg	NA
	Printer (Main unit with stand and pallet) (SD-26)	1 152 x 913 x 946 mm Weight: 96 kg	NA

Specifications are subject to change without notice.

¹ User adjustments required. Printing environment and media must match those used for the adjustments. Paper required: Plain paper and coated paper only. | ² USB Thumb drive printing is not supported.

³ IEEE802.1X (EAP-TLS/EAP-TTLS/PEAP) Supported. | ⁴ Time taken to print one page does not include time required for data processing, data transfer and pre-printing operations. | ⁵ Varies according to the OS and application. | ⁶ Include roll holder set. | ⁷ Acoustic Power and Pressure are measured using ISO 7719 standard.

DIMENSIONS (WxDxH) & WEIGHT ⁵		TM-5250	TM-5350
Printer & Weight	Printer	978 x 748 x 439 mm (Operation panel is not tilt up) Weight: 41.5 kg (Excluding print head and ink)	1 285 x 748 x 439 mm (Operation panel not tilted up) Weight: 49.5 kg (Excluding print head and ink)
	Printer with Stand + Basket (SD-26)	978 x 885 x 1 060 mm (Basket Opened) 982 x 756 x 1 060 mm (Basket Closed) Weight: 54.5 kg (Excluding print head and ink)	NA
	Printer with Stand + Basket (SD-35)	NA	1 285 x 885 x 1 060 mm (Operation panel not tilted up / Basket opened) 1 285 x 756 x 1 060 mm (Operation panel not tilted up / Basket closed) Weight: 63.8kg (Excluding print head and ink)
Scanner & Weight		935 x 253 x 131 mm Weight: 5.28 kg	1 238 x 253 x 131 mm Weight: 6.56 kg

POWER AND OPERATING REQUIREMENTS		TM-5250	TM-5350
Power Supply (Printer)		AC 100-240 V (50-60 Hz)	
Power Consumption (Printer)	Print Operation	Operation: < 62 W	< 65 W
	Sleep Mode	<1.6 W	
	Power OFF	< 0.1 W	
Recommended Environment	Temperature	Temperature: 15 ~ 30 °C	
	Humidity	10 ~ 80 % RH (no dew condensation)	
Acoustic	Power ⁷	Approx. 6.2 Bels	
	Pressure ⁷	Approx. 41 dB(A), Standby 35 dB(A) or less	

SCANNER		TM-5250	TM-5350
Scanner Model		lm24	lm36
Scan Width		609.6 mm (24 inch)	914.4 mm (36 inch)
Optical Resolution (DPI)		Up to 600 dpi	
Scan Format		TIFF, TIFF G4, PDF, PDF/A, JPEG Multipage PDF & JPEG	
Scan Destinations		USB2, max 128GB FAT32. Advice is to use factory USB2.0 and above FAT32 formatted memory sticks. Note that Windows limits FAT32 formatting at 32GB but can read and write data on larger volumes. A 3rd party application can be used to format larger volumes but not guaranteed.	
Scanner Software		ScanAPP	
Max. Copy Speed: mm (inch)/s		Colour Draft (300/300 dpi): 38.1 mm per sec (1.5 ips) Standard (300/600 dpi): 25.4 mm per sec (1 ips) Best (600/600 dpi): 12.7 mm per sec (0.5 ips)	
		Monochrome Draft (300/300 dpi): 114.3 mm per sec (4.5 ips) Standard (300/600 dpi): 76.2 mm per sec (3 ips) Best (600/600 dpi): 38.1 mm per sec (1.5 ips)	
Max. Scan Speed: mm (inch)/s		Colour Draft (200 dpi): 38.1 mm per sec (1.5 ips) Standard (300 dpi): 25.4 mm per sec (1 ips) Best (600 dpi): 12.7 mm per sec (0.5 ips)	
		Monochrome Draft (200 dpi): 114.3 mm per sec (4.5 ips) Standard (300 dpi): 76.2 mm per sec (3 ips) Best (600 dpi): 38.1 mm per sec (1.5 ips)	
Maximum Original Thickness & Length		Up to 0.8 mm	

OPTIONAL ACCESSORIES		TM-5250	TM-5350
Roll Unit		-	
2/3" Roll Holder		RH2-28	RH2-35
Printer Stand + Basket		SD-26	-
Card Reader Interface for uniFLOW		RA-02	

CONSUMABLES		TM-5250	TM-5350
Ink Tank		Magenta: PFI-8121 (330 ml) / PFI-8321 (300 ml) Matte Black / Black / Cyan / Yellow: PFI-8120 (130 ml) / PFI-8320 (300 ml)	
Print Head		PF-08	
Cutter Blade		CT-08	
Maintenance Cartridge		MC-31	

For Less Hassle, More Productivity

Swift and Productive Prints

The L-COA PRO II chip speeds data processing making it 30% faster than its predecessors with a speed of 3.2 pages/min (A1).



Smart Media Handling

Now easily detect the type, width and estimated length of the media with our smart media handling feature which is designed for convenience.



Flat Top Space & Fully Accessible

Flat top design helps in easy roll replacement or checking printing samples. Fully front accessible design allows the user to operate the machine from front without getting into the hassle of moving the machine.

Direct Print Plus

Print **PDF** or **JPEG** files in batches effortlessly with custom templates by using Direct Print Plus.



Seamless Connectivity

The printer can be connected via WiFi, USB and LAN.



For Prints as Vibrant as Your Imagination



Borderless Brilliance

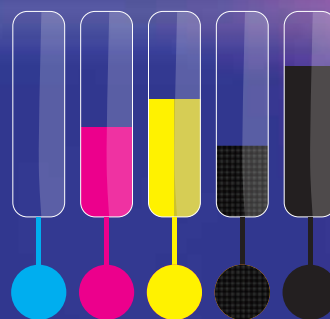
Borderless poster printing on any size of roll paper is now possible.

New magenta ink

For vivid, enhanced, life-like and remarkably RED prints.



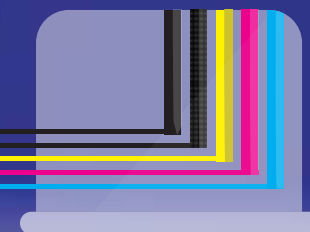
Main Ink Tanks



Hot Swap

Even if the ink tanks run out of ink, the printer continues to print using the ink available as reserve in sub-ink tanks. This allows the replacement of empty cartridges while printing is live.

Ink Box



Sub Ink Tanks

5-Color Pigment Ink

A spectrum of perfection at your fingertips, with our 5-color pigment ink delivering exceptional quality.



PosterArtist

The PosterArtist application offers effortless creation of vibrant and visually appealing posters.

Check it out at <https://posterartist.canon>



Efficiency Meets Eco-Friendliness

Scanning with Efficiency

The TM-5350 with the Lm36 scanner supports up to 0.8mm paper thickness and has new transparent guides; and displays the remaining amount of roll paper.



Copying at Your Fingertips

Convenience is key, and our copying capabilities put control directly in your hands.



Lower Power Consumption

Embrace sustainability with an energy efficient design that uses 30% less power without compromising performance.

