

Canon

Delighting You Always

PRINT LASTING IMPRESSIONS

imagePROGRAF
PRO-526 | PRO-546 | PRO-566



Quality That Stays

609.6mm
→ **24"**
PRO-526
Max. Print Width

1117.6mm
→ **44"**
PRO-546
Max. Print Width

1524mm
→ **60"**
PRO-566
Max. Print Width

AUTO
Media Detection

AUTO
Media Estimation

NEW
Deep Black Density

NEW
LUCIA
PRO II ink



NEW
Strong
Light Resistance

NEW
Strong
Scratch Resistance

Crystal-fidelity

500GB
Encrypted HDD

Connectivity

Dual Roll System
(OPTIONAL)

NEW
Interior
LED Lights

Auto
Media Loading

Prints That Leave a Lasting Impression

Enhance your prints with the new imagePROGRAF PRO Series. Ideal for photo studios, galleries, and photographers. these printers feature advanced **12-color pigment inks** ensuring your creations leave a lasting impression with vibrant timeless colours.

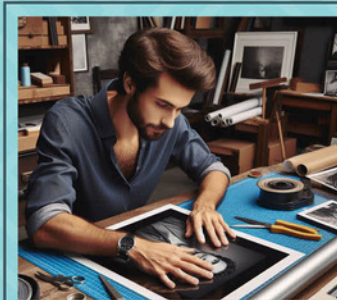
FEATURES



Smooth skin tones with Photo Cyan, Photo Magenta Cyan and Magenta.



Experience depth and clarity of black shades with Matte Black, Black, Grey, and Photo Grey.



Improved light and scratch resistance ensures no fading or degradation of photo prints.



Save more with our large-capacity ink tanks, designed to reduce running cost.



LUCIA PRO II ink

Bring your artworks to life with the LUCIA PRO II ink system, which offers **enhanced robustness** and **superior image quality** for all of your prints.



Photo Black



Matte Black



Cyan



Magenta



Yellow



Photo Cyan



Photo Magenta



Grey



Photo Grey



Red



Blue



Chroma Optimiser

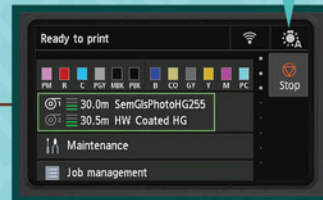
PRINTER DESIGN

MADE WITH CONVENIENCE IN MIND

Printing is effortless, thanks to the enhanced user experience offered by the printer's design.

INTERIOR LED LIGHT

Ink and media wastage caused by misprints is reduced thanks to the new interior LED lights.



PANEL USABILITY

Easily check on how much roll media is left with the printer's improved user interface within its panel.

LED LIGHT VISIBILITY

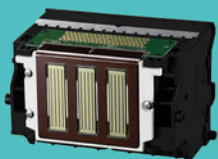
Greater LED light visibility is made possible thanks to the translucent material used for the ink tank's cover.

ADD ROLL MEDIA SIZE INDICATOR

The indicator allows you to check the size of your roll media effortlessly.

imagePROGRAF
PRO-526

ADDITIONAL FEATURES



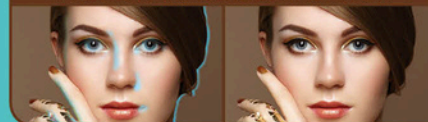
FINE PRINT HEAD

Possessing 18,432 nozzles for 12 colours due to the Full Photolithography Inkjet Nozzle Engineering (FINE) printhead, the printer effortlessly delivers quality results with finer details while offering greater durability for every printout.

AUTOMATED PRINthead MONITORING & ALIGNMENT

Spend less time adjusting printheads manually with the printer's automated alignment, which minimises ink and paper wastage caused by failed test prints. The newly developed ink-sensing system is able to prevent image degradation.

PREVENT IMAGE DEGRADATION



CRYSTAL-FIDELITY

Using an EOS camera and imagePROGRAF PRO Series together provides premium quality photo outputs through Canon's total technologies.



imagePROGRAF
PRO-546



imagePROGRAF
PRO-566

Finer Detail in Darker Areas

With improved black density thanks to the printer's new ink capabilities, darker areas in your images are more visible in printouts - allowing for greater expressions of your artwork or photos.

SOFTWARE APPLICATIONS

STREAMLINING YOUR PRINTING PROCESSES

Smoother your workflows with free-of-charge software applications provided by Canon that are designed to streamline common printing operations.



PROFESSIONAL PRINT & LAYOUT

Experience ease of printing with the use of Professional Print & Layout feature, which provides useful functions that assist in creating the ideal outputs for your printouts.



FREE LAYOUT PLUS

Drag & drop your files while resizing them to fit into paper layouts and lay them out freely in any size with the Free Layout Plus software. Images can also be nested alongside tiled effortlessly, and completed layouts can be previewed before being printed.



MEDIA CONFIGURATION TOOL

The Media Configuration Tool allows you to configure paper setups swiftly.



ACCOUNTING MANAGER

Easily monitor while managing print usage for multiple large format Canon printers or individual ones using the Accounting Manager feature.



BORDERLESS PRINTS

Enjoy versatile printing, thanks to borderless printing which allows your artworks to be printed on any size of roll paper.



POSTERARTIST WEB

The PosterArtist Web feature offers a multitude of design templates suited for designing beautiful posters and other types of media.

SPECIFICATIONS

TECHNOLOGY		PRO-526	PRO-546	PRO-566
Printer Type		12-Colour, 610mm (24in)	12-Colour, 1118mm (44in)	12-Colour, 1524mm (60in)
Number of Nozzles		18,432 nozzles (1536 nozzles x 12 colours)		
Max. Print Resolution		2,400 x 1,200dpi		
Nozzle Pitch		600dpi x 2		
Line Accuracy ¹		± 0.1%		
Min. Ink Droplet Size		Minimum 4 Picoliter per colour		
Ink Capacity	Sales Ink	160ml, 700ml		
	Bundle Starter Ink	160ml	330ml	
Ink Type		Pigment Inks - Photo Black, Matte Black, Cyan, Magenta, Yellow, Photo Cyan, Photo Magenta, Grey, Photo Grey, Red, Blue, Chroma Optimizer		
Printer Languages		SG Raster (Swift Graphic Raster), PDF (Ver. 1.7), JPEG (Ver. JFIF1.02)		
Print Solutions		Apple AirPrint, Direct Print Plus, Canon PRINT Inkjet/SELPHY, Free Layout Plus, PosterArtist, Professional Print & Layout		
Management Solutions		Media Configuration Tool, Accounting Manager, Device Management Console, Quick Utility Toolbox		
Interface	USB A Port	USB Memory (Direct Print)		
	USB B Port	Built in Hi-Speed USB Full Speed (12 Mbit/sec), Hi-Speed (480 Mbit/sec), Bulk Transfer Series B (4 pins)		
	Gigabit Ethernet	Built in IEEE802.3ab(1000 Base-T) IEEE802.3u (100 Base-TX) / IEEE802.3 (10 Base-T) SNMP (Canon-MIB), HTTP, TCP/IP (IPv4/IPv6), FTP		
	Wireless LAN	IEEE802.11n/IEEE802.11g/IEEE802.11b WPA-PSK (TKIP/AES) WPA2-PSK (TKIP/AES) WPA3-SAE (AES) WPA-EAP (AES) WPA2-EAP (AES) WPA3-EAP (AES) ²		
Standard Memory		3GB		
Hard Disk		500GB (Encrypted HDD)		
PRINT SPEED³				
Heavyweight Coated Paper HG (Posters/Photo) (Standard Mode)		1 min 38 s	2 min 49 s	
Glossy Photo Paper HG (Posters/Photo) (Standard Mode)		3 min 11 s	5 min 35 s	
MEDIA HANDLING				
Media Feed & Output Method	Roll Paper	One Roll, Upper-loading, Front Output		
	Added Roll Paper	One Roll, Front-loading, Front Output 1118mm (44in) and 610mm (24in) models: Optional, 1524mm (60in) model: Default		
	Cut Sheet	Upper-loading, Front Output ⁴		
Media Width	Roll Paper/Cut Sheet	152.4 - 610mm	152.4 - 1118mm	152.4 - 1524mm
Media Thickness	Roll Paper/Cut Sheet	0.07 - 0.8mm		
Min. Printable Length	Roll Paper	101.6mm ⁵		
	Cut Sheet	203.2mm		
Max. Printable Length	Roll Paper	18m ⁶		
	Cut Sheet	1.6m		
Max. Roll Outer Diameter		170mm or less		
Media Core Size		Internal diameter of roll core: 16.93mm (2/3in)		
Borderless Printing	Roll Paper	0mm, 0mm, 0mm		
Margins (Top, Bottom, Side)	Rec. Area (Roll Paper)	20mm, 3mm, 3mm		
	Rec. Area (Cut Sheet)	20mm, 20mm, 3mm		
	Printable Area (Roll Paper)	3mm, 3mm, 3mm		
	Printable Area (Cut Sheet)	3mm, 12.7mm, 3mm		
Media Take-up Roll Unit		Dual directions rolling take-up		
Delivery Directions		Face-up, Front Side		

DIMENSIONS & WEIGHT ⁷		PRO-526	PRO-546	PRO-566
Packaged Dimensions (W x D x H) Weight	Main Unit + Pallet	1324 x 912 x 1139mm 138kg	1820 x 915 x 1042mm 185kg	2227 x 915 x 1025mm 222kg
	Stand + Basket	1174 x 827 x 223mm 27kg	-	-
	Main Unit + Stand + Basket + Pallet	1324 x 912 x 1139mm 157kg	-	-
	Roll Unit	1244 x 562 x 461mm 26kg	1727 x 562 x 461mm 33kg	2133 x 562 x 461mm 42kg
Dimensions (W x D x H) Weight	Main Unit	1110 x 734 x 628mm Approx. 85kg	1593 x 734 x 628mm Approx. 106kg	1999 x 734 x 628mm Approx. 124kg
	Main Unit + Stand + Basket	1110 x 984 x 1168mm (Basket Opened) 1110 x 766 x 1168mm (Basket Closed) Approx. 102kg	1593 x 984 x 1168mm (Basket Opened) 1593 x 766 x 1168mm (Basket Closed) Approx. 124kg	1999 x 984 x 1168mm (Basket Opened) 1999 x 766 x 1168mm (Basket Closed) Approx. 171kg
POWER & OPERATING REQUIREMENTS				
Power Supply		AC 100-240V, 50-60Hz		
Power Consumption	Operation ⁸	Approx. 85W		
	Sleep Mode ⁸	Approx. 1.7W		
	Power OFF	Approx. 0.1W		
Rec. Environment	Temperature	Temperature: 15-30°C		
	Humidity	Humidity: 10-80% RH (no dew condensation)		
Acoustic Sound	Acoustic Power ⁹	Operation: Approx. 6.4 Bels	Operation: Approx. 6.5 Bels	Operation: Approx. 6.6 Bels
	Acoustic Pressure ⁹	Operation: Approx. 46dB(A) Standby: 35dB(A) or less	Operation: Approx. 48dB(A) Standby: 35dB(A) or less	
ACCESSORIES				
Printer Stand + Basket		SD-21 (Optional)	Included	
Roll Unit (Optional)		RU-23	RU-43	RU-63 (Mandatory)
2/3" Roll Holder		RH2-29	RH2-46	RH2-66
CONSUMABLES				
Ink Tank		PFI-3810 (160ml) / PFI-3870 (700ml) For Matte Black (MBK): PFI-810 (160ml) / PFI-870 (700ml)		
Print Head		PF-10		
Cutter		CT-07		
Maintenance Cartridge		MC-30		

Design and specifications are subject to change without notice.

¹ User adjustments necessary. Printing environment and media must match those used for the adjustments. CAD paper required: Plain paper, CAD tracing paper, coated paper, CAD translucent matte film only.

² Support IEEE802.1X (EAP-TLS/EAP-TTLS/PEAP).

³ Time taken to print one page does not include time required for data processing, data transfer and pre-printing operations.

⁴ For cut sheet, manual feed using media locking lever.

⁵ Minimum printable length for Cloth and Canvas media is 200mm.

⁶ Varies according to the operating system and application.

⁷ Include roll holder set, exclude ink and print head.

⁸ Using wired LAN.

⁹ Measured using ISO 7779 standard by using 610mm (24in) / 1118mm (44in) / 1524mm (60in) Standard Photo Glossy Paper HG, standard mode.



imagePROGRAF PRO-526

imagePROGRAF PRO-546

imagePROGRAF PRO-566



CANON INDIA PVT. LTD.

7th Floor, Tower B, Building #5, DLF Epitome Building, DLF Phase III, Gurugram -122002
Ph.: 0124-4160000 | Fax: 0124-4160011 | Web: in.canon

Part Code: 9700W255

DEALER'S STAMP

This document is for information purposes only. The contents are subject to change without notice. Product options, name and availability may vary by regions. We expressly disclaim any liability or contractual obligations with respect to this document. Brands and product names are trademarks and/or registered trademarks of their respective owners.

© Canon India Pvt. Ltd. 2023. All rights reserved.



Canon India Complies with E-Waste (Management) Rules, 2016

Please return end-of-life product for environmentally safe disposal. For details visit www.canon.co.in/recycle

This document is for information purpose only. The contents are subject to change without notice. Product options, name and availability may vary by regions. We expressly disclaim any liability or contractual obligations with respect to this document. Brands and products names are trademarks and/or registered trademarks of their respective owners.

Warnings: Unauthorized recording of copyrighted materials may infringe on the rights of copyright owners and be contrary to copyright laws.

E-Waste Rules:

Canon India complies with the E-Waste (Management) Rules, 2022 and its amendments. This product is in accordance with the rule 16 pertaining to the Reduction in the use of hazardous substances (ROHS).

Once this product reaches to end of life, this product should not be disposed of with your regular household waste.

For more information, please visit: <https://in.canon/en/consumer/web/e-waste> or write to us at cipl.e-waste@canon.co.in

